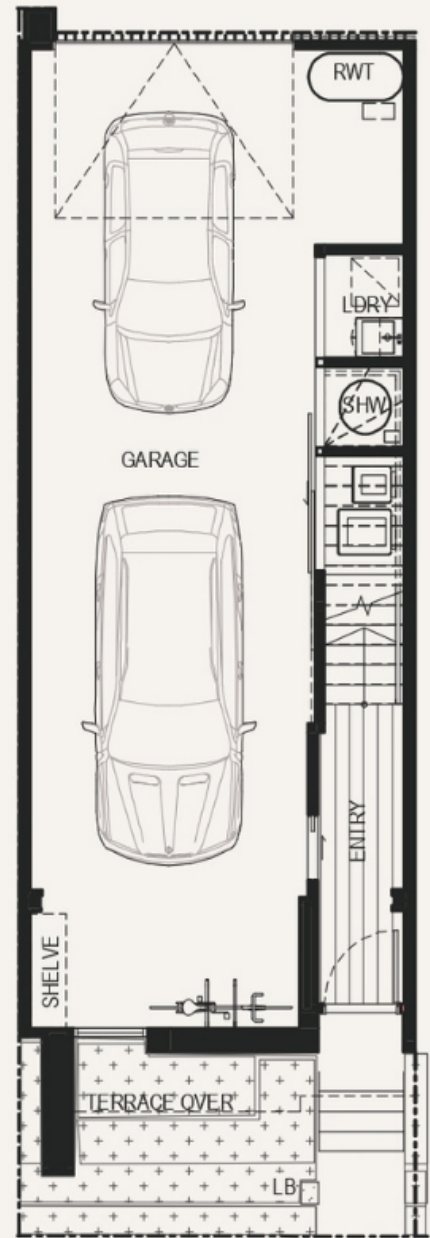
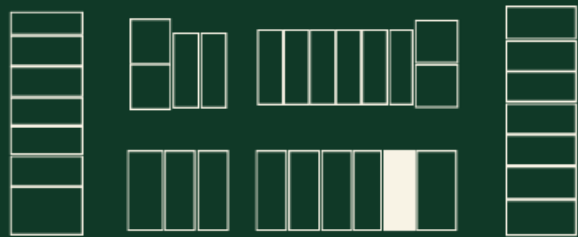


# Yarra Park

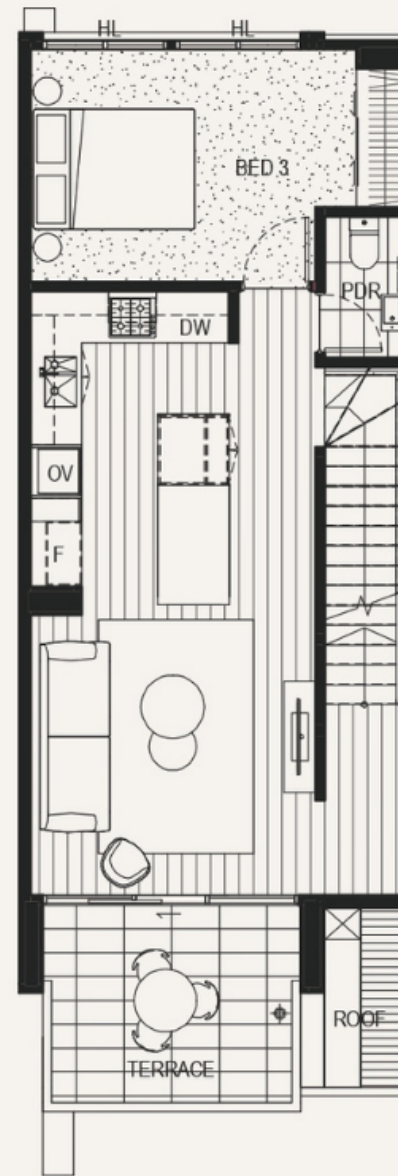
## Lot 21

### AREA

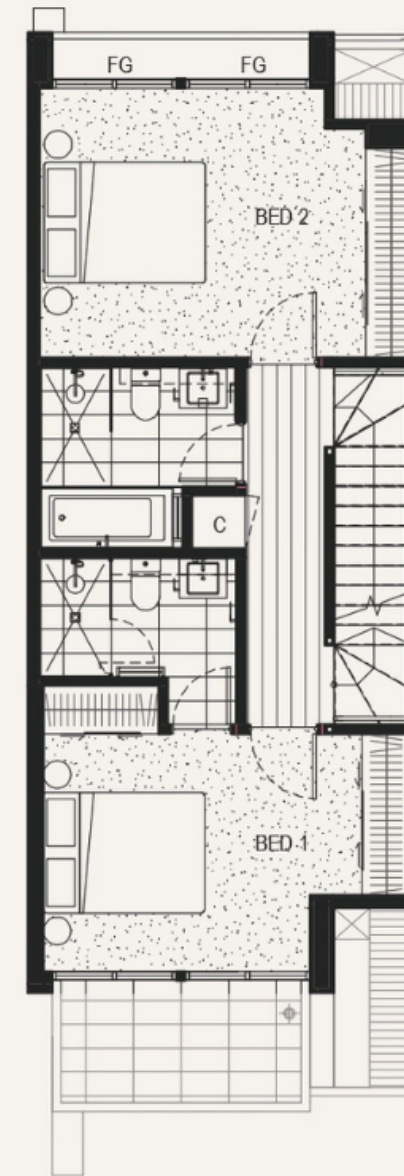
Ground Level	75.7m <sup>2</sup> (including 2 car spaces)
Level One	64m <sup>2</sup> (including 54.9m <sup>2</sup> internal)
Level Two	55.6m <sup>2</sup> (including 55.6m <sup>2</sup> internal)
Level Three	34.5m <sup>2</sup> (including 23.7m <sup>2</sup> internal)
<b>Total</b>	<b>229.8m<sup>2</sup></b>



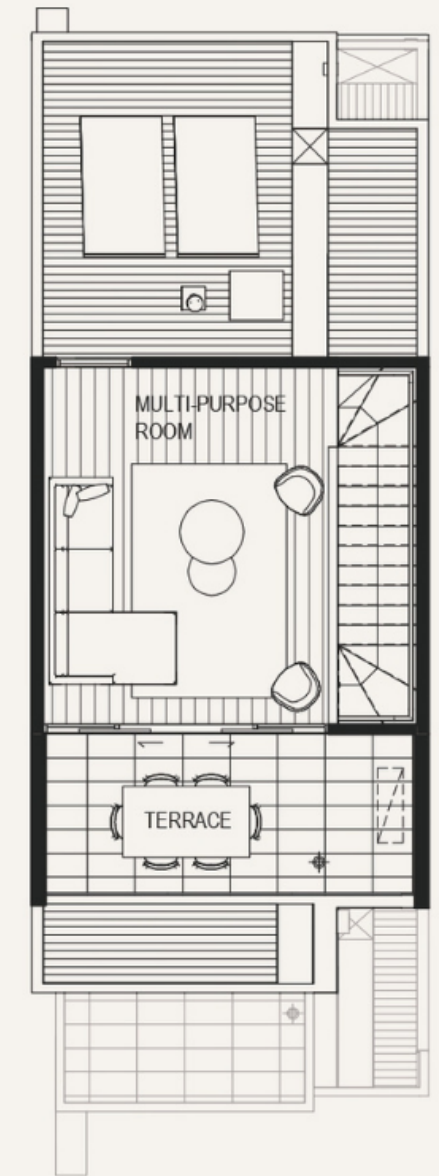
GROUND LEVEL



LEVEL ONE



LEVEL TWO



LEVEL THREE

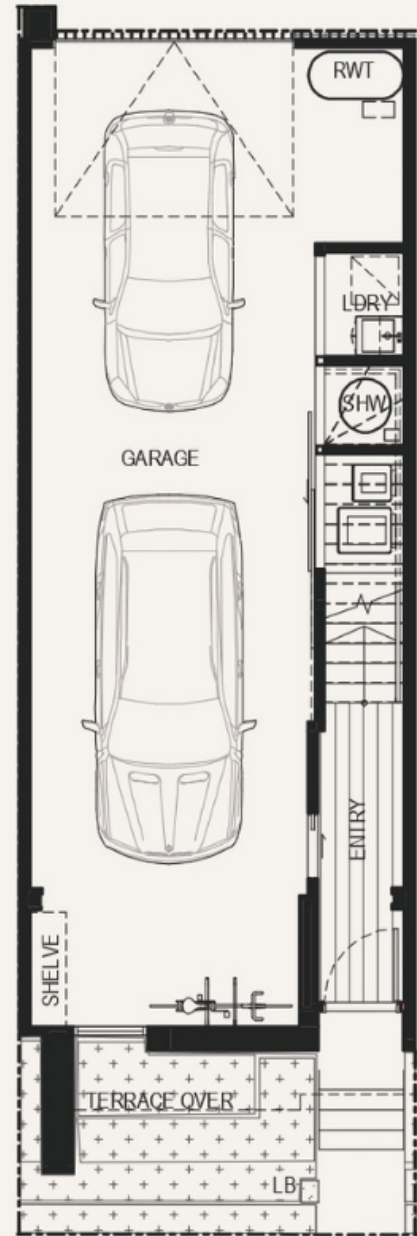
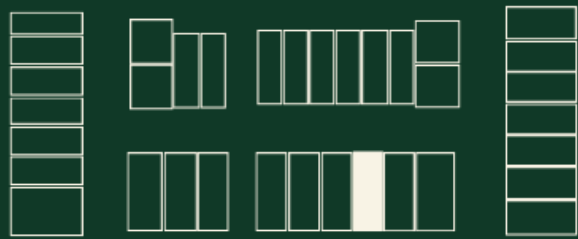


# Yarra Park

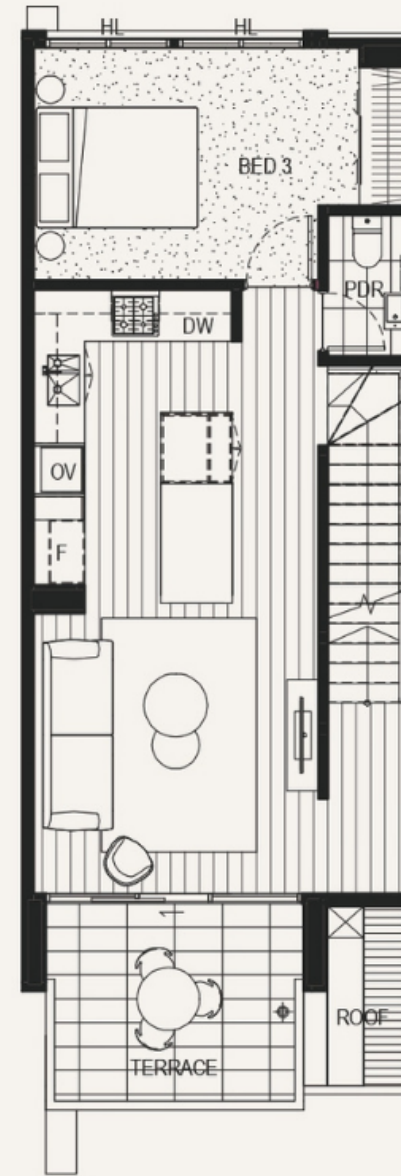
## Lot 22

### AREA

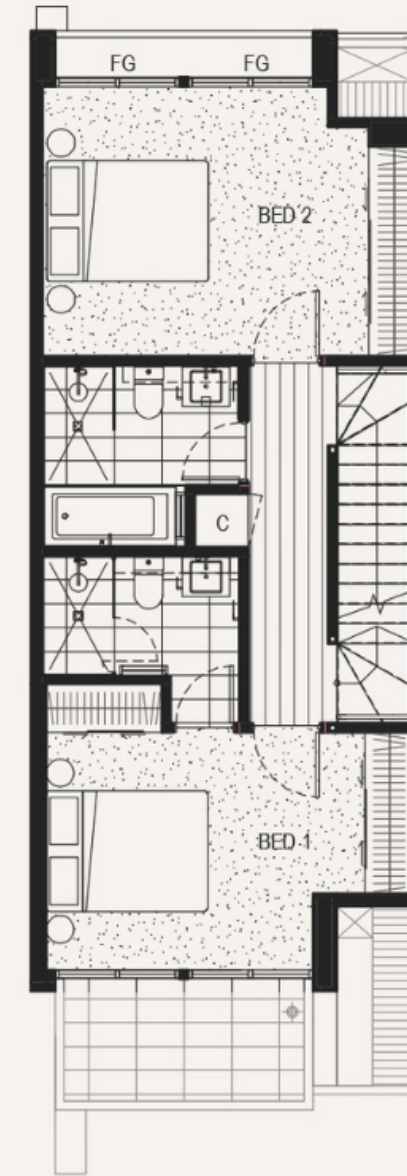
Ground Level	75.7m <sup>2</sup> (including 2 car spaces)
Level One	64m <sup>2</sup> (including 54.9m <sup>2</sup> internal)
Level Two	55.6m <sup>2</sup> (including 55.6m <sup>2</sup> internal)
Level Three	34.5m <sup>2</sup> (including 23.7m <sup>2</sup> internal)
<b>Total</b>	<b>229.8m<sup>2</sup></b>



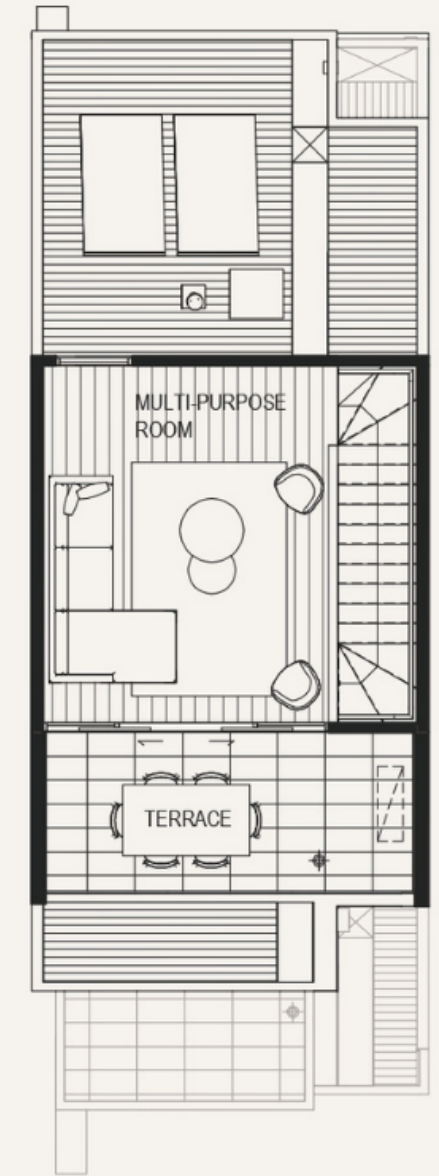
GROUND LEVEL



LEVEL ONE



LEVEL TWO



LEVEL THREE

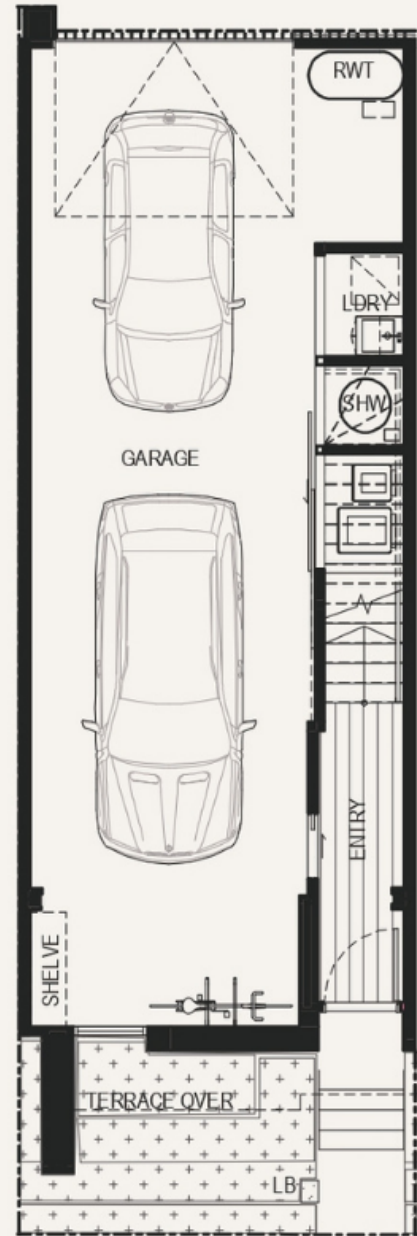
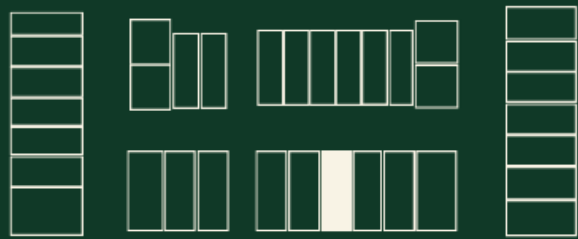


# Yarra Park

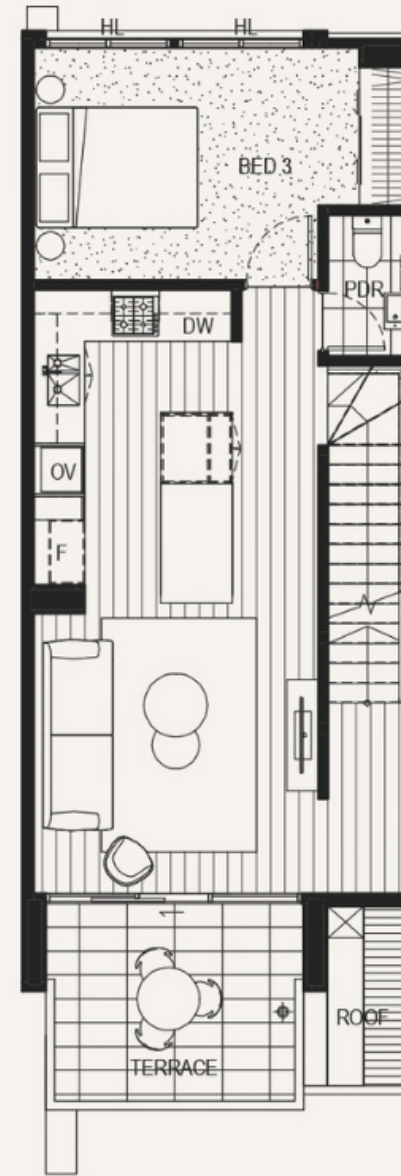
## Lot 23

### AREA

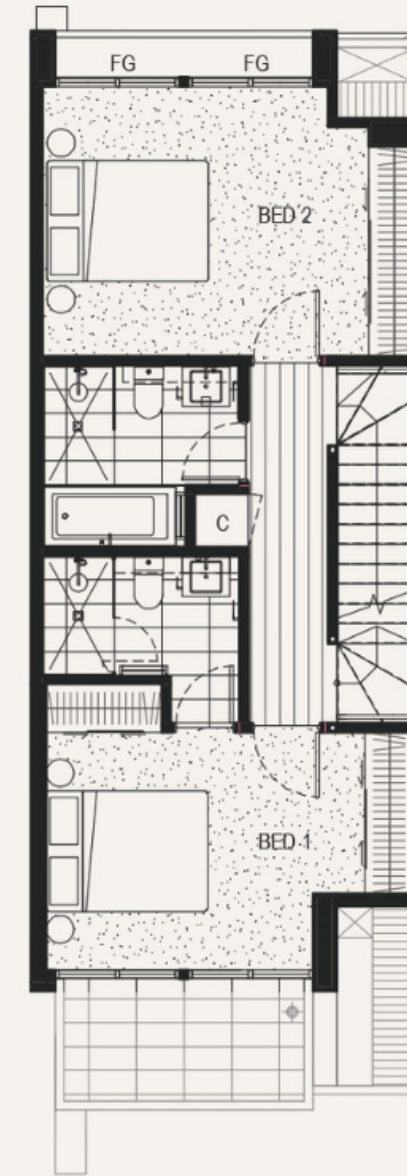
Ground Level	75.7m <sup>2</sup> (including 2 car spaces)
Level One	64m <sup>2</sup> (including 54.9m <sup>2</sup> internal)
Level Two	55.6m <sup>2</sup> (including 55.6m <sup>2</sup> internal)
Level Three	34.5m <sup>2</sup> (including 23.7m <sup>2</sup> internal)
<b>Total</b>	<b>229.8m<sup>2</sup></b>



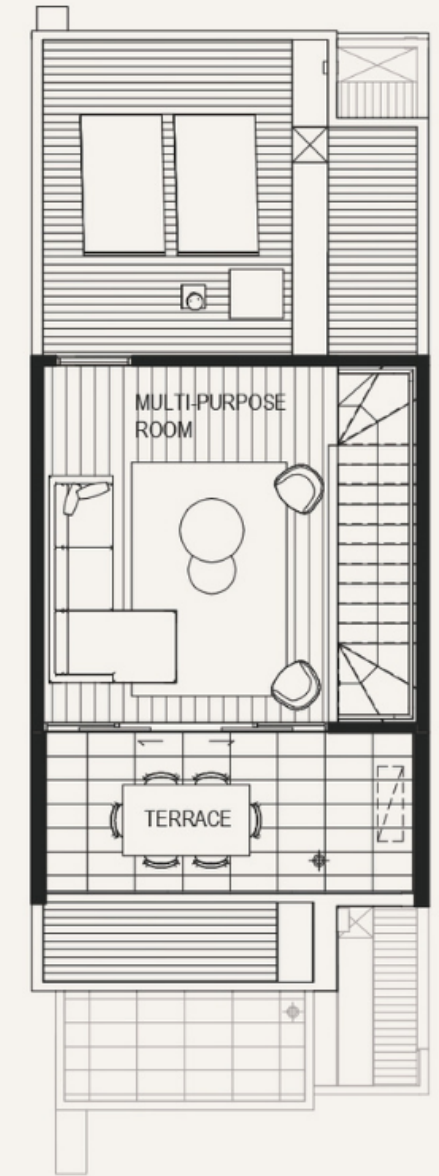
GROUND LEVEL



LEVEL ONE



LEVEL TWO



LEVEL THREE

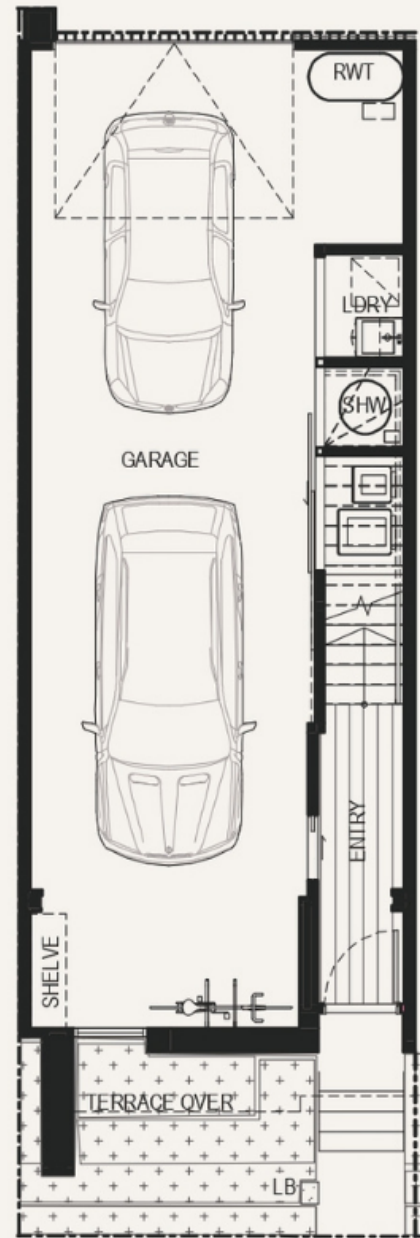
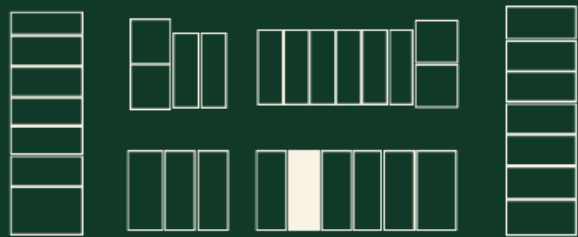


# Yarra Park

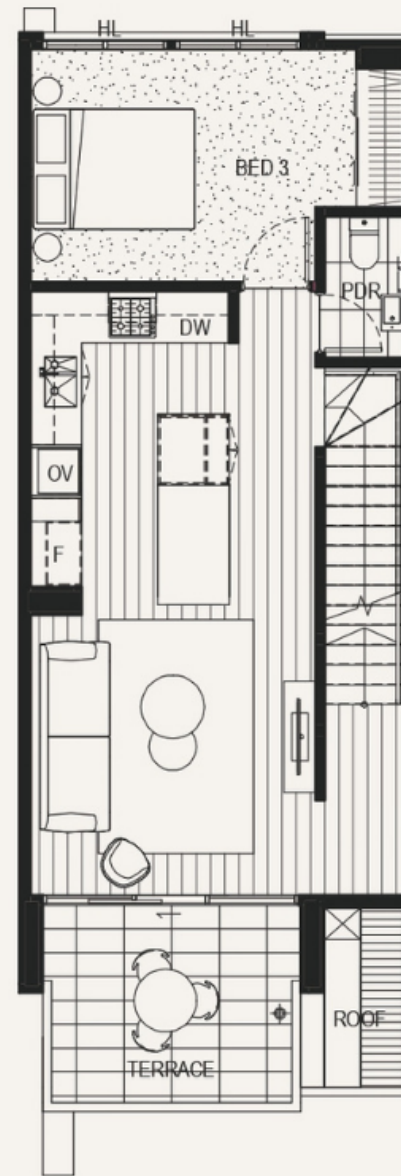
## Lot 24

### AREA

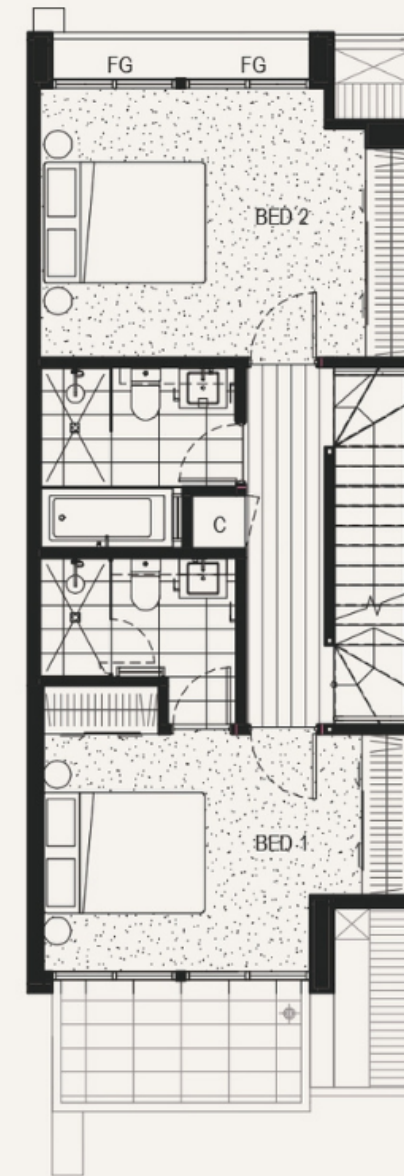
Ground Level	75.7m <sup>2</sup> (including 2 car spaces)
Level One	64m <sup>2</sup> (including 54.9m <sup>2</sup> internal)
Level Two	55.6m <sup>2</sup> (including 55.6m <sup>2</sup> internal)
Level Three	34.5m <sup>2</sup> (including 23.7m <sup>2</sup> internal)
<b>Total</b>	<b>229.8m<sup>2</sup></b>



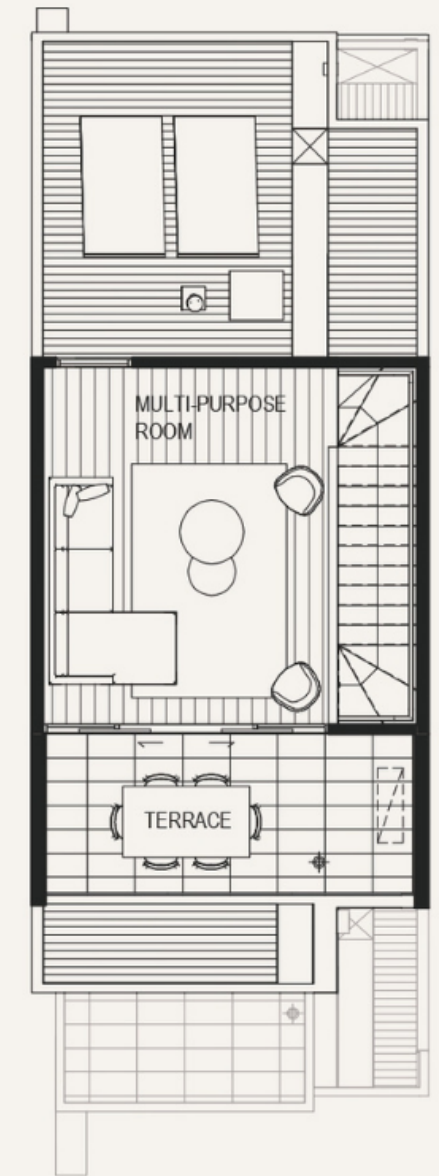
GROUND LEVEL



LEVEL ONE



LEVEL TWO



LEVEL THREE



# Yarra Park

## Lot 57

### AREA

Ground Level 67.5m<sup>2</sup>  
(including 2 car spaces)

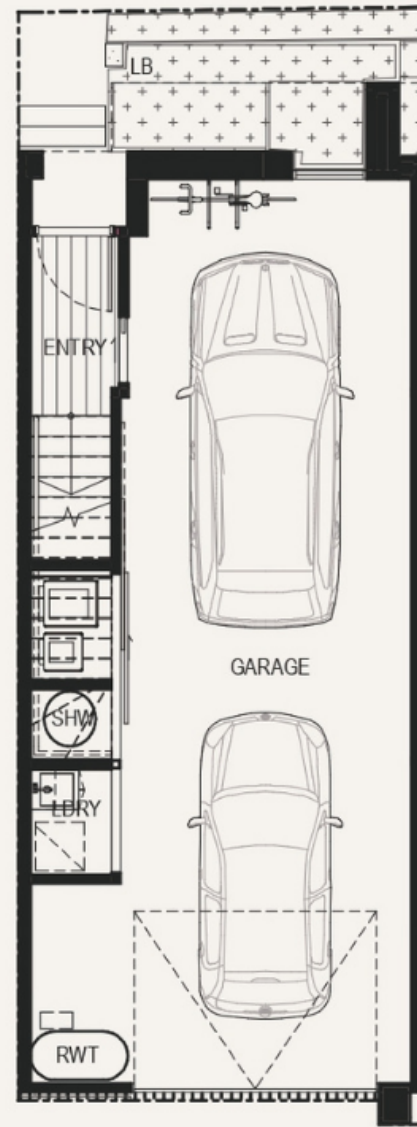
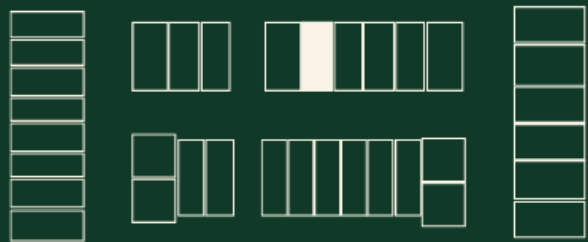
Level One 61.5m<sup>2</sup>  
(including 52.2m<sup>2</sup> internal)

Level Two 58.4m<sup>2</sup>  
(including 58.4m<sup>2</sup> internal)

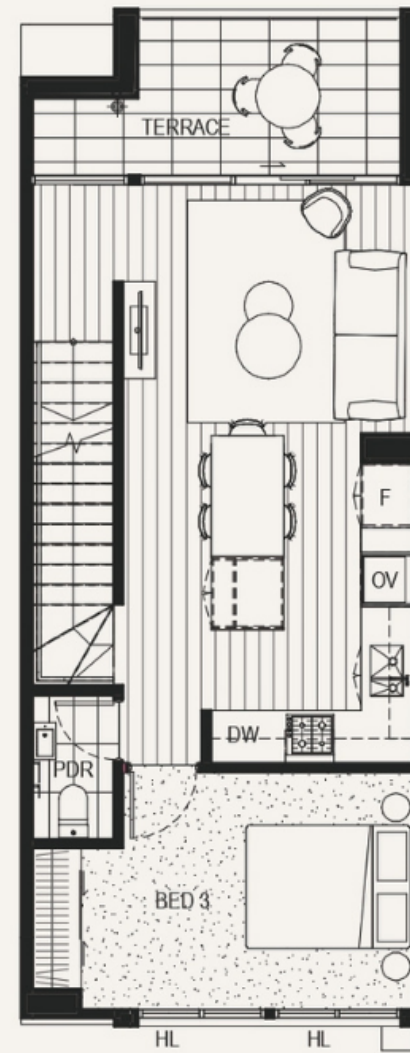
Level Three 34.6m<sup>2</sup>  
(including 23.8m<sup>2</sup> internal)

---

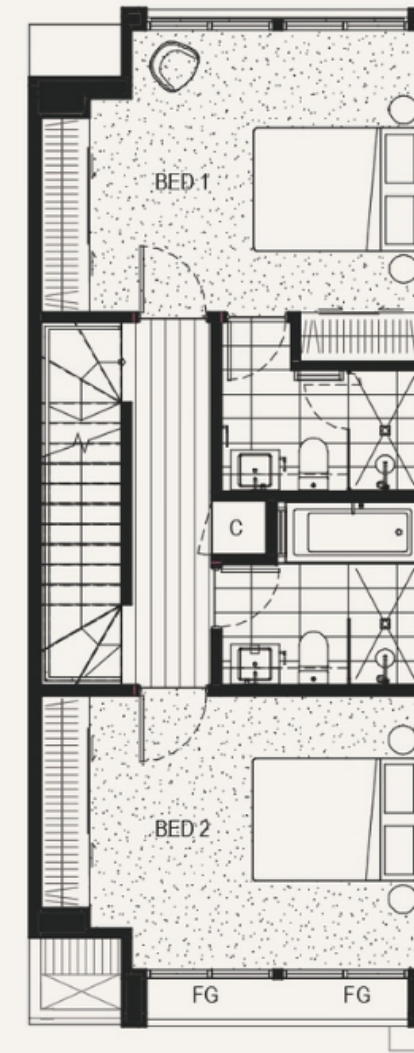
Total 222m<sup>2</sup>



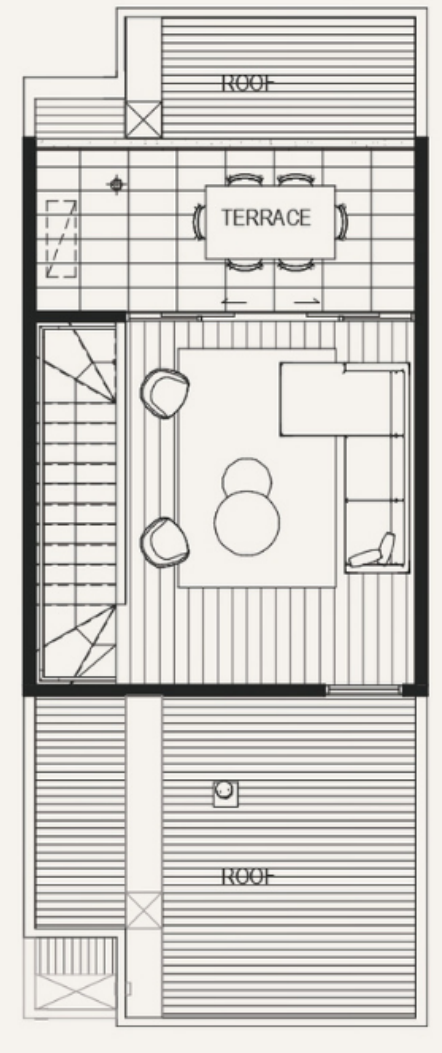
GROUND LEVEL



LEVEL ONE



LEVEL TWO



LEVEL THREE



# Yarra Park

## Lot 58

### AREA

Ground Level 67.5m<sup>2</sup>  
(including 2 car spaces)

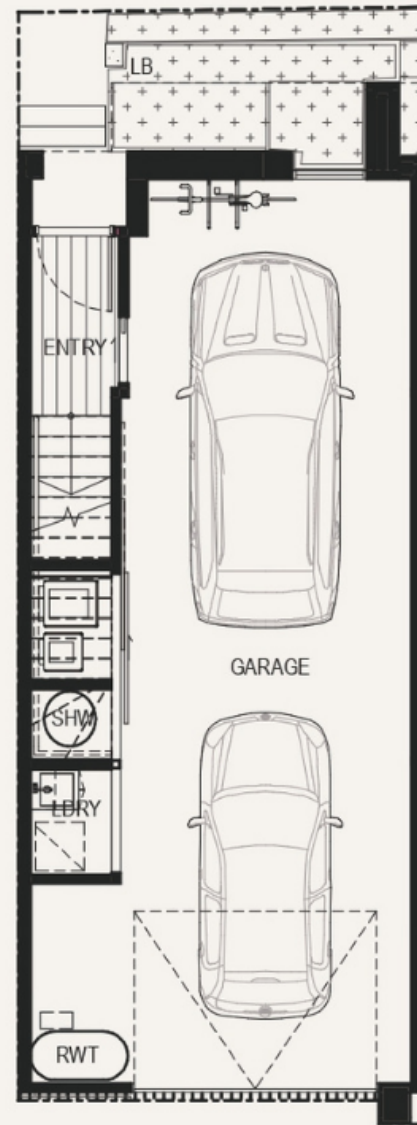
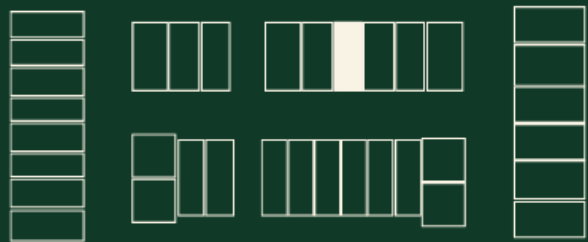
Level One 61.5m<sup>2</sup>  
(including 52.2m<sup>2</sup> internal)

Level Two 58.4m<sup>2</sup>  
(including 58.4m<sup>2</sup> internal)

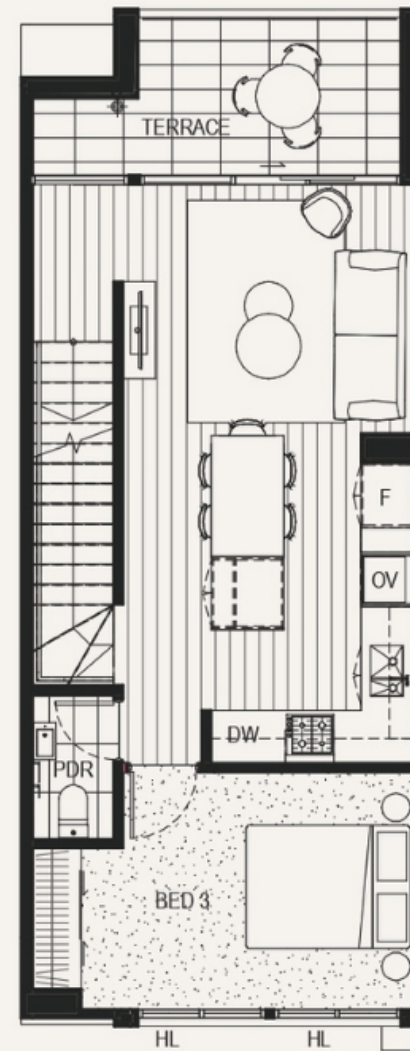
Level Three 34.6m<sup>2</sup>  
(including 23.8m<sup>2</sup> internal)

---

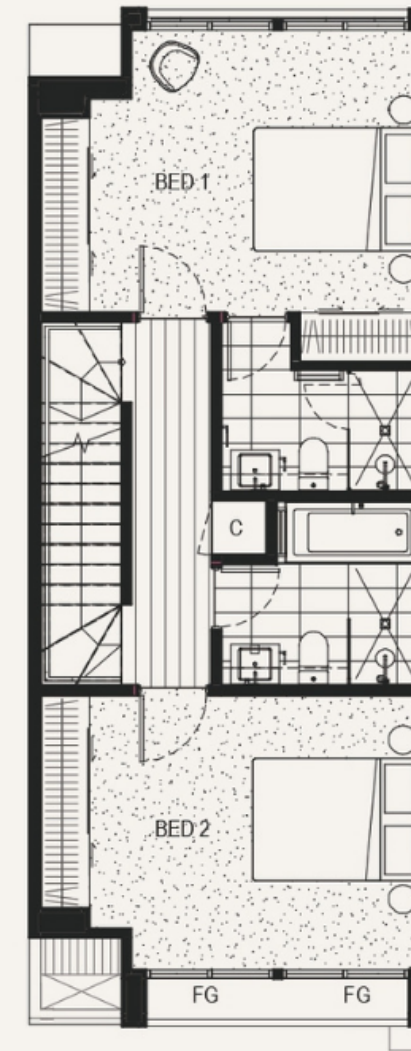
Total 222m<sup>2</sup>



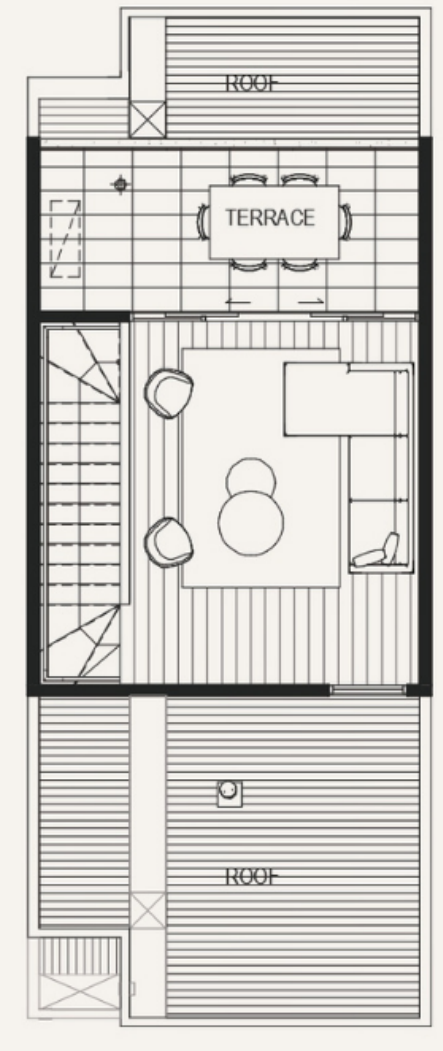
GROUND LEVEL



LEVEL ONE



LEVEL TWO



LEVEL THREE

ARIS

This floor plan was produced prior to construction and while the information contained herein is believed to be correct it is not guaranteed. Changes will undoubtedly be made in accordance with the contract for sale. The plan does not show additional features such as hot water systems, services or Bulkheads necessary for services. Dimensions, areas and scale of floor plans are approximate only. Areas calculated in accordance with the Property Council of Australia Method of Measurement. The furniture and furnishings depicted are not included with any sale. Purchasers must refer to the contract for sale for the list of inclusions. Furnishings should not be taken to indicate the final position of power points, TV connection points and the like. All graphics, including design and extent of tile/paver/carpet areas, landscaping, balustrades, louvres, sun shading devised, fencing, privacy screens, services equipment and wintergardens are for illustrative purposes only and are not to be relied on as a representative of the final product.



# Yarra Park

## Lot 59

### AREA

Ground Level 67.5m<sup>2</sup>  
(including 2 car spaces)

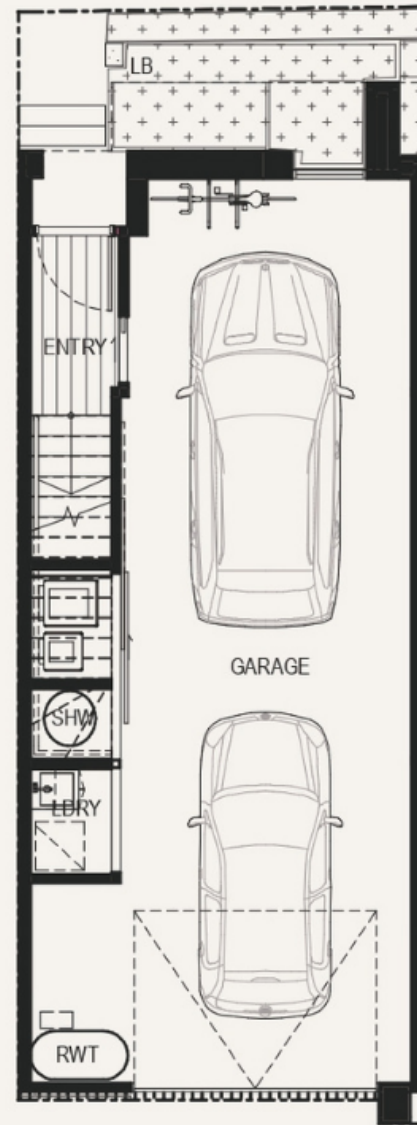
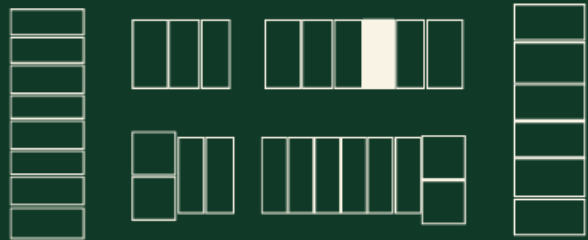
Level One 61.5m<sup>2</sup>  
(including 52.2m<sup>2</sup> internal)

Level Two 58.4m<sup>2</sup>  
(including 58.4m<sup>2</sup> internal)

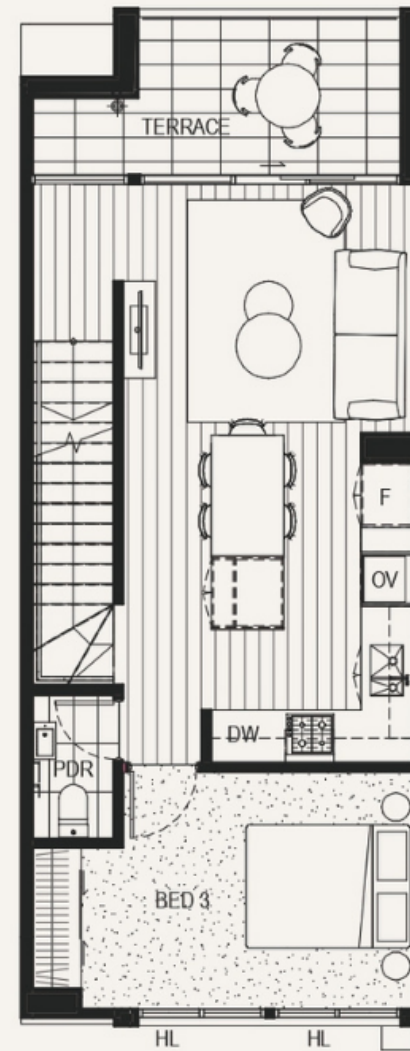
Level Three 34.6m<sup>2</sup>  
(including 23.8m<sup>2</sup> internal)

---

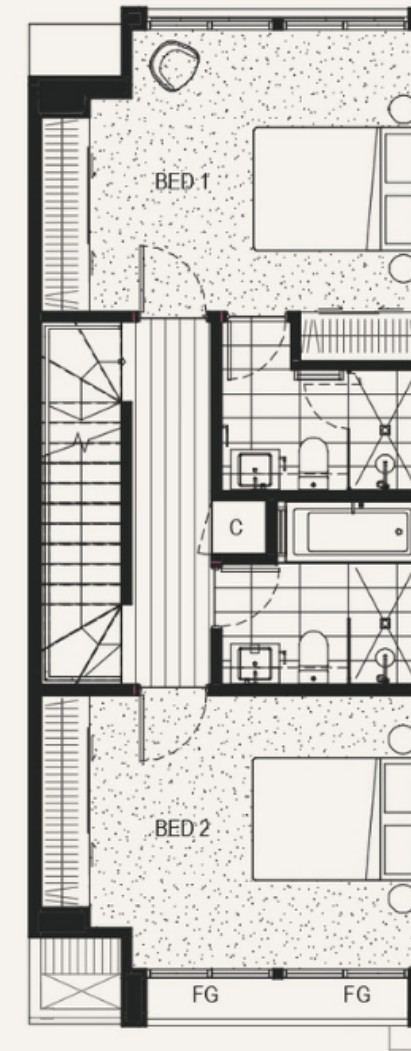
Total 222m<sup>2</sup>



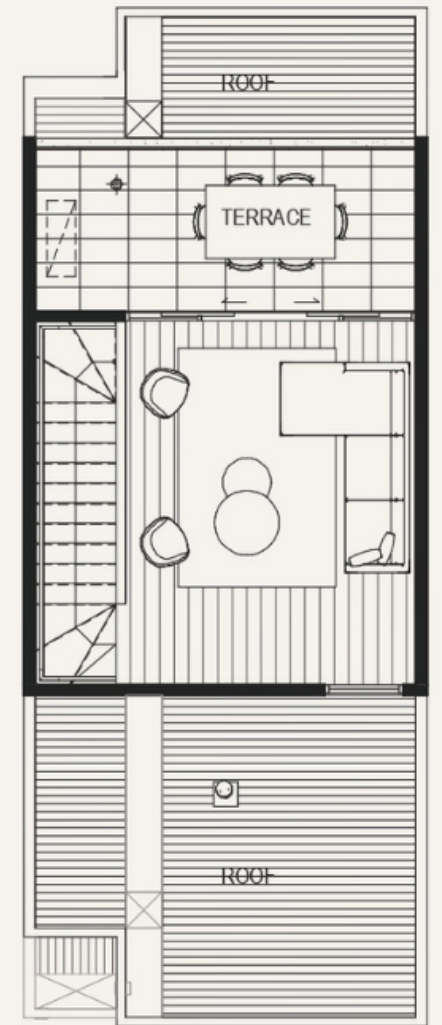
GROUND LEVEL



LEVEL ONE



LEVEL TWO



LEVEL THREE



# Yarra Park

## Lot 60

### AREA

Ground Level 67.5m<sup>2</sup>  
(including 2 car spaces)

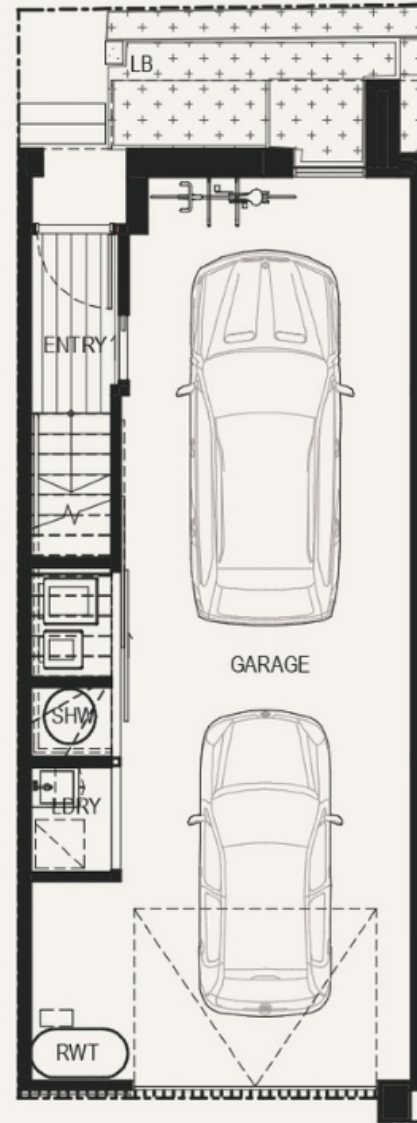
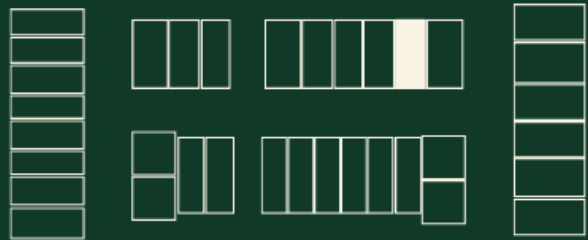
Level One 61.5m<sup>2</sup>  
(including 52.2m<sup>2</sup> internal)

Level Two 58.4m<sup>2</sup>  
(including 58.4m<sup>2</sup> internal)

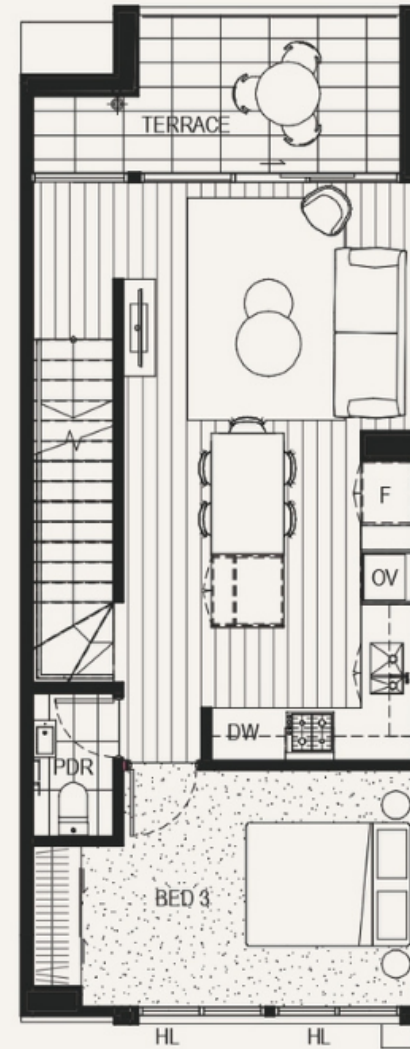
Level Three 34.6m<sup>2</sup>  
(including 23.8m<sup>2</sup> internal)

---

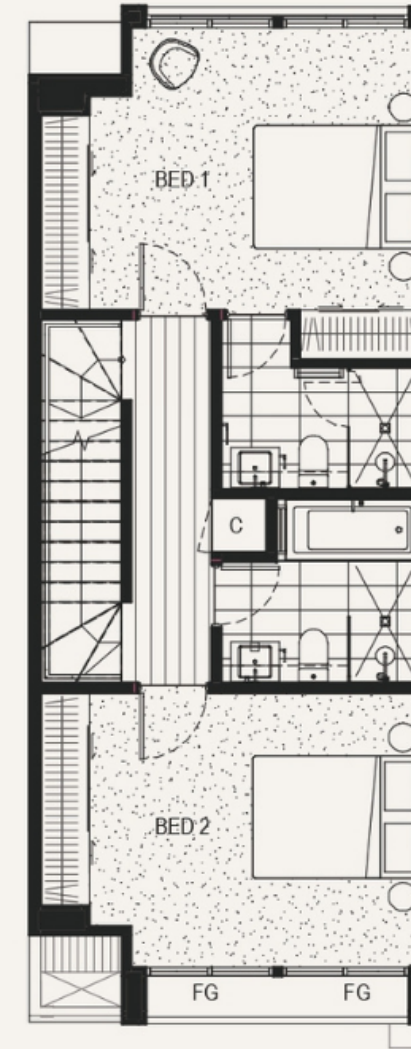
Total 222m<sup>2</sup>



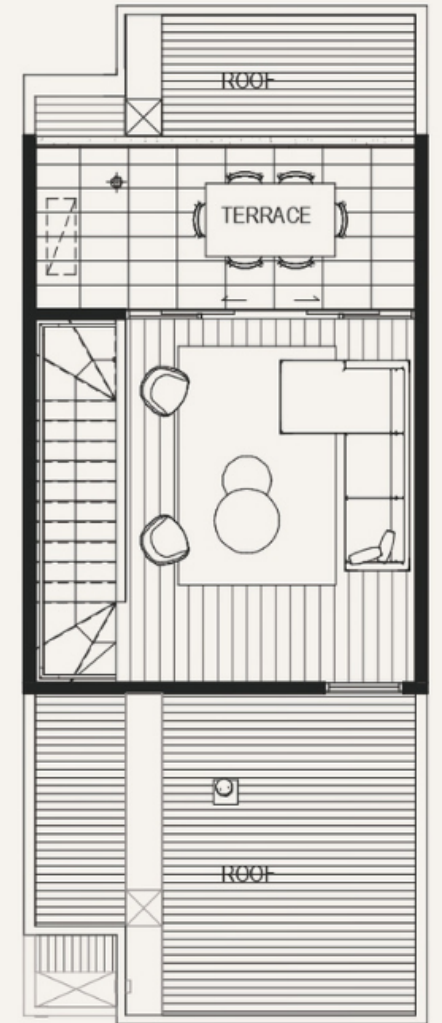
GROUND LEVEL



LEVEL ONE



LEVEL TWO



LEVEL THREE

