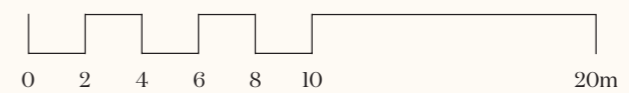


V&A
VICTORIA RESIDENCES

THE VICTORIA CLUB

LEVEL 4

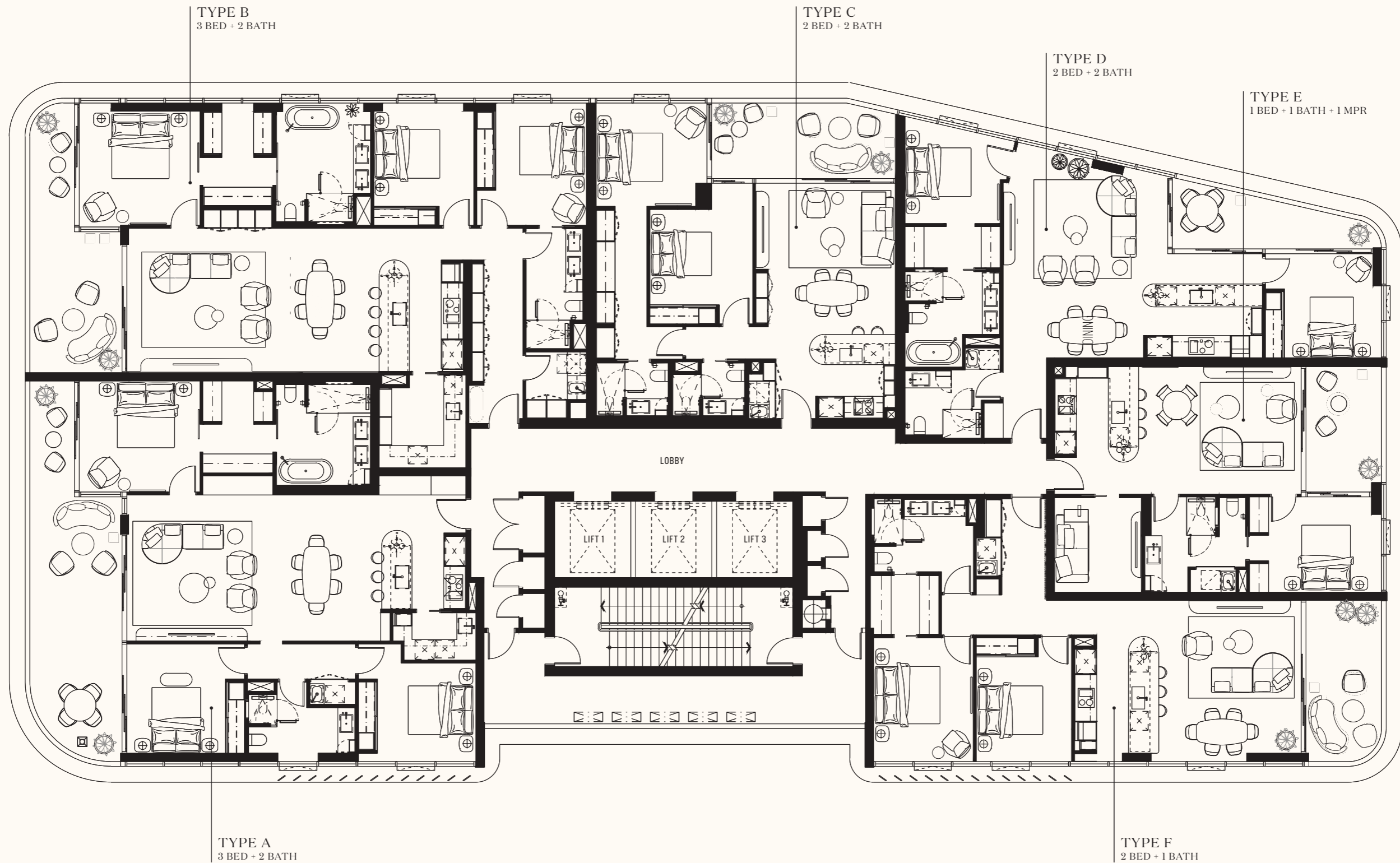


These plans are intended as a guide only. The measurements, dimensions and areas are approximate only and may not accurately represent the actual measurements, dimensions and areas of the apartments or the space within them are subject to change without notice. In addition, location of utilities may vary during construction and fitting, fixtures and chattels are shown on these plans are for illustrative purposes only. These plans (including anything referred to in the plans) do not form part of the contract of sale and no warranty is provided in respect of the contents of the plans. Prospective purchases must rely on their own enquiries and should refer to the contract of sale and its schedules for all matters to be included in the purchase price of the apartment, including any finishes, fixtures, fittings, appliances and other particulars of sale. Whilst every effort is made to provide accurate and complete information to purchases, the developer does not warrant or represent that the information in this floor plan is free from errors or omissions or is suitable for purchases' intended use. Subject to any terms implied by law which cannot be excluded, the developer accepts no responsibility for any loss, damage, cost or expense (whether direct or indirect) by purchases as a result of any error, omission or misrepresentation in information.

VICTORIA & ALBERT
BROADBEACH

iris DBI

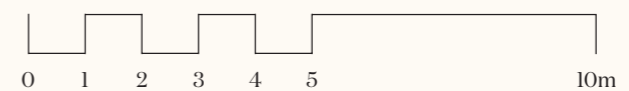
Colliers



V&A
VICTORIA RESIDENCES

THE
IRIS
COLLECTION

LEVELS 5—47

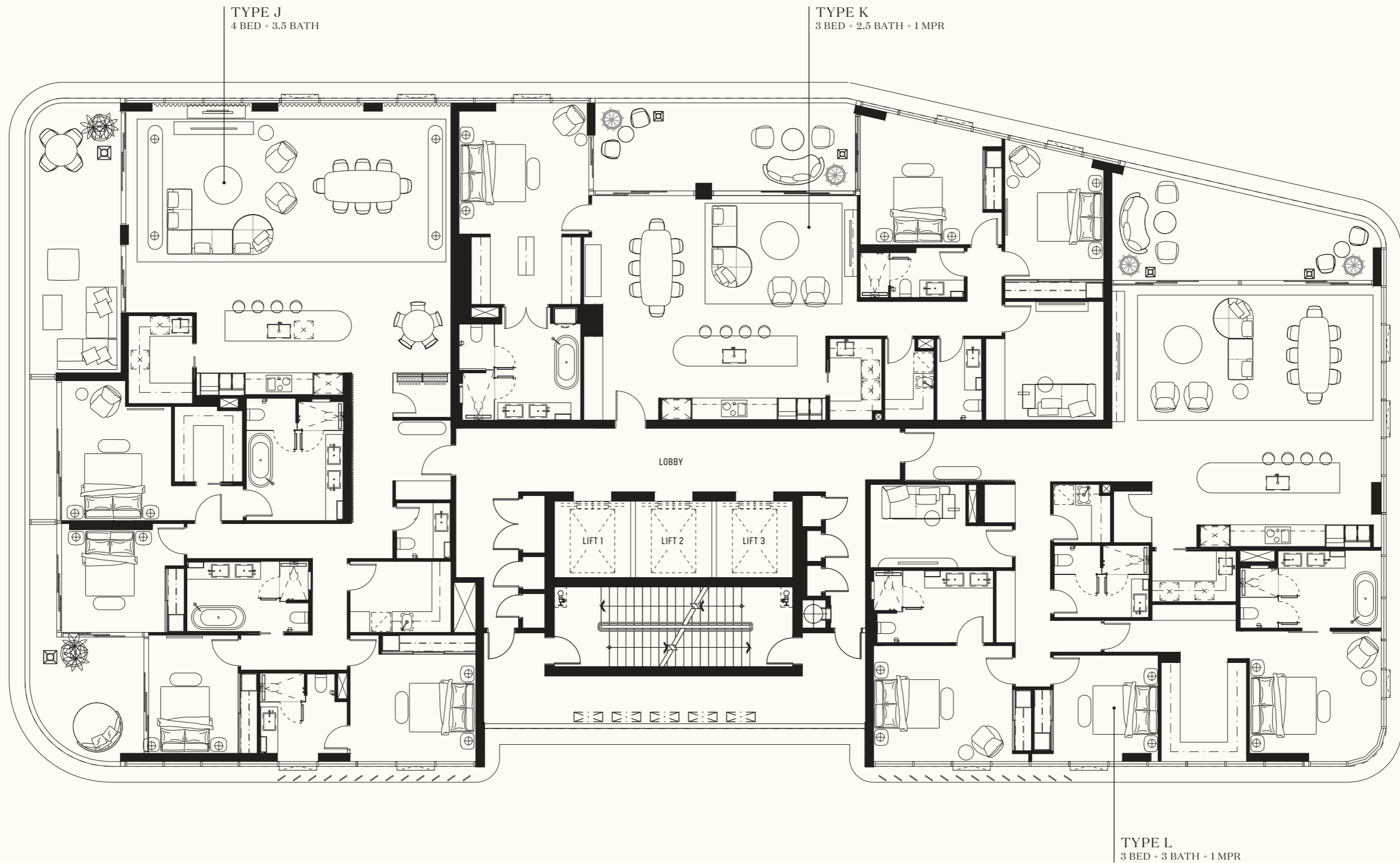


These plans are intended as a guide only. The measurements, dimensions and areas are approximate only and may not accurately represent the actual measurements, dimensions and areas of the apartments or the space within them are subject to change without notice. In addition, location of utilities may vary during construction and fitting, fixtures and chattels are shown on these plans are for illustrative purposes only. These plans (including anything referred to in the plans) do not form part of the contract of sale and no warranty is provided in respect of the contents of the plans. Prospective purchases must rely on their own enquiries and should refer to the contract of sale and its schedules for all matters to be included in the purchase price of the apartment, including any finishes, fixtures, fittings, appliances and other particulars of sale. Whilst every effort is made to provide accurate and complete information to purchases, the developer does not warrant or represent that the information in this floor plan is free from errors or omissions or is suitable for purchases' intended use. Subject to any terms implied by law which cannot be excluded, the developer accepts no responsibility for any loss, damage, cost or expense (whether direct or indirect) by purchases as a result of any error, omission or misrepresentation in information.

VICTORIA & ALBERT
BROADBEACH

iris DBI

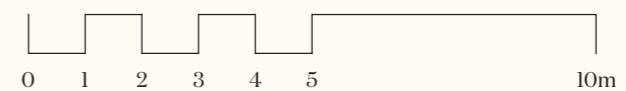
Colliers



V&A
VICTORIA RESIDENCES

THE
SKYHOMES
COLLECTION

LEVELS 48–53

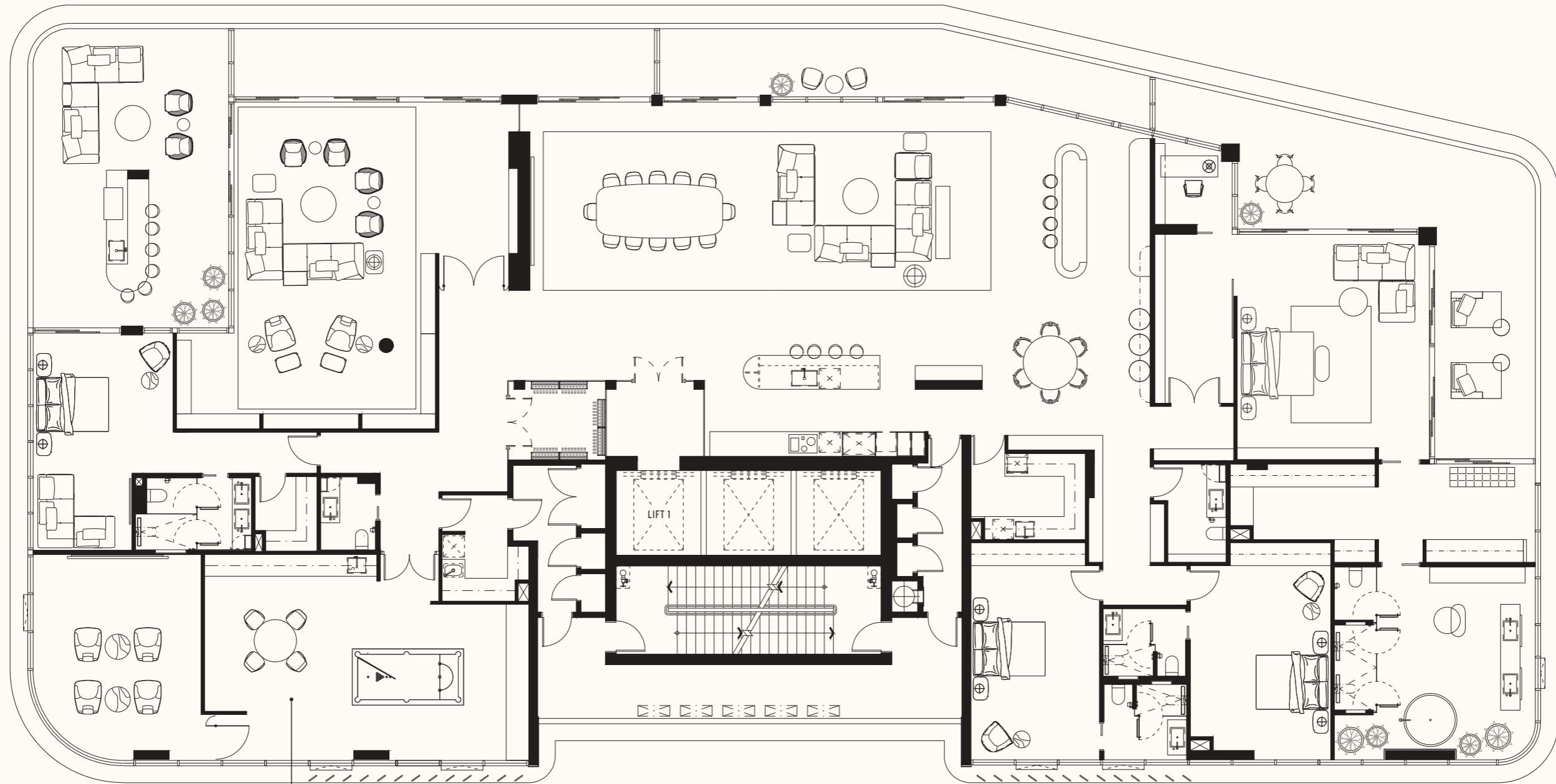


These plans are intended as a guide only. The measurements, dimensions and areas are approximate only and may not accurately represent the actual measurements, dimensions and areas of the apartments or the space within them are subject to change without notice. In addition, location of utilities may vary during construction and fitting, fixtures and chattels are shown on these plans are for illustrative purposes only. These plans (including anything referred to in the plans) do not form part of the contract of sale and no warranty is provided in respect of the contents of the plans. Prospective purchasers must rely on their own enquiries and should refer to the contract of sale and its schedules for all matters to be included in the purchase price of the apartment, including any finishes, fixtures, fittings, appliances and other particulars of sale. Whilst every effort is made to provide accurate and complete information to purchasers, the developer does not warrant or represent that the information in this floor plan is free from errors or omissions or is suitable for purchases' intended use. Subject to any terms implied by law which cannot be excluded, the developer accepts no responsibility for any loss, damage, cost or expense (whether direct or indirect) by purchases as a result of any error, omission or misrepresentation in information.

VICTORIA & ALBERT
BROADBEACH

iris **DBI**

Colliers

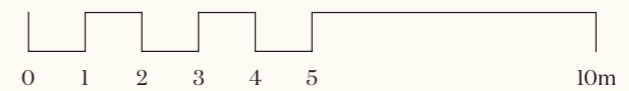


OCEANIA & SANDPIPER
 PENTHOUSE
 4 BED + 4 BATH + 2 PWDR

V&A
 VICTORIA RESIDENCES

THE
PENTHOUSE
 COLLECTION

LEVELS 54—55

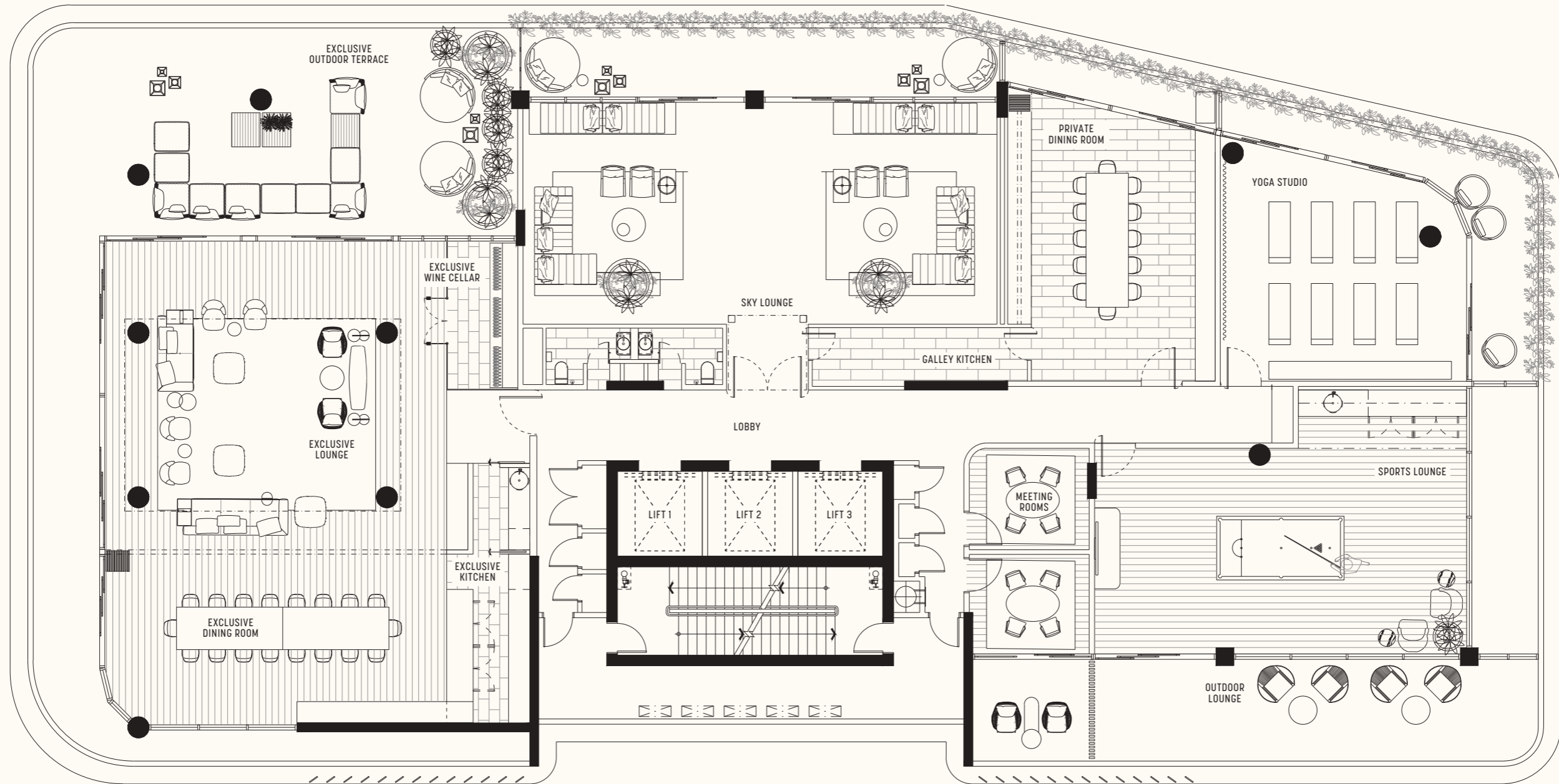


These plans are intended as a guide only. The measurements, dimensions and areas are approximate only and may not accurately represent the actual measurements, dimensions and areas of the apartments or the space within them are subject to change without notice. In addition, location of utilities may vary during construction and fitting, fixtures and chattels are shown on these plans are for illustrative purposes only. These plans (including anything referred to in the plans) do not form part of the contract of sale and no warranty is provided in respect of the contents of the plans. Prospective purchases must rely on their own enquiries and should refer to the contract of sale and its schedules for all matters to be included in the purchase price of the apartment, including any finishes, fixtures, fittings, appliances and other particulars of sale. Whilst every effort is made to provide accurate and complete information to purchases, the developer does not warrant or represent that the information in this floor plan is free from errors or omissions or is suitable for purchases' intended use. Subject to any terms implied by law which cannot be excluded, the developer accepts no responsibility for any loss, damage, cost or expense (whether direct or indirect) by purchases as a result of any error, omission or misrepresentation in information.

VICTORIA & ALBERT
 BROADBEACH

iris **DBI**

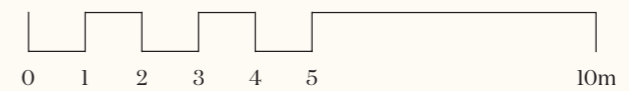
Colliers



V&A
VICTORIA RESIDENCES

VICTORIA
SKY LOUNGE

LEVEL 56



These plans are intended as a guide only. The measurements, dimensions and areas are approximate only and may not accurately represent the actual measurements, dimensions and areas of the apartments or the space within them are subject to change without notice. In addition, location of utilities may vary during construction and fitting, fixtures and chattels are shown on these plans are for illustrative purposes only. These plans (including anything referred to in the plans) do not form part of the contract of sale and no warranty is provided in respect of the contents of the plans. Prospective purchases must rely on their own enquiries and should refer to the contract of sale and its schedules for all matters to be included in the purchase price of the apartment, including any finishes, fixtures, fittings, appliances and other particulars of sale. Whilst every effort is made to provide accurate and complete information to purchases, the developer does not warrant or represent that the information in this floor plan is free from errors or omissions or is suitable for purchases' intended use. Subject to any terms implied by law which cannot be excluded, the developer accepts no responsibility for any loss, damage, cost or expense (whether direct or indirect) by purchases as a result of any error, omission or misrepresentation in information.

VICTORIA & ALBERT
BROADBEACH

iris DBI

Colliers