

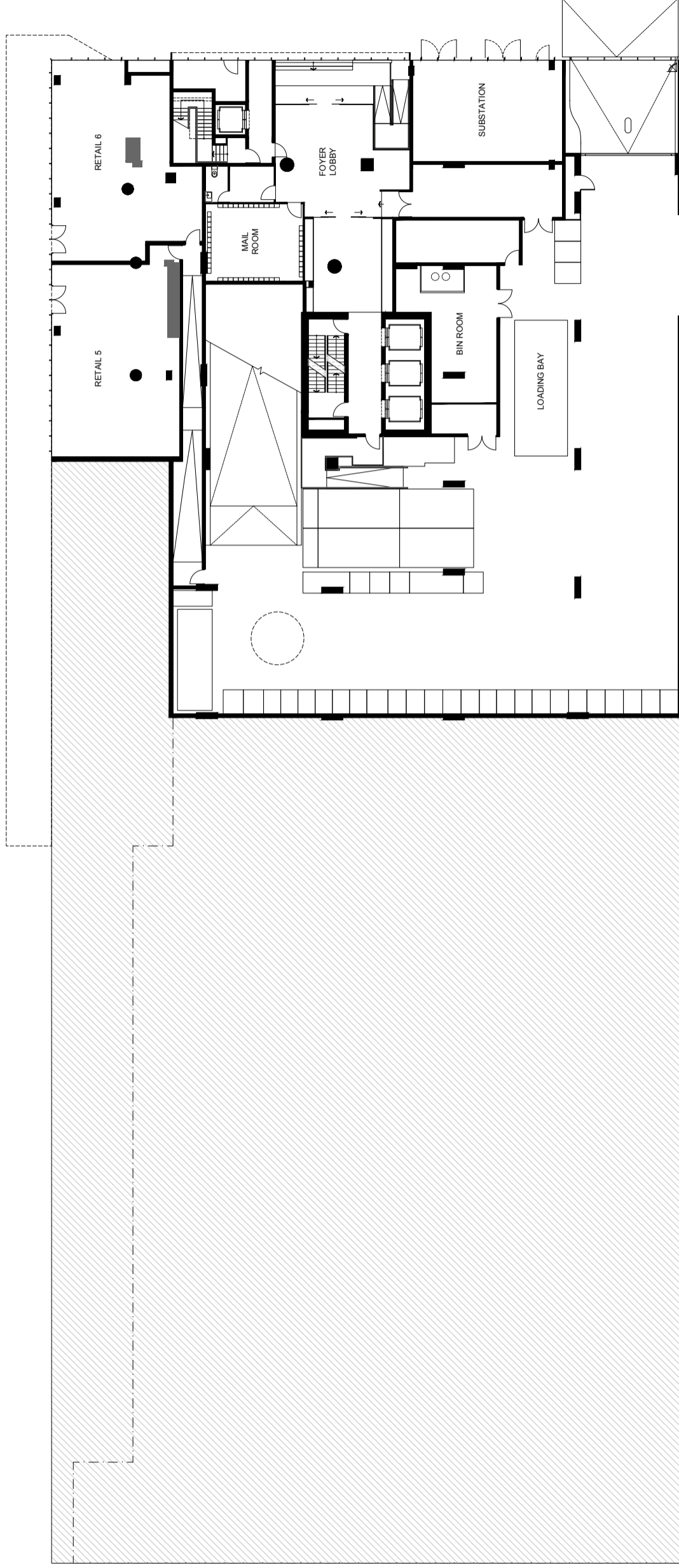
# Floor Plates

---

# VS.01

Retail Lot 5  
Area: 107 sqm\*  
Ceiling Height: 6.7 m\*\*

Retail Lot 6  
Area: 111 sqm\*  
Ceiling Height: 6.7 m\*\*



## V I C S Q

Floor Plate

### Lower Ground 2

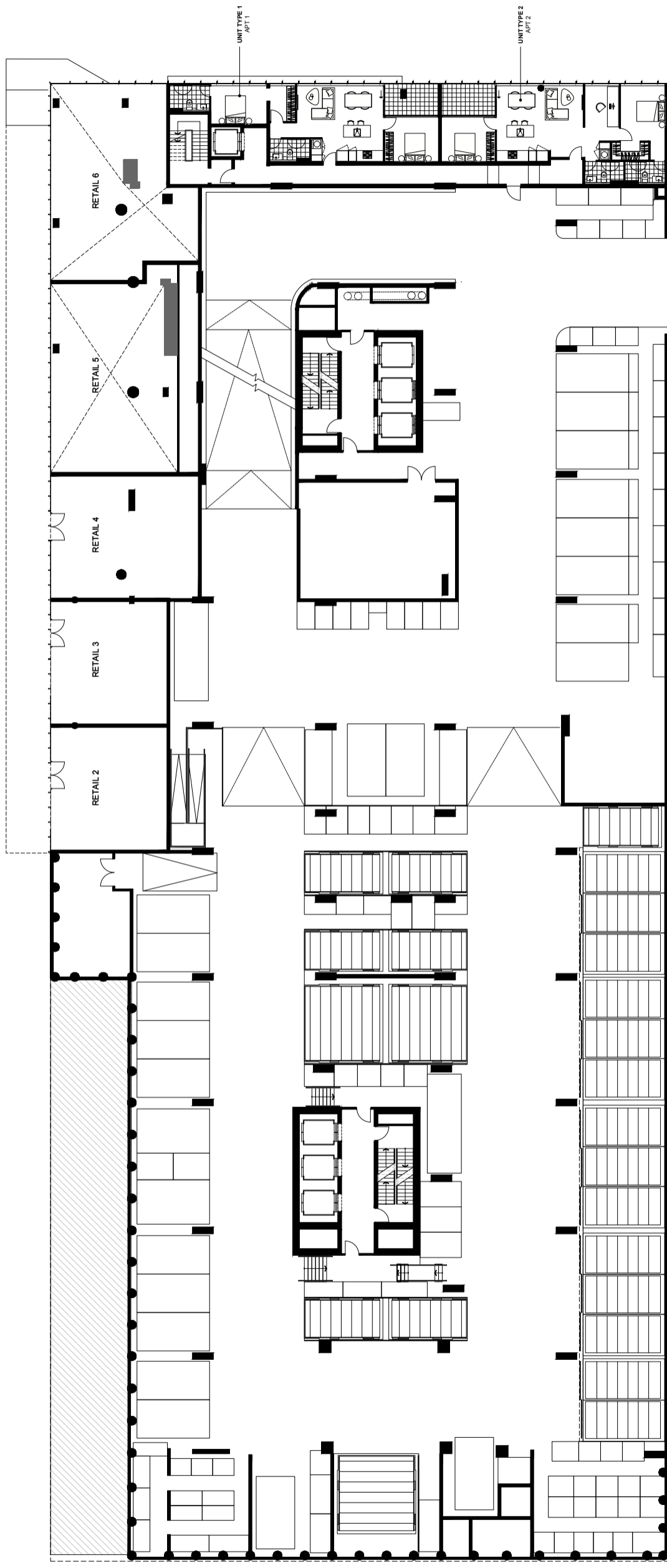
\* Approximately

\*\* Indicative only and are subject to change once all services requirements are finalised

These floor plans were prepared before the completion of the design, engineering and construction elements of the project. The information provided is illustrative only and as an aid to further investigations by potential purchasers and is subject to change in relation to areas and dimensions, floor layout, design, engineering, fittings and specifications. The areas and dimensions set out in the floor plans are calculated using the Property Council Method of Measurement for Residential Property current at the date of preparation of the floor plans. Whilst every effort is made to provide accurate and complete information, the developer does not warrant or represent that the information in this floor plan is free from errors or omissions or is suitable for your intended use. Subject to any terms implied by law, which cannot be excluded, the developer accepts no responsibility for any loss, damage, cost or expense (whether direct or indirect) suffered or incurred by the purchaser as a result of any error, omission or misrepresentation in the information contained in these floor plans. Purchasers should make their own enquiries and obtain their own independent legal advice in relation to these floor plans. Date of publication January 2020.



Retail Lot 2	Retail Lot 3	Retail Lot 4	Retail Lot 5	Retail Lot 6
Area: 64 sqm* Ceiling Height: 4.1 m**	Area: 64 sqm* Ceiling Height: 5.4 m**	Area: 82 sqm* Ceiling Height: 5.4 m**	Area: 107 sqm* Ceiling Height: 6.7 m**	Area: 111 sqm* Ceiling Height: 6.7 m**



## VIC SQ

Floor Plate  
**Lower Ground 1**

\* Approximately

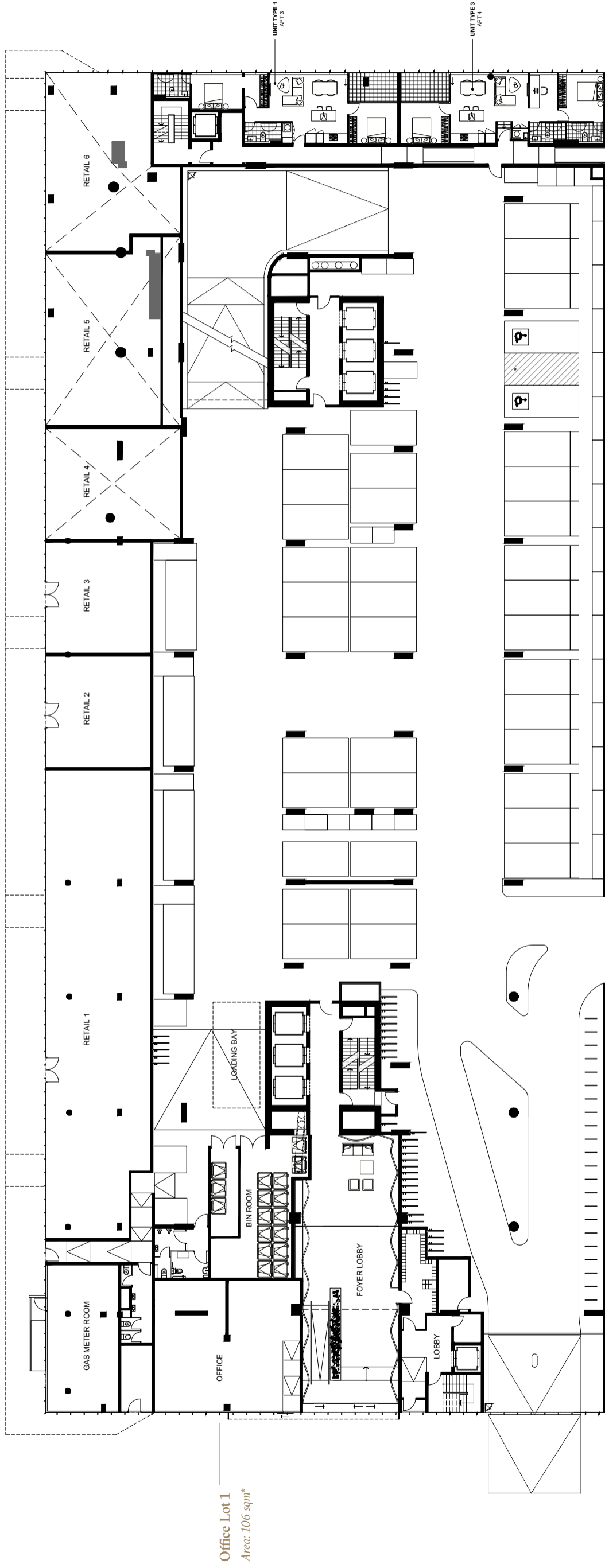
\*\* Indicative only and are subject to change once all services requirements are finalised

These floor plans were prepared before the completion of the design, engineering and construction elements of the project. The information provided is illustrative only and as an aid to further investigations by potential purchasers and is subject to change in relation to areas and dimensions, floor layout, design, engineering, fittings and specifications. The areas and dimensions set out in the floor plans are calculated using the Property Council Method of Measurement for Residential Property current at the date of preparation of the floor plans. Whilst every effort is made to provide accurate and complete information, the developer does not warrant or represent that the information in this floor plan is free from errors or omissions or is suitable for your intended use. Subject to any terms implied by law, which cannot be excluded, the developer accepts no responsibility for any loss, damage, cost or expense (whether direct or indirect) suffered or incurred by the purchaser as a result of any error, omission or misrepresentation in the information contained in these floor plans. Purchasers should make their own enquiries and obtain their own independent legal advice in relation to these floor plans. Date of publication January 2020.



# VS.01

Retail Lot 1	Retail Lot 2	Retail Lot 3	Retail Lot 4	Retail Lot 5	Retail Lot 6
Area: 264 sqm* Ceiling Height: 2.9 m**	Area: 64 sqm* Ceiling Height: 4.1 m**	Area: 64 sqm* Ceiling Height: 5.4 m**	Area: 82 sqm* Ceiling Height: 5.4 m**	Area: 107 sqm* Ceiling Height: 6.7 m**	Area: 111 sqm* Ceiling Height: 6.7 m**



Office Lot 1  
Area: 106 sqm\*

## VIC SQ

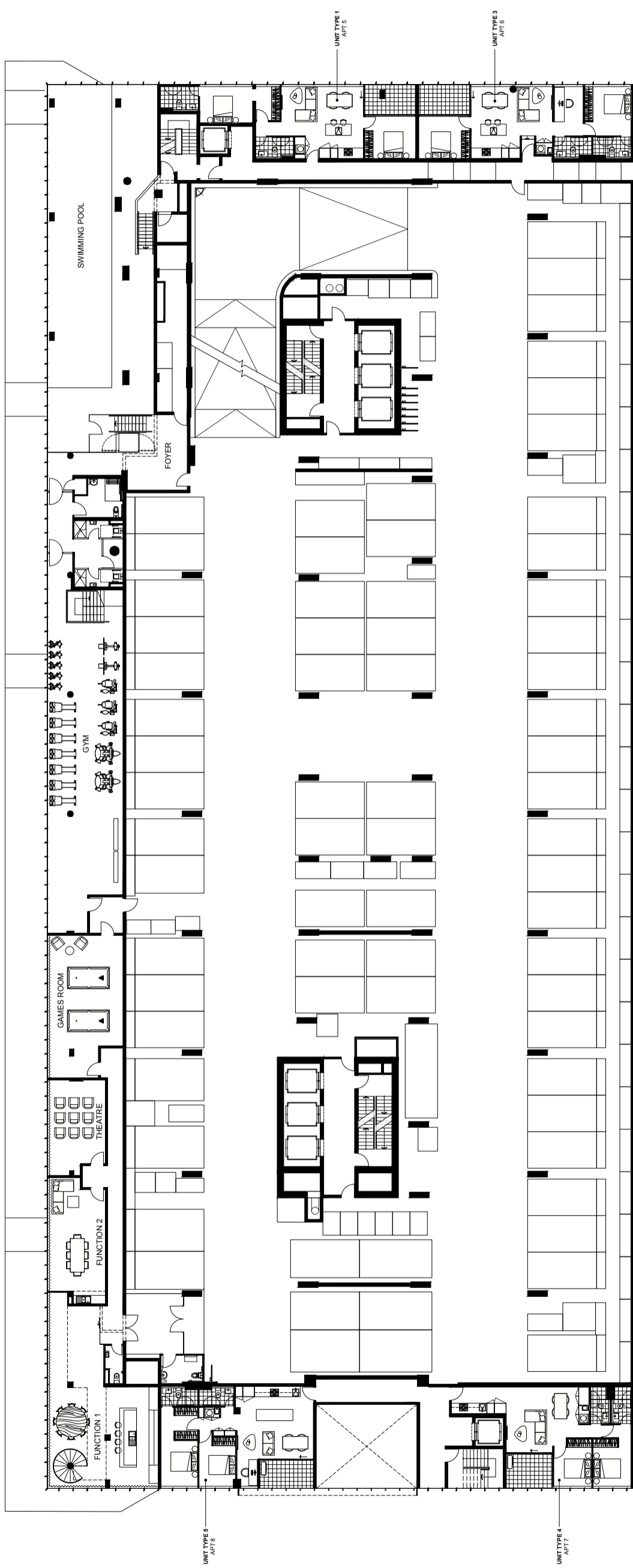
### Floor Plate Ground Floor

\* Approximately

\*\* Indicative only and are subject to change once all services requirements are finalised

These floor plans were prepared before the completion of the design, engineering and construction elements of the project. The information provided is illustrative only and as an aid to further investigations by potential purchasers and is subject to change in relation to areas and dimensions, floor layout, design, engineering, fittings and specifications. The areas and dimensions set out in the floor plans are calculated using the Property Council Method of Measurement for Residential Property current at the date of preparation of the floor plans. Whilst every effort is made to provide accurate and complete information, the developer does not warrant or represent that the information in this floor plan is free from errors or omissions or is suitable for your intended use. Subject to any terms implied by law, which cannot be excluded, the developer accepts no responsibility for any loss, damage, cost or expense (whether direct or indirect) suffered or incurred by the purchaser as a result of any error, omission or misrepresentation in the information contained in these floor plans. Purchasers should make their own enquiries and obtain their own independent legal advice in relation to these floor plans. Date of publication January 2020.

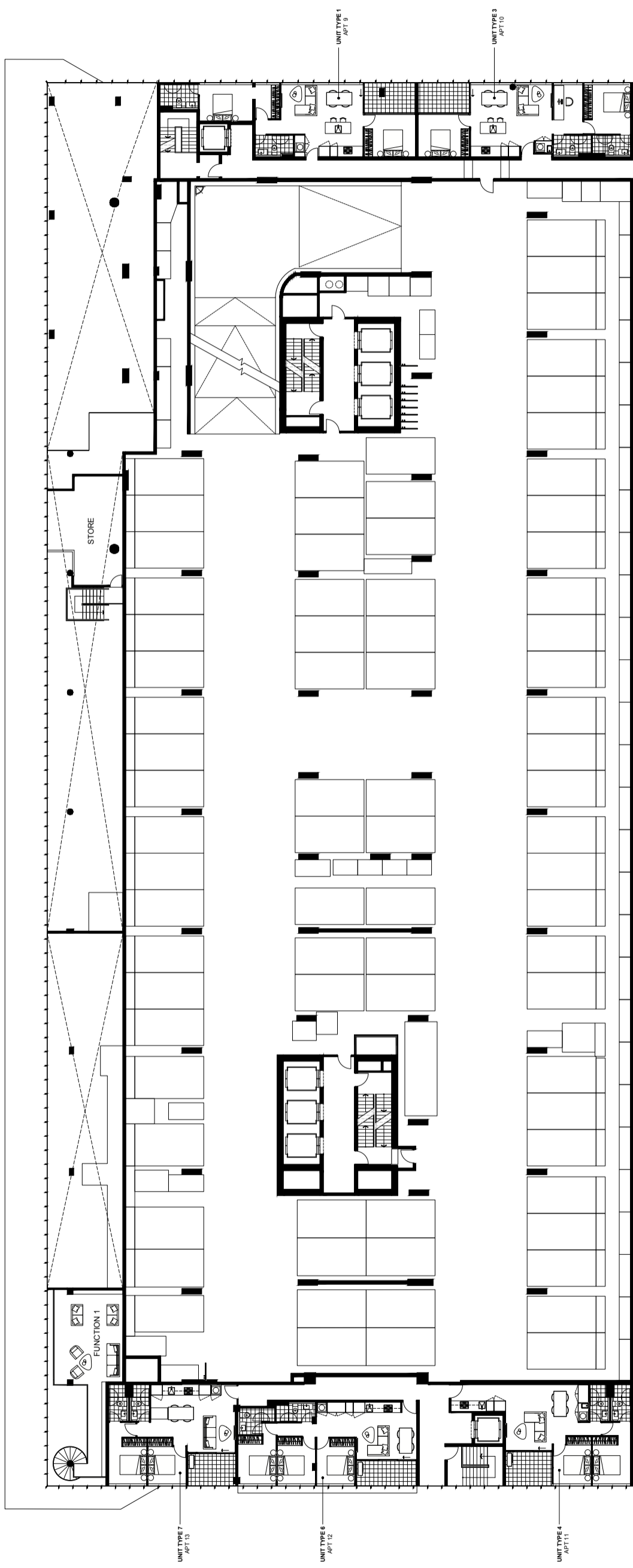




VIC SQ

These floor plans were prepared before the completion of the design, engineering and construction elements of the project. The information provided is illustrative only and as an aid to further investigations by potential purchasers and is subject to change in relation to areas and dimensions, floor layout, design, engineering, fittings and specifications. The areas and dimensions set out in the floor plans are calculated using the Property Council Method of Measurement for Residential Property current at the date of preparation of the floor plans. Whilst every effort is made to provide accurate and complete information, the developer does not warrant or represent that the information in this floor plan is free from errors or omissions or is suitable for your intended use. Subject to any terms implied by law, which cannot be excluded, the developer accepts no responsibility for any loss, damage, cost or expense (whether direct or indirect) suffered or incurred by the purchaser as a result of any error, omission or misrepresentation in the information contained in these floor plans. Purchasers should make their own enquiries and obtain their own independent legal advice in relation to these floor plans. Date of publication January 2020.

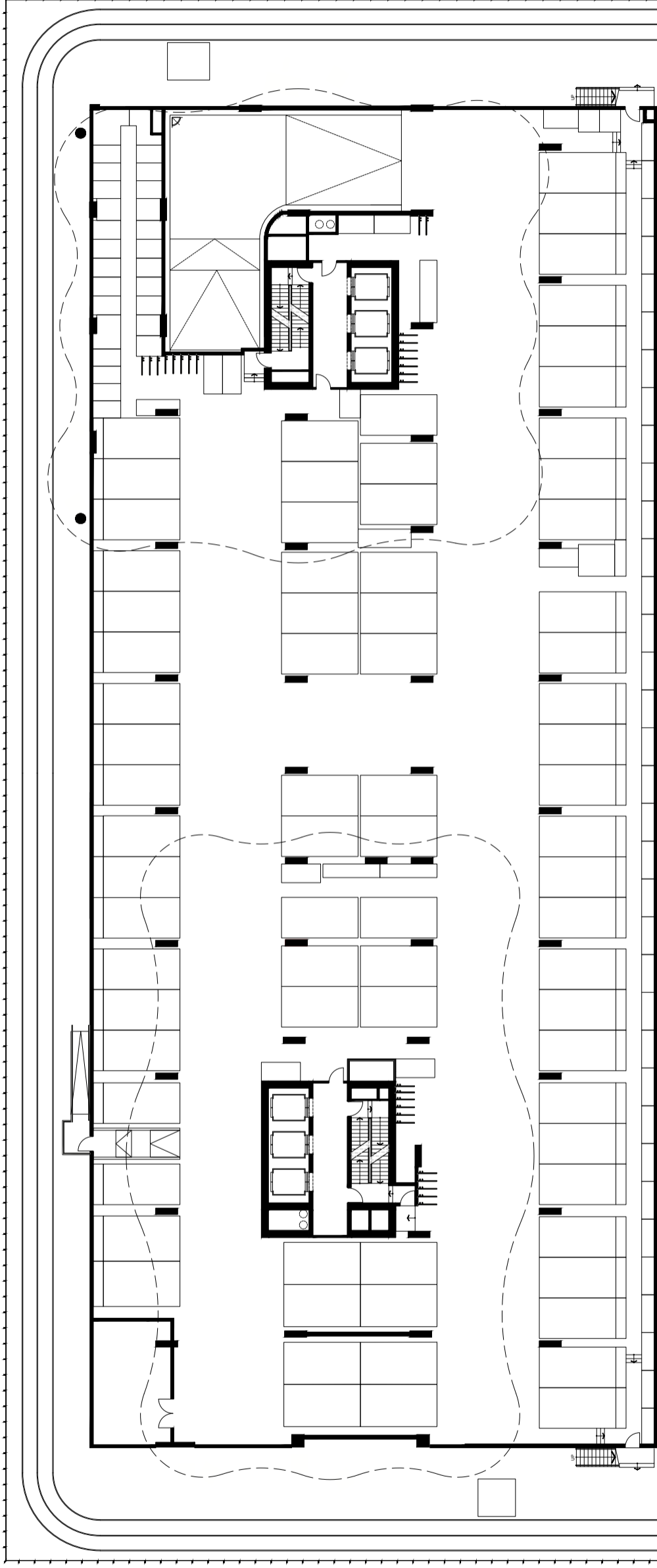




VIC SQ

These floor plans were prepared before the completion of the design, engineering and construction elements of the project. The information provided is illustrative only and as an aid to further investigations by potential purchasers and is subject to change in relation to areas and dimensions, floor layout, design, engineering, fittings and specifications. The areas and dimensions set out in the floor plans are calculated using the Property Council Method of Measurement for Residential Property current at the date of preparation of the floor plans. Whilst every effort is made to provide accurate and complete information, the developer does not warrant or represent that the information in this floor plan is free from errors or omissions or is suitable for your intended use. Subject to any terms implied by law, which cannot be excluded, the developer accepts no responsibility for any loss, damage, cost or expense (whether direct or indirect) suffered or incurred by the purchaser as a result of any error, omission or misrepresentation in the information contained in these floor plans. Purchasers should make their own enquiries and obtain their own independent legal advice in relation to these floor plans. Date of publication January 2020.



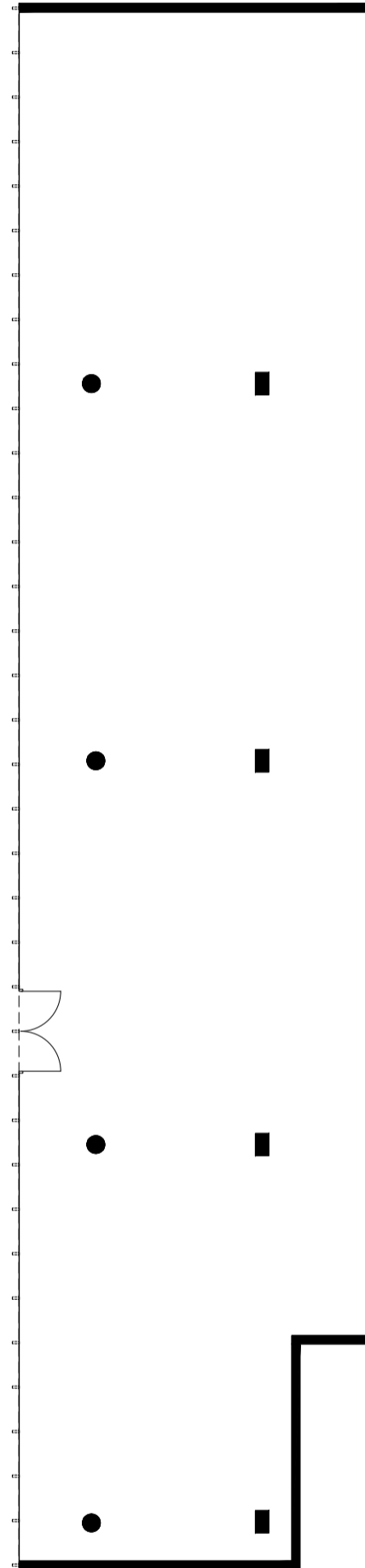


VIC SQ



# Floor Plans

---



*Floor Plan*  
**Retail Lot 1**

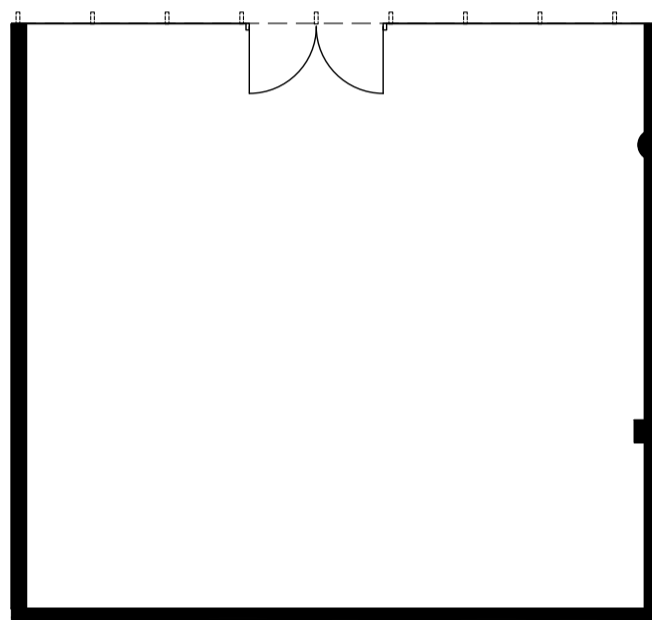
Area: 264 SQM\* Ceiling Height: 2.9 M\*\*

\* Approximately

\*\* Indicative only and are subject to change once all services requirements are finalised

These floor plans were prepared before the completion of the design, engineering and construction elements of the project. The information provided is illustrative only and as an aid to further investigations by potential purchasers and is subject to change in relation to areas and dimensions, floor layout, design, engineering, fittings and specifications. The areas and dimensions set out in the floor plans are calculated using the Property Council Method of Measurement for Residential Property current at the date of preparation of the floor plans. Whilst every effort is made to provide accurate and complete information, the developer does not warrant or represent that the information in this floor plan is free from errors or omissions or is suitable for your intended use. Subject to any terms implied by law which cannot be excluded, the developer accepts no responsibility for any loss, damage, cost or expense (whether direct or indirect) suffered or incurred by the purchaser as a result of any error, omission or misrepresentation in the information contained in these floor plans. Purchasers should make their own enquiries and obtain their own independent legal advice in relation to these floor plans. Date of publication January 2020.





*Floor Plan*

### **Retail Lot 2**

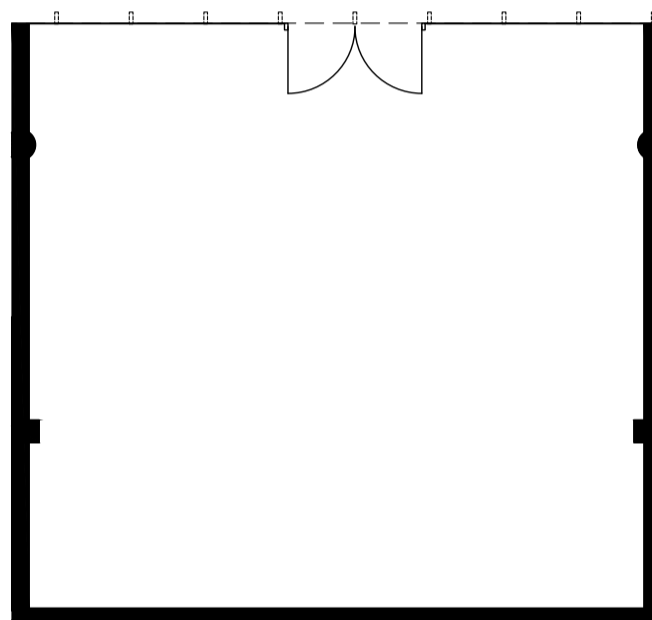
Area: 64 SQM\* Ceiling Height: 4.1 M\*\*

\* Approximately

\*\* Indicative only and are subject to change once all services requirements are finalised

These floor plans were prepared before the completion of the design, engineering and construction elements of the project. The information provided is illustrative only and as an aid to further investigations by potential purchasers and is subject to change in relation to areas and dimensions, floor layout, design, engineering, fittings and specifications. The areas and dimensions set out in the floor plans are calculated using the Property Council Method of Measurement for Residential Property current at the date of preparation of the floor plans. Whilst every effort is made to provide accurate and complete information, the developer does not warrant or represent that the information in this floor plan is free from errors or omissions or is suitable for your intended use. Subject to any terms implied by law which cannot be excluded, the developer accepts no responsibility for any loss, damage, cost or expense (whether direct or indirect) suffered or incurred by the purchaser as a result of any error, omission or misrepresentation in the information contained in these floor plans. Purchasers should make their own enquiries and obtain their own independent legal advice in relation to these floor plans. Date of publication January 2020.





---

*Floor Plan*  
**Retail Lot 3**

Area: 64 SQM\* Ceiling Height: 5.4 M\*\*

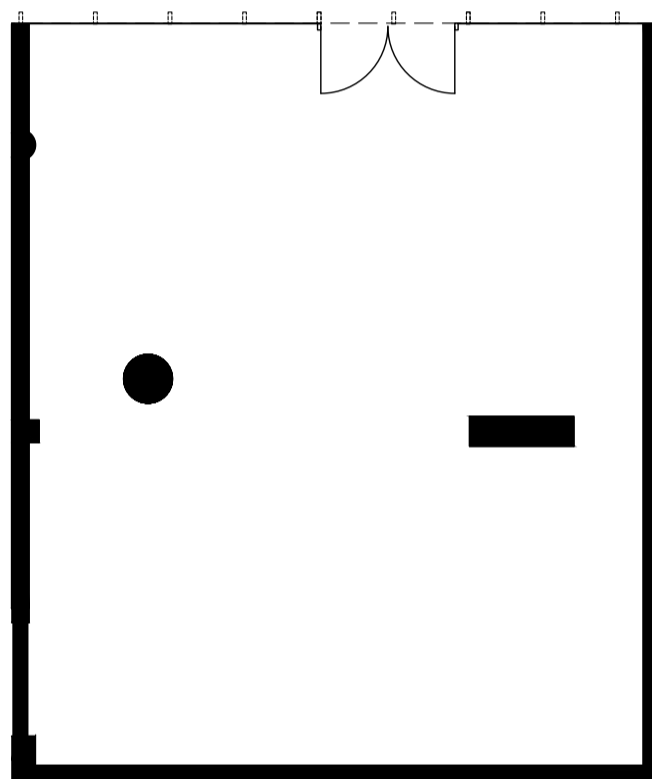
\* Approximately

\*\* Indicative only and are subject to change once all services requirements are finalised

V I C S Q

These floor plans were prepared before the completion of the design, engineering and construction elements of the project. The information provided is illustrative only and as an aid to further investigations by potential purchasers and is subject to change in relation to areas and dimensions, floor layout, design, engineering, fittings and specifications. The areas and dimensions set out in the floor plans are calculated using the Property Council Method of Measurement for Residential Property current at the date of preparation of the floor plans. Whilst every effort is made to provide accurate and complete information, the developer does not warrant or represent that the information in this floor plan is free from errors or omissions or is suitable for your intended use. Subject to any terms implied by law which cannot be excluded, the developer accepts no responsibility for any loss, damage, cost or expense (whether direct or indirect) suffered or incurred by the purchaser as a result of any error, omission or misrepresentation in the information contained in these floor plans. Purchasers should make their own enquiries and obtain their own independent legal advice in relation to these floor plans. Date of publication January 2020.





*Floor Plan*

### **Retail Lot 4**

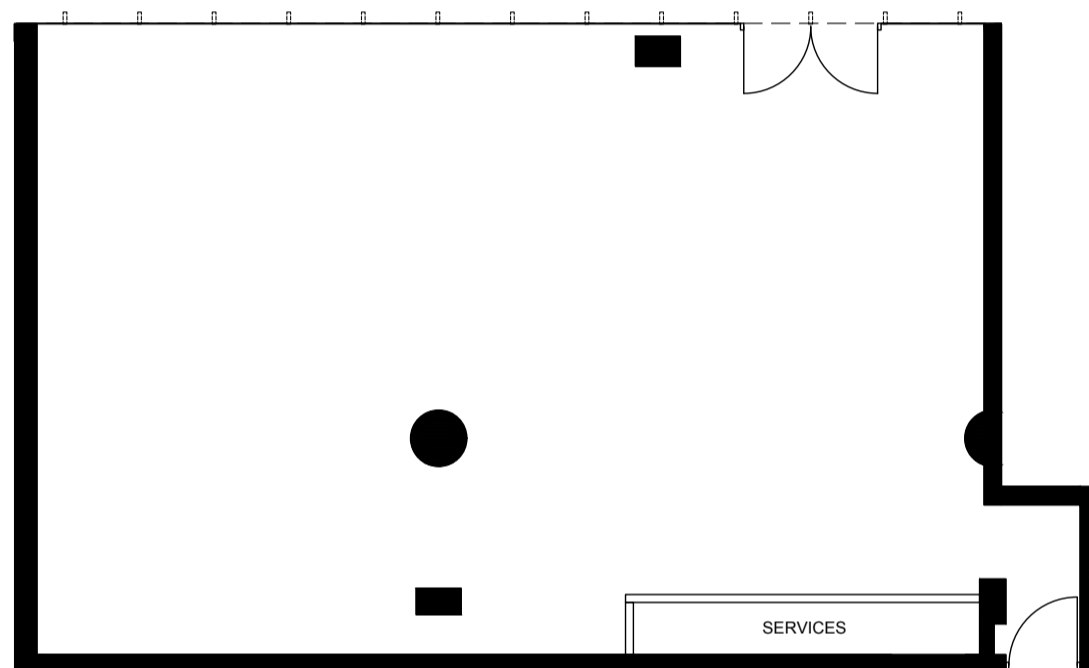
Area: 82 SQM\* Ceiling Height: 5.4 M\*\*

\* Approximately

\*\* Indicative only and are subject to change once all services requirements are finalised

These floor plans were prepared before the completion of the design, engineering and construction elements of the project. The information provided is illustrative only and as an aid to further investigations by potential purchasers and is subject to change in relation to areas and dimensions, floor layout, design, engineering, fittings and specifications. The areas and dimensions set out in the floor plans are calculated using the Property Council Method of Measurement for Residential Property current at the date of preparation of the floor plans. Whilst every effort is made to provide accurate and complete information, the developer does not warrant or represent that the information in this floor plan is free from errors or omissions or is suitable for your intended use. Subject to any terms implied by law which cannot be excluded, the developer accepts no responsibility for any loss, damage, cost or expense (whether direct or indirect) suffered or incurred by the purchaser as a result of any error, omission or misrepresentation in the information contained in these floor plans. Purchasers should make their own enquiries and obtain their own independent legal advice in relation to these floor plans. Date of publication January 2020.





*Floor Plan*  
**Retail Lot 5**

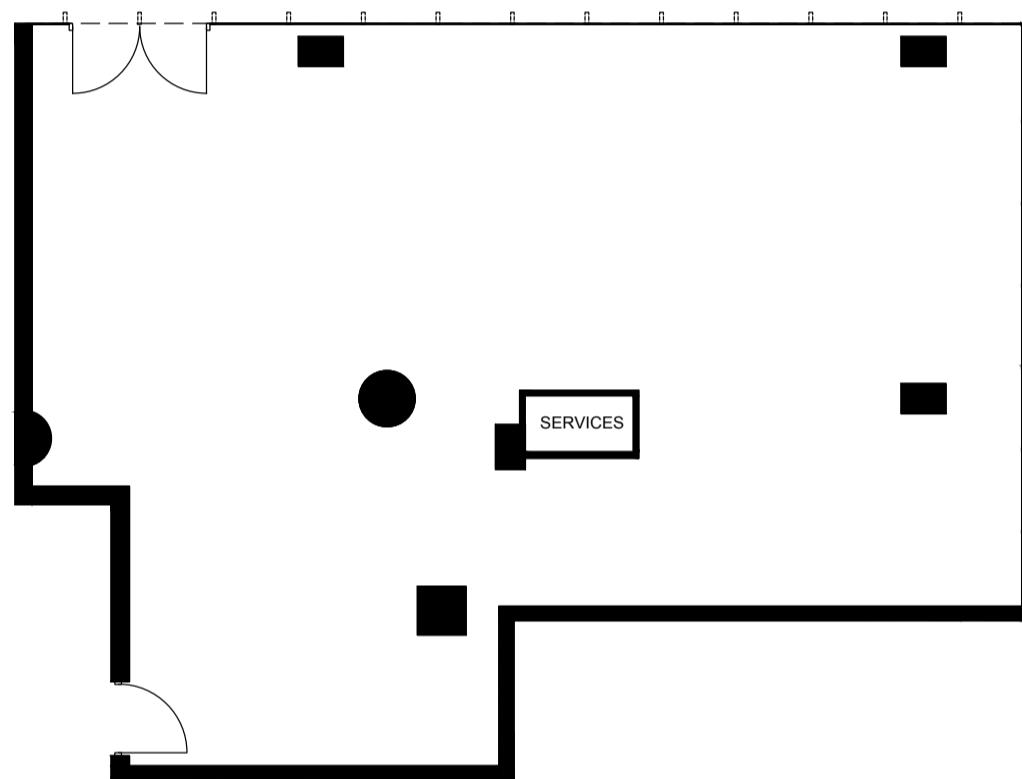
Area: 107 SQM\* Ceiling Height: 6.7 M\*\*

\* Approximately

\*\* Indicative only and are subject to change once all services requirements are finalised

These floor plans were prepared before the completion of the design, engineering and construction elements of the project. The information provided is illustrative only and as an aid to further investigations by potential purchasers and is subject to change in relation to areas and dimensions, floor layout, design, engineering, fittings and specifications. The areas and dimensions set out in the floor plans are calculated using the Property Council Method of Measurement for Residential Property current at the date of preparation of the floor plans. Whilst every effort is made to provide accurate and complete information, the developer does not warrant or represent that the information in this floor plan is free from errors or omissions or is suitable for your intended use. Subject to any terms implied by law which cannot be excluded, the developer accepts no responsibility for any loss, damage, cost or expense (whether direct or indirect) suffered or incurred by the purchaser as a result of any error, omission or misrepresentation in the information contained in these floor plans. Purchasers should make their own enquiries and obtain their own independent legal advice in relation to these floor plans. Date of publication January 2020.





*Floor Plan*  
**Retail Lot 6**

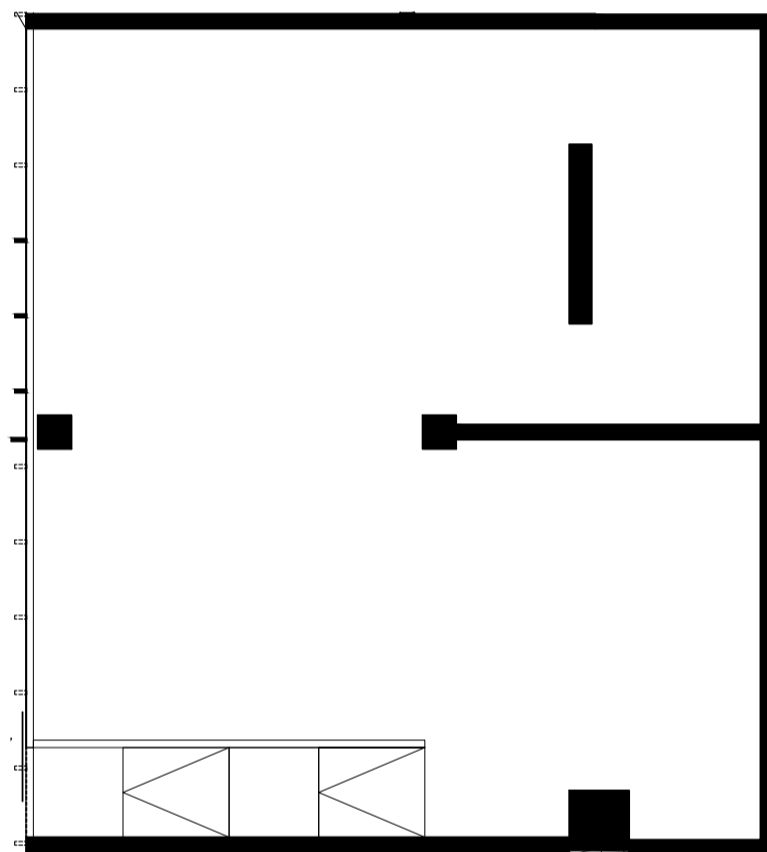
Area: 111 SQM\* Ceiling Height: 6.7 M\*\*

\* Approximately

\*\* Indicative only and are subject to change once all services requirements are finalised

These floor plans were prepared before the completion of the design, engineering and construction elements of the project. The information provided is illustrative only and as an aid to further investigations by potential purchasers and is subject to change in relation to areas and dimensions, floor layout, design, engineering, fittings and specifications. The areas and dimensions set out in the floor plans are calculated using the Property Council Method of Measurement for Residential Property current at the date of preparation of the floor plans. Whilst every effort is made to provide accurate and complete information, the developer does not warrant or represent that the information in this floor plan is free from errors or omissions or is suitable for your intended use. Subject to any terms implied by law which cannot be excluded, the developer accepts no responsibility for any loss, damage, cost or expense (whether direct or indirect) suffered or incurred by the purchaser as a result of any error, omission or misrepresentation in the information contained in these floor plans. Purchasers should make their own enquiries and obtain their own independent legal advice in relation to these floor plans. Date of publication January 2020.





*Floor Plan*  
**Office Lot 1**

Area: 106 SQM\*

\* Approximately

These floor plans were prepared before the completion of the design, engineering and construction elements of the project. The information provided is illustrative only and as an aid to further investigations by potential purchasers and is subject to change in relation to areas and dimensions, floor layout, design, engineering, fittings and specifications. The areas and dimensions set out in the floor plans are calculated using the Property Council Method of Measurement for Residential Property current at the date of preparation of the floor plans. Whilst every effort is made to provide accurate and complete information, the developer does not warrant or represent that the information in this floor plan is free from errors or omissions or is suitable for your intended use. Subject to any terms implied by law which cannot be excluded, the developer accepts no responsibility for any loss, damage, cost or expense (whether direct or indirect) suffered or incurred by the purchaser as a result of any error, omission or misrepresentation in the information contained in these floor plans. Purchasers should make their own enquiries and obtain their own independent legal advice in relation to these floor plans. Date of publication January 2020.



VIC—SQ.COM.AU



GROWLAND

Disclaimer statement: Growland Group Pty Ltd (A.C.N 166 902 629) , its related entities, the landowner, developer , its representatives, employees or agent (collectively referred to as Growland) have endeavoured to ensure the information in this brochure is correct, it is to be used as a general guide only. The representations shown are artistic impressions only. In particular, the plans, images, dimensions, sizes and areas, facilities, amenities, infrastructure, the configuration of these and other information contained in this brochure (Property Information) are indicative only and may change depending on a range of variable factors including, but not limited to, council building approvals and planning consents, market conditions, finance and government and municipal requirements. Furniture and home decorator items are for illustrative purposes only and are not included in the purchase price or in any contract for the sale for property referred to in this brochure. The purchasers are directed to refer to the contract and vendor statement and must obtain all necessary and relevant information, review all information carefully including any restrictions in the use of the property. As a result, the Property Information is preliminary only and subject to change without notice. We recommend that you undertake your own enquiries, obtain independent legal advice and confirm the current Property Information at the time you enter into any purchase contract. This brochure has been produced for general information purposes only and does not constitute part of an offer or contract for the sale of any property referred to in this brochure. Growland, its related entities, the landowner, developer , its representatives, employees or agent (collectively referred to as Growland) do not make any representations or give any warranties that the information set out in this brochure is or will remain accurate or complete at all times and they disclaim all liability for harm, loss, costs or damage which arises in connection with any use or reliance on the information.