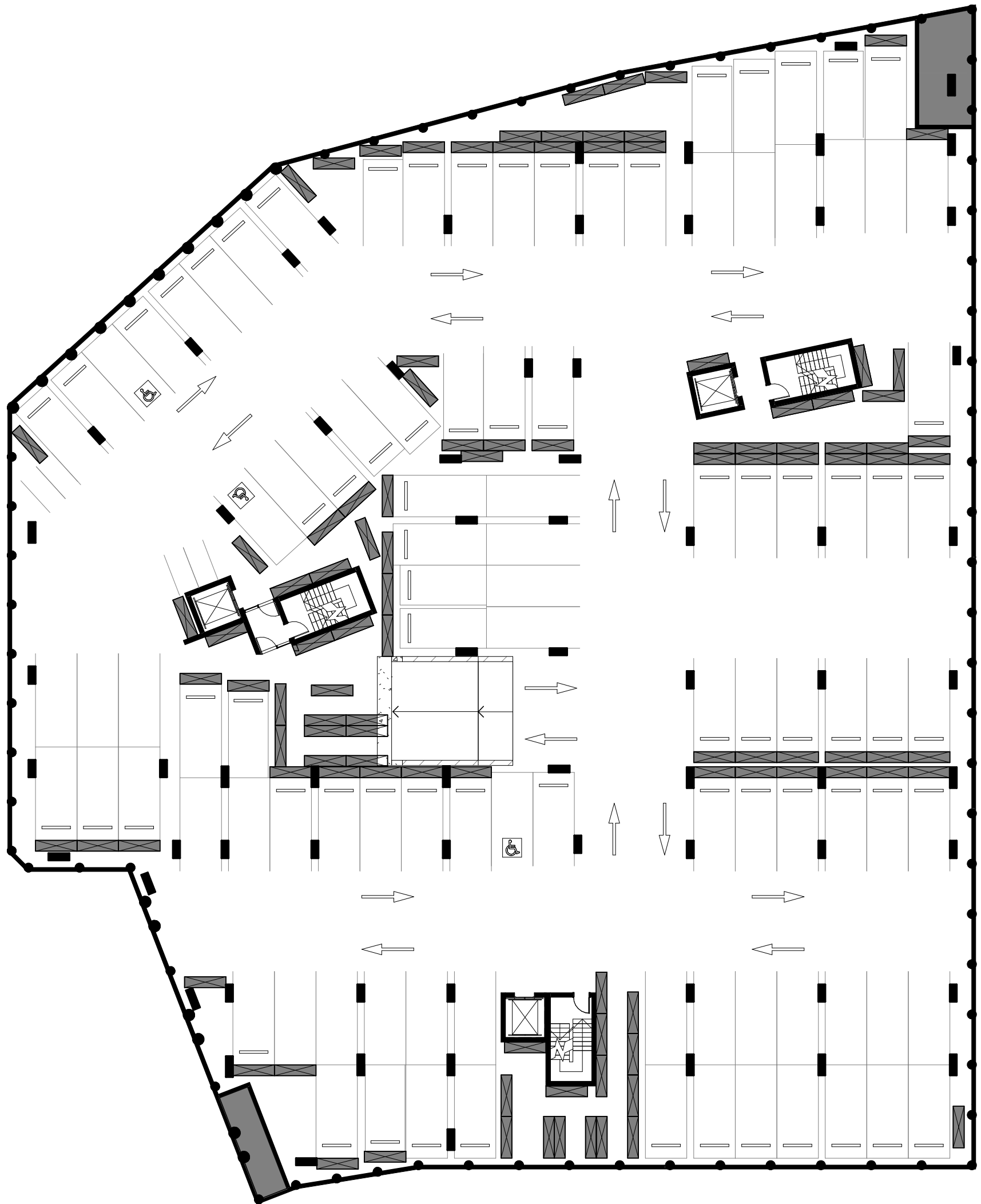


THE ESTABLISHMENT



BASEMENT 3 PLAN

BLOCK 6, SECTION 224, GUNGAHLIN
 DRAWING No M-0097
 DRAWING TITLE BASEMENT 3 PLAN

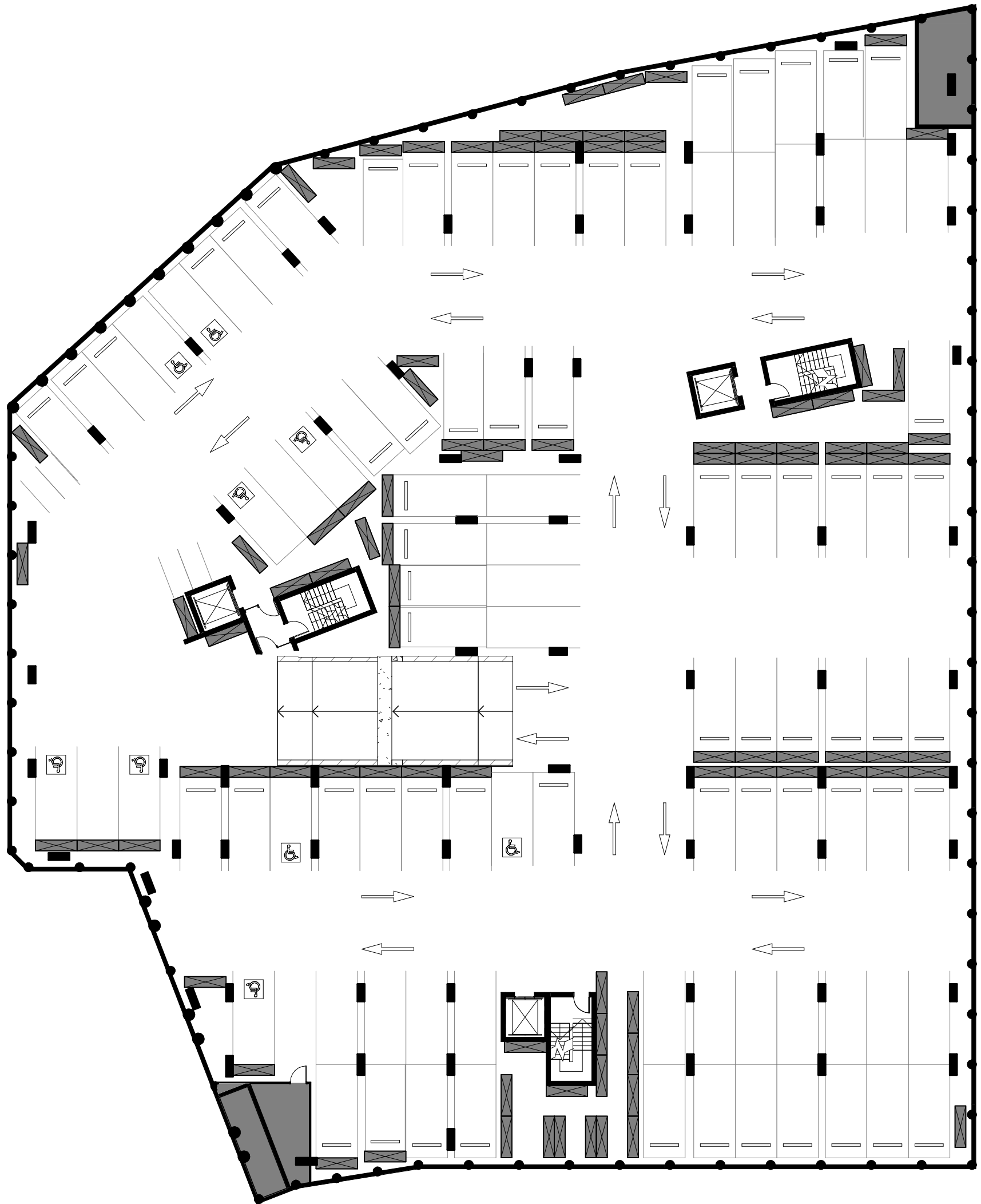
REV D
 DATE: 28/02/20

SCALE BAR:
 0 1 2 5 10

empire | GEOCON

Whilst we endeavor to ensure the contents of these plans are correct at the time of printing, the information they contain is to be used as a guide only. Furnishings and floor coverings are for illustrative purposes only and are not shown to scale nor included in the stated price (unless expressly included). The columns shown may vary in diameter throughout the building. Area calculations are for gross floor area and are measured to the exterior face of end walls, the centreline of party walls & the exterior face of common area walls. The plans were completed prior to the completion of final design, engineering and construction of the building. Therefore design, engineering, dimensions, fittings and specifications are subject to change without notice in accordance with the provisions of the Contract of Sale.

THE ESTABLISHMENT



BASEMENT 2 PLAN

BLOCK 6, SECTION 224, GUNGAHLIN
 DRAWING No M-0098
 DRAWING TITLE BASEMENT 2 PLAN

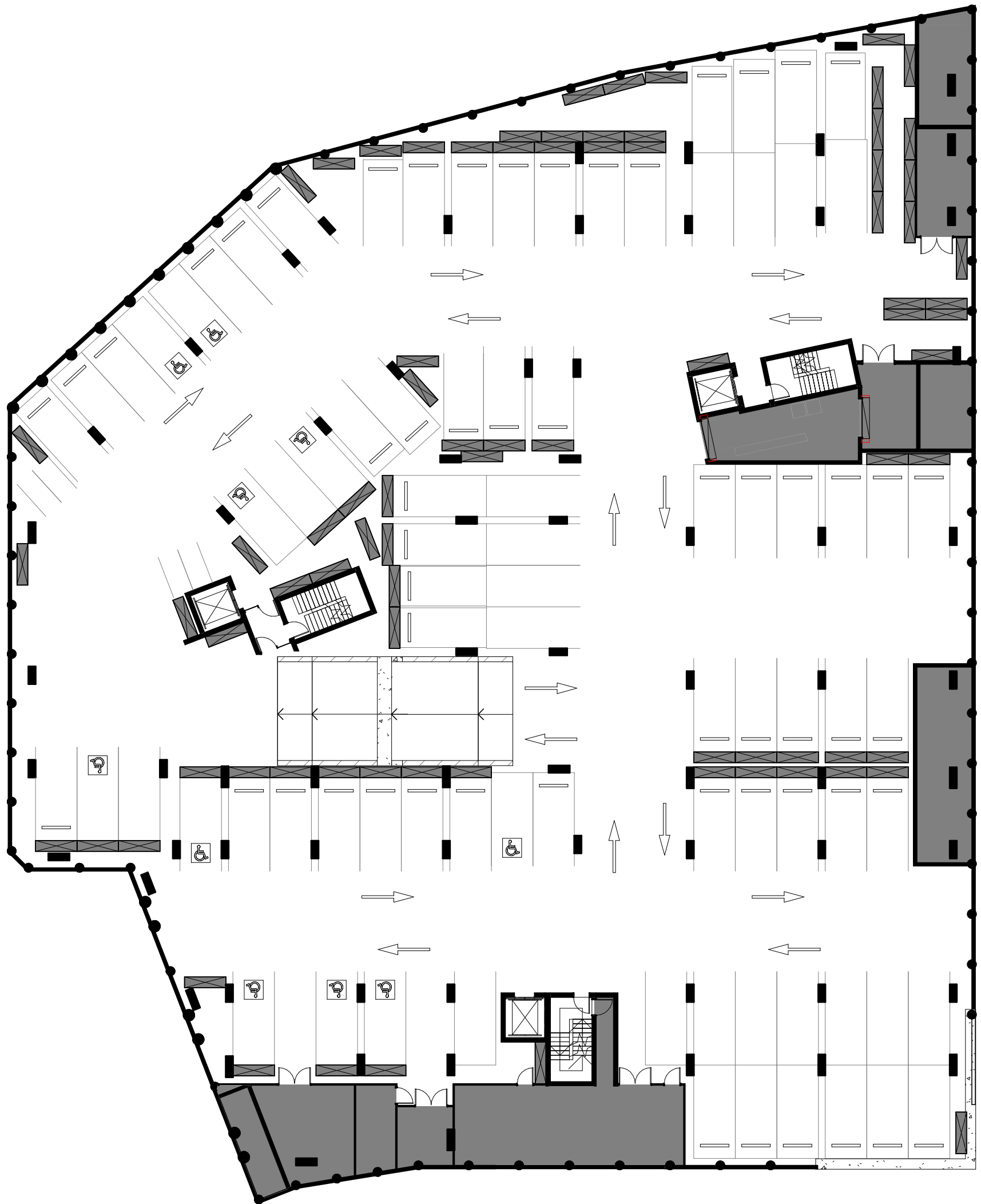
REV D
 DATE: 28/02/20

SCALE BAR:
 0 1 2 5 10

empire | GEOCON

Whilst we endeavor to ensure the contents of these plans are correct at the time of printing, the information they contain is to be used as a guide only. Furnishings and floor coverings are for illustrative purposes only and are not shown to scale nor included in the stated price (unless expressly included). The columns shown may vary in diameter throughout the building. Area calculations are for gross floor area and are measured to the exterior face of end walls, the centreline of party walls & the exterior face of common area walls. The plans were completed prior to the completion of final design, engineering and construction of the building. Therefore design, engineering, dimensions, fittings and specifications are subject to change without notice in accordance with the provisions of the Contract of Sale.

THE ESTABLISHMENT



BASEMENT 1 PLAN

BLOCK 6, SECTION 224, GUNGAHLIN
 DRAWING No M-0099
 DRAWING TITLE BASEMENT 1 PLAN

REV D
 DATE: 28/02/20

SCALE BAR:
 0 1 2 5 10

empire | GEOCON

Whilst we endeavor to ensure the contents of these plans are correct at the time of printing, the information they contain is to be used as a guide only. Furnishings and floor coverings are for illustrative purposes only and are not shown to scale nor included in the stated price (unless expressly included). The columns shown may vary in diameter throughout the building. Area calculations are for gross floor area and are measured to the exterior face of end walls, the centreline of party walls & the exterior face of common area walls. The plans were completed prior to the completion of final design, engineering and construction of the building. Therefore design, engineering, dimensions, fittings, finishes and specifications are subject to change without notice in accordance with the provisions of the Contract of Sale.

THE ESTABLISHMENT



GROUND PLAN

BLOCK 6, SECTION 224, GUNGAHLIN
 DRAWING No M-0100
 DRAWING TITLE GROUND PLAN

REV D
 DATE: 28/02/20

SCALE BAR:
 0 1 2 5 10

empire | GEOCON

Whilst we endeavor to ensure the contents of these plans are correct at the time of printing, the information they contain is to be used as a guide only. Furnishings and floor coverings are for illustrative purposes only and are not shown to scale nor included in the stated price (unless expressly included). The columns shown may vary in diameter throughout the building. Area calculations are for gross floor area and are measured to the exterior face of end walls, the centreline of party walls & the exterior face of common area walls. The plans were completed prior to the completion of final design, engineering and construction of the building. Therefore design, engineering, dimensions, fittings, finishes and specifications are subject to change without notice in accordance with the provisions of the Contract of Sale.

THE ESTABLISHMENT



LEVEL 1 PLAN

BLOCK 6, SECTION 224, GUNGAHLIN

DRAWING No DRAWING TITLE

M-0102 LEVEL 1 PLAN

REV

D

DATE:

28/02/20

SCALE BAR:



empire | GEOCON

Whilst we endeavor to ensure the contents of these plans are correct at the time of printing, the information they contain is to be used as a guide only. Furnishings and floor coverings are for illustrative purposes only and are not shown to scale nor included in the stated price (unless expressly included). The columns shown may vary in diameter throughout the building. Area calculations are for gross floor area and are measured to the exterior face of end walls, the centreline of party walls & the exterior face of common area walls. The plans were completed prior to the completion of final design, engineering and construction of the building. Therefore design, engineering, dimensions, fittings, finishes and specifications are subject to change without notice in accordance with the provisions of the Contract of Sale.



THE ESTABLISHMENT



LEVEL 2 PLAN

BLOCK 6, SECTION 224, GUNGAHLIN

DRAWING No DRAWING TITLE

M-0103 LEVEL 2 PLAN

REV

D

DATE:

28/02/20

SCALE BAR:



empire | GEOCON

Whilst we endeavor to ensure the contents of these plans are correct at the time of printing, the information they contain is to be used as a guide only. Furnishings and floor coverings are for illustrative purposes only and are not shown to scale nor included in the stated price (unless expressly included). The columns shown may vary in diameter throughout the building. Area calculations are for gross floor area and are measured to the exterior face of end walls, the centreline of party walls & the exterior face of common area walls. The plans were completed prior to the completion of final design, engineering and construction of the building. Therefore design, engineering, dimensions, fittings, finishes and specifications are subject to change without notice in accordance with the provisions of the Contract of Sale.

THE ESTABLISHMENT



LEVEL 3 PLAN

BLOCK 6, SECTION 224, GUNGAHLIN

DRAWING No DRAWING TITLE

M-0104 LEVEL 3 PLAN

REV

D

DATE:

28/02/20

SCALE BAR:



empire | GEOCON

Whilst we endeavor to ensure the contents of these plans are correct at the time of printing, the information they contain is to be used as a guide only. Furnishings and floor coverings are for illustrative purposes only and are not shown to scale nor included in the stated price (unless expressly included). The columns shown may vary in diameter throughout the building. Area calculations are for gross floor area and are measured to the exterior face of end walls, the centreline of party walls & the exterior face of common area walls. The plans were completed prior to the completion of final design, engineering and construction of the building. Therefore design, engineering, dimensions, fittings, finishes and specifications are subject to change without notice in accordance with the provisions of the Contract of Sale.



THE ESTABLISHMENT



LEVEL 4 PLAN

BLOCK 6, SECTION 224, GUNGAHLIN
DRAWING No DRAWING TITLE
M-0105 LEVEL 4 PLAN

REV DATE:
D 28/02/20

SCALE BAR:
0 1 2 5 10

empire | GEOCON

Whilst we endeavor to ensure the contents of these plans are correct at the time of printing, the information they contain is to be used as a guide only. Furnishings and floor coverings are for illustrative purposes only and are not shown to scale nor included in the stated price (unless expressly included). The columns shown may vary in diameter throughout the building. Area calculations are for gross floor area and are measured to the exterior face of end walls, the centreline of party walls & the exterior face of common area walls. The plans were completed prior to the completion of final design, engineering and construction of the building. Therefore design, engineering, dimensions, fittings, finishes and specifications are subject to change without notice in accordance with the provisions of the Contract of Sale.

THE ESTABLISHMENT



LEVEL 5 PLAN

BLOCK 6, SECTION 224, GUNGAHLIN
 DRAWING No M-0106
 DRAWING TITLE LEVEL 5 PLAN

REV D
 DATE: 28/02/20

SCALE BAR:
 0 1 2 5 10

empire | GEOCON

Whilst we endeavor to ensure the contents of these plans are correct at the time of printing, the information they contain is to be used as a guide only. Furnishings and floor coverings are for illustrative purposes only and are not shown to scale nor included in the stated price (unless expressly included). The columns shown may vary in diameter throughout the building. Area calculations are for gross floor area and are measured to the exterior face of end walls, the centreline of party walls & the exterior face of common area walls. The plans were completed prior to the completion of final design, engineering and construction of the building. Therefore design, engineering, dimensions, fittings, finishes and specifications are subject to change without notice in accordance with the provisions of the Contract of Sale.



THE ESTABLISHMENT



LEVEL 6 PLAN

BLOCK 6, SECTION 224, GUNGAHLIN

DRAWING No DRAWING TITLE

M-0107 LEVEL 6 PLAN

REV

D

DATE:

28/02/20

SCALE BAR:



empire | GEOCON

Whilst we endeavor to ensure the contents of these plans are correct at the time of printing, the information they contain is to be used as a guide only. Furnishings and floor coverings are for illustrative purposes only and are not shown to scale nor included in the stated price (unless expressly included). The columns shown may vary in diameter throughout the building. Area calculations are for gross floor area and are measured to the exterior face of end walls, the centreline of party walls & the exterior face of common area walls. The plans were completed prior to the completion of final design, engineering and construction of the building. Therefore design, engineering, dimensions, fittings, finishes and specifications are subject to change without notice in accordance with the provisions of the Contract of Sale.

THE ESTABLISHMENT



LEVEL 7 PLAN

BLOCK 6, SECTION 224, GUNGAHLIN
 DRAWING No M-0108
 DRAWING TITLE LEVEL 7 PLAN

REV D
 DATE: 28/02/20

SCALE BAR:
 0 1 2 5 10

empire | GEOCON

Whilst we endeavor to ensure the contents of these plans are correct at the time of printing, the information they contain is to be used as a guide only. Furnishings and floor coverings are for illustrative purposes only and are not shown to scale nor included in the stated price (unless expressly included). The columns shown may vary in diameter throughout the building. Area calculations are for gross floor area and are measured to the exterior face of end walls, the centreline of party walls & the exterior face of common area walls. The plans were completed prior to the completion of final design, engineering and construction of the building. Therefore design, engineering, dimensions, fittings, finishes and specifications are subject to change without notice in accordance with the provisions of the Contract of Sale.

THE ESTABLISHMENT



LEVEL 8 PLAN

BLOCK 6, SECTION 224, GUNGAHLIN

DRAWING No DRAWING TITLE

M-0109 LEVEL 8 PLAN

REV

D

DATE:

28/02/20

SCALE BAR:



empire | GEOCON

Whilst we endeavor to ensure the contents of these plans are correct at the time of printing, the information they contain is to be used as a guide only. Furnishings and floor coverings are for illustrative purposes only and are not shown to scale nor included in the stated price (unless expressly included). The columns shown may vary in diameter throughout the building. Area calculations are for gross floor area and are measured to the exterior face of end walls, the centreline of party walls & the exterior face of common area walls. The plans were completed prior to the completion of final design, engineering and construction of the building. Therefore design, engineering, dimensions, fittings and specifications are subject to change without notice in accordance with the provisions of the Contract of Sale.

THE ESTABLISHMENT



LEVEL 9 PLAN

BLOCK 6, SECTION 224, GUNGAHLIN

DRAWING No DRAWING TITLE

M-0110 LEVEL 9 PLAN

REV

D

DATE:

28/02/20

SCALE BAR:



empire | GEOCON

Whilst we endeavor to ensure the contents of these plans are correct at the time of printing, the information they contain is to be used as a guide only. Furnishings and floor coverings are for illustrative purposes only and are not shown to scale nor included in the stated price (unless expressly included). The columns shown may vary in diameter throughout the building. Area calculations are for gross floor area and are measured to the exterior face of end walls, the centreline of party walls & the exterior face of common area walls. The plans were completed prior to the completion of final design, engineering and construction of the building. Therefore design, engineering, dimensions, fittings and specifications are subject to change without notice in accordance with the provisions of the Contract of Sale.

THE ESTABLISHMENT



LEVEL 10 PLAN

BLOCK 6, SECTION 224, GUNGAHLIN
 DRAWING No DRAWING TITLE
 M-0111 LEVEL 10 PLAN

REV DATE:
 D 28/02/20

SCALE BAR:
 0 1 2 5 10

empire | GEOCON



Whilst we endeavor to ensure the contents of these plans are correct at the time of printing, the information they contain is to be used as a guide only. Furnishings and floor coverings are for illustrative purposes only and are not shown to scale nor included in the stated price (unless expressly included). The columns shown may vary in diameter throughout the building. Area calculations are for gross floor area and are measured to the exterior face of end walls, the centreline of party walls & the exterior face of common area walls. The plans were completed prior to the completion of final design, engineering and construction of the building. Therefore design, engineering, dimensions, fittings and specifications are subject to change without notice in accordance with the provisions of the Contract of Sale.

THE ESTABLISHMENT



LEVEL 11 PLAN

BLOCK 6, SECTION 224, GUNGAHLIN
 DRAWING No DRAWING TITLE
 M-0112 LEVEL 11 PLAN

REV DATE:
 D 28/02/20

SCALE BAR:
 0 1 2 5 10

empire | GEOCON



Whilst we endeavor to ensure the contents of these plans are correct at the time of printing, the information they contain is to be used as a guide only. Furnishings and floor coverings are for illustrative purposes only and are not shown to scale nor included in the stated price (unless expressly included). The columns shown may vary in diameter throughout the building. Area calculations are for gross floor area and are measured to the exterior face of end walls, the centreline of party walls & the exterior face of common area walls. The plans were completed prior to the completion of final design, engineering and construction of the building. Therefore design, engineering, dimensions, fittings and specifications are subject to change without notice in accordance with the provisions of the Contract of Sale.

THE ESTABLISHMENT



LEVEL 12 PLAN

BLOCK 6, SECTION 224, GUNGAHLIN
 DRAWING No DRAWING TITLE
 M-0113 LEVEL 12 PLAN

REV DATE:
 D 28/02/20

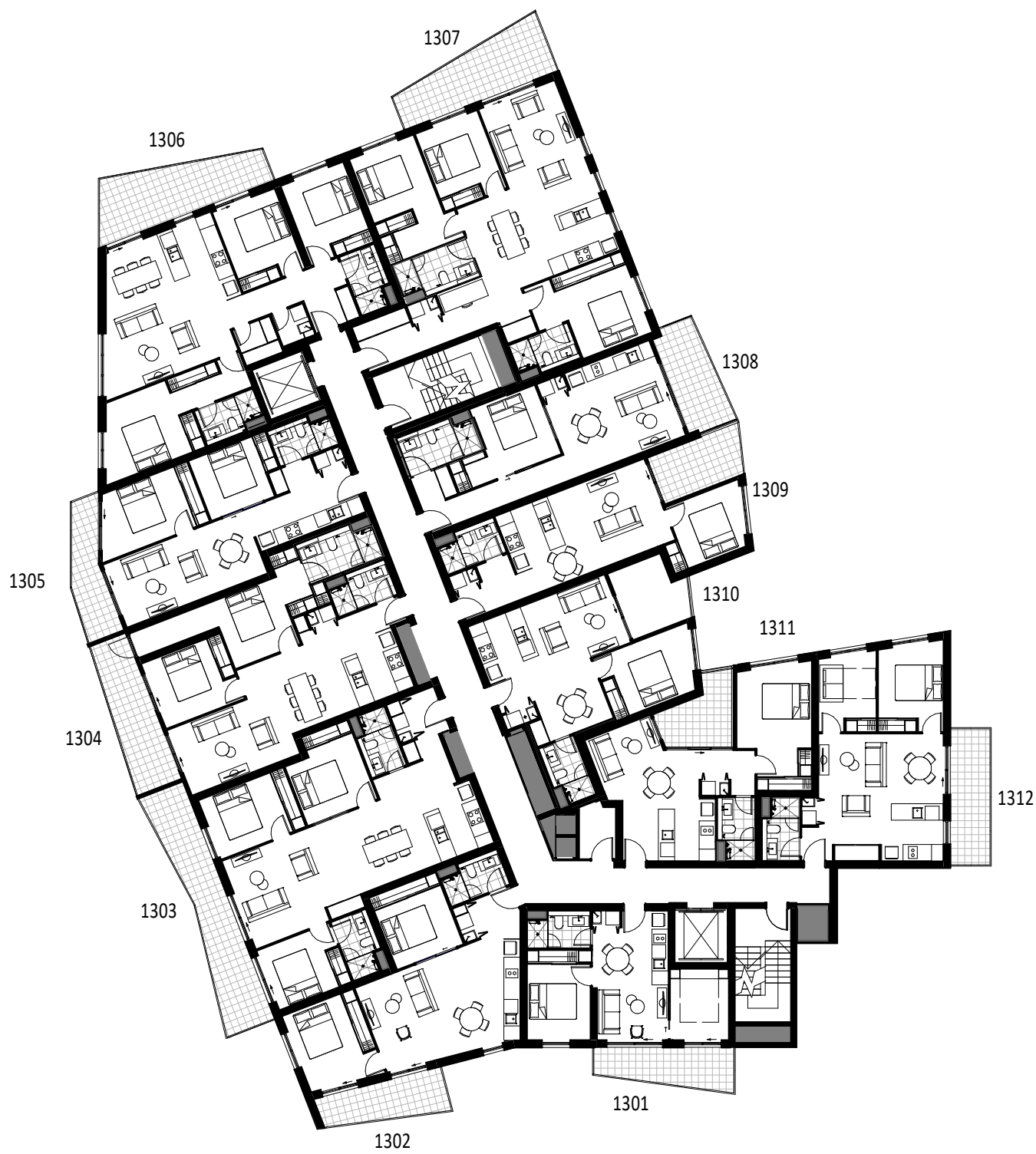
SCALE BAR:
 0 1 2 5 10

empire | GEOCON



Whilst we endeavor to ensure the contents of these plans are correct at the time of printing, the information they contain is to be used as a guide only. Furnishings and floor coverings are for illustrative purposes only and are not shown to scale nor included in the stated price (unless expressly included). The columns shown may vary in diameter throughout the building. Area calculations are for gross floor area and are measured to the exterior face of end walls, the centreline of party walls & the exterior face of common area walls. The plans were completed prior to the completion of final design, engineering and construction of the building. Therefore design, engineering, dimensions, fittings and specifications are subject to change without notice in accordance with the provisions of the Contract of Sale.

THE ESTABLISHMENT



LEVEL 13 PLAN

BLOCK 6, SECTION 224, GUNGAHLIN
DRAWING No DRAWING TITLE
M-0114 LEVEL 13 PLAN

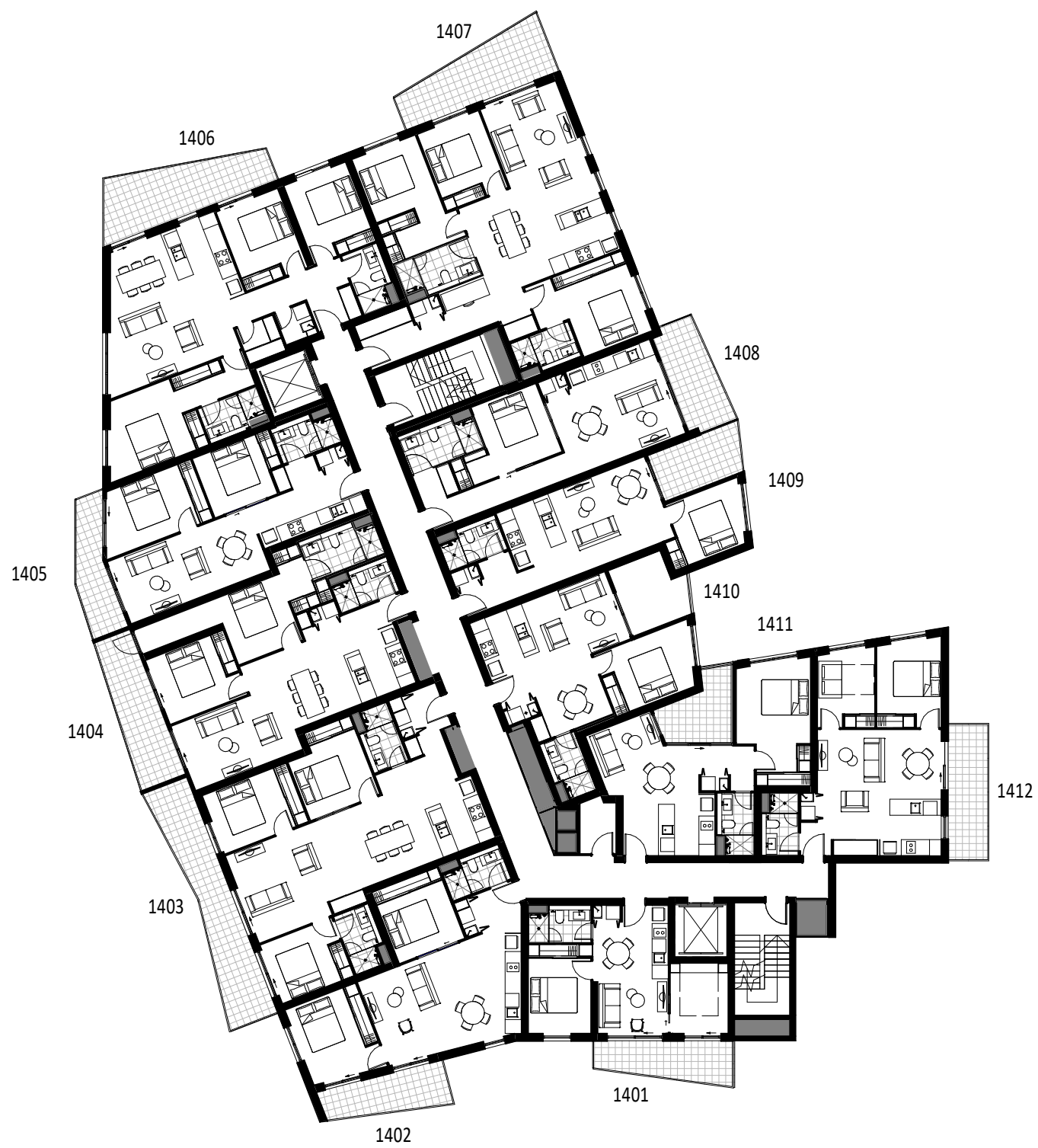
REV DATE:
D 28/02/20

SCALE BAR:
0 1 2 5 10

empire | GEOCON

Whilst we endeavor to ensure the contents of these plans are correct at the time of printing, the information they contain is to be used as a guide only. Furnishings and floor coverings are for illustrative purposes only and are not shown to scale nor included in the stated price (unless expressly included). The columns shown may vary in diameter throughout the building. Area calculations are for gross floor area and are measured to the exterior face of end walls, the centreline of party walls & the exterior face of common area walls. The plans were completed prior to the completion of final design, engineering and construction of the building. Therefore design, engineering, dimensions, fittings, finishes and specifications are subject to change without notice in accordance with the provisions of the Contract of Sale.

THE ESTABLISHMENT



LEVEL 14 PLAN

BLOCK 6, SECTION 224, GUNGAHLIN
DRAWING No DRAWING TITLE
M-0115 LEVEL 14 PLAN

REV DATE:
D 28/02/20

SCALE BAR:
0 1 2 5 10

empire | GEOCON

Whilst we endeavor to ensure the contents of these plans are correct at the time of printing, the information they contain is to be used as a guide only. Furnishings and floor coverings are for illustrative purposes only and are not shown to scale nor included in the stated price (unless expressly included). The columns shown may vary in diameter throughout the building. Area calculations are for gross floor area and are measured to the exterior face of end walls, the centreline of party walls & the exterior face of common area walls. The plans were completed prior to the completion of final design, engineering and construction of the building. Therefore design, engineering, dimensions, fittings and specifications are subject to change without notice in accordance with the provisions of the Contract of Sale.

