

BUILDING ONE



WO  
VA



# BE THE FIRST. MAKE YOUR MOVE.



## Welcome to the first tower in the iconic new WOVA precinct.

Welcome to WOVA. A vibrant urban precinct nestled in the heart of Canberra's rapidly-reawakening inner South. Perfectly positioned within the multi-billion dollar regeneration of the old Woden Town Centre, yet just a 10-minute drive from the City Centre.

A golden opportunity brimming with high-end amenity, abundant transport options and once-in-a-generation value, WOVA redefines the possibilities of contemporary community living.

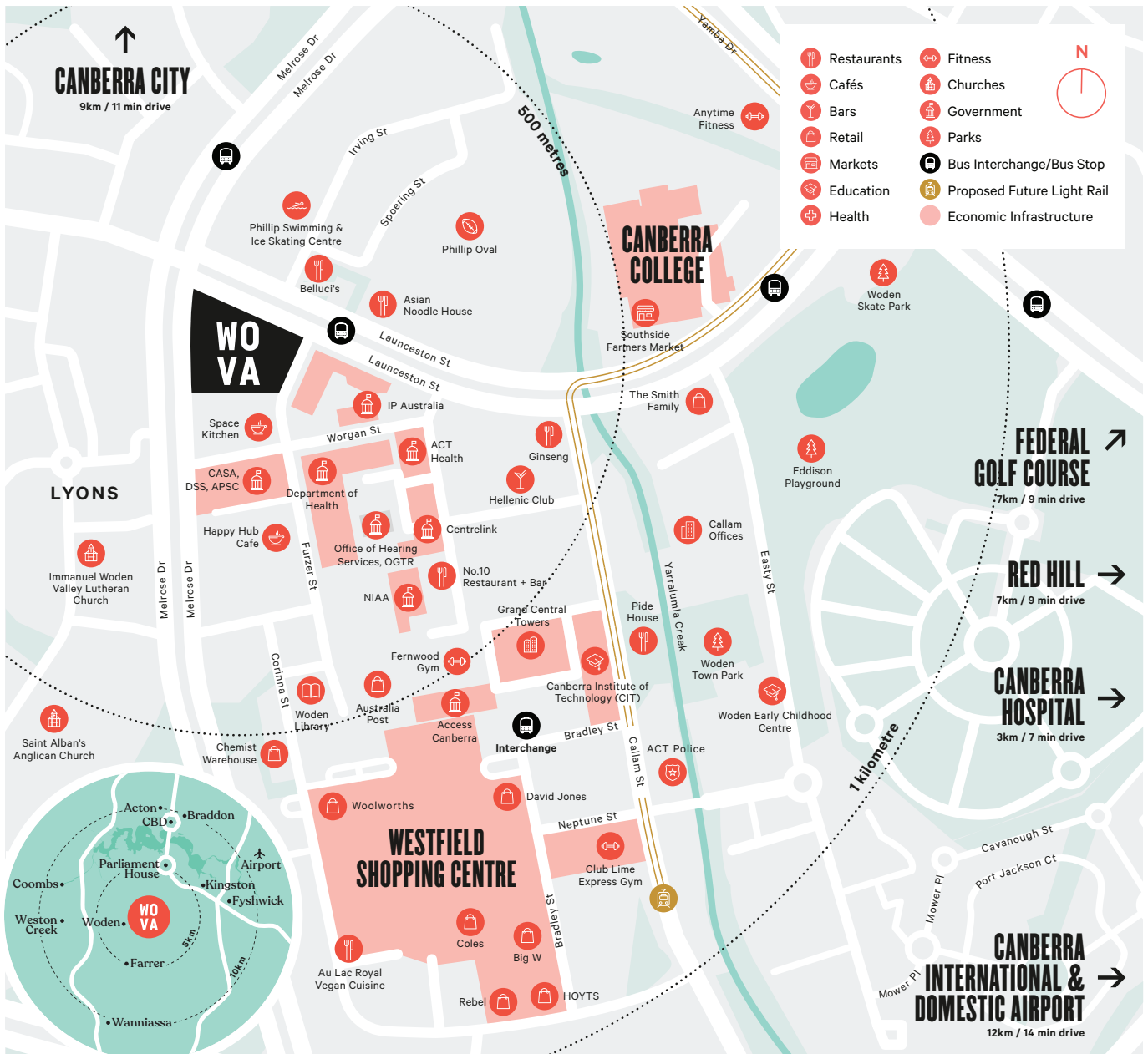
# Amenities

## PRIVATE AMENITY

- Lap pool & sauna
- Resident private cinema
- Co-working spaces
- Contemplative rooftop terrace
- Fitness studio
- Bar club lounge
- Chef's kitchen & dining room

## PRECINCT AMENITY

- All fresco restaurants & cafés
- 2,320sqm of mixed retail and F&B
- 3,370sqm of landscaped gardens
- 4 level carpark – 1,000 car spaces
- 53 hotel rooms



BUILDING ONE

# Building Summary

Welcome to a thriving residential & mixed-use community precinct with a beating heart.

221

138

1 BEDROOM

16

LEVELS

83

2 BEDROOM

429sqm

COMBINED RETAIL

53

HOTEL ROOMS

PROJECT PARTNERS

# Acclaimed creators

The new WOVA precinct represents years of collaborative energy, ideas and creativity. It really does rewrite the script of what's possible and is something we're all infinitely proud of.



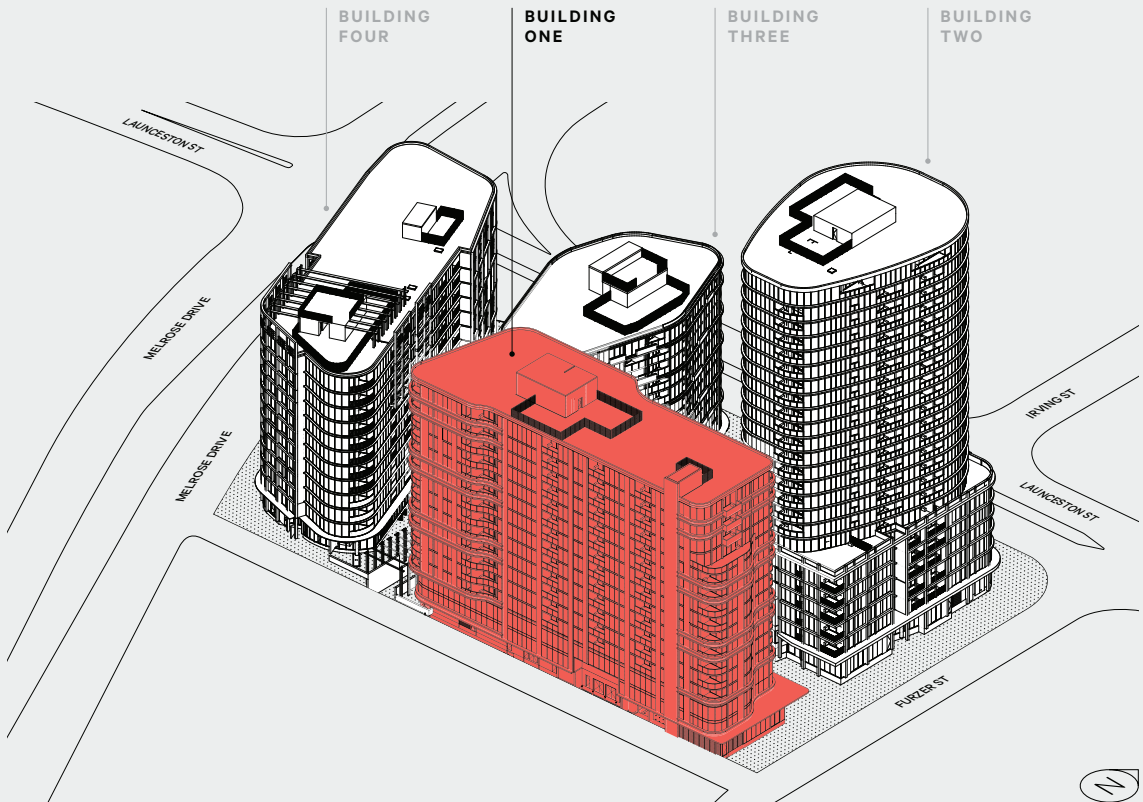
FENDER  
KATSALIDIS

OCULUS

OCULUS  
LANDSCAPE



HOTEL BRAND  
AND OPERATOR



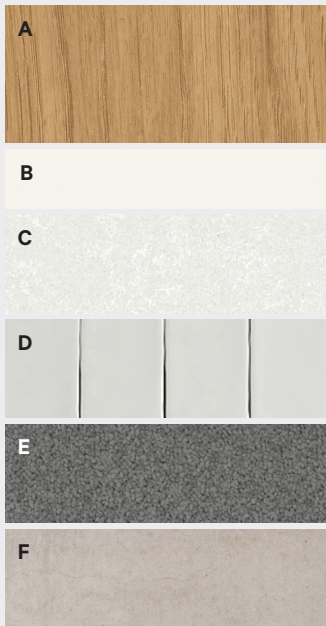
# Interior Schemes

Select from three modern and timeless colour schemes.

## 01 SPRUCE

Inviting and optimistic.  
A warm colour palette brought to life by natural textures and timber tones.

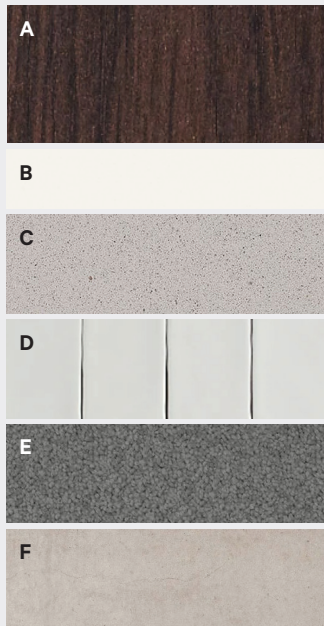
- A TIMBER GRAIN LAMINATE**  
Kitchen – Under Bench & Towers  
Bathroom – Vanity / Shelf
- B LAMINATE**  
Kitchen – Upper Cupboards
- C STONE**  
Kitchen – Benchtop
- D WALL TILES**  
Kitchen – Splashback  
Bathroom – General Wall Tile
- E CUT PILE CARPET**  
Bedrooms, Living & Dining
- F FLOOR TILE**  
Kitchen & Bathrooms



## 02 EBONY

A rich, dark blend of elegance and aspiration. Bold contrasts and dramatic features set an atmospheric scene.

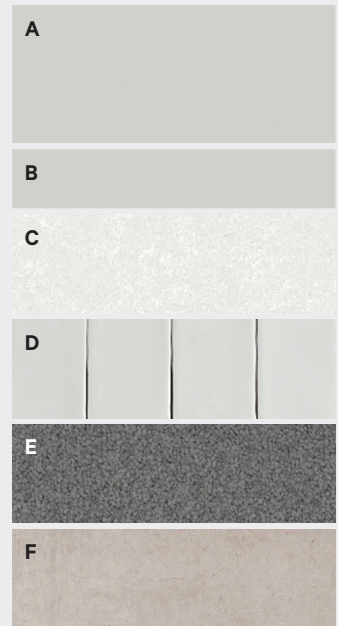
- A TIMBER GRAIN LAMINATE**  
Kitchen – Under Bench & Towers  
Bathroom – Vanity / Shelf
- B LAMINATE**  
Kitchen – Upper Cupboards
- C STONE**  
Kitchen – Benchtop
- D WALL TILES**  
Kitchen – Splashback  
Bathroom – General Wall Tile
- E CUT PILE CARPET**  
Bedrooms, Living & Dining
- F FLOOR TILE**  
Kitchen & Bathrooms



## 03 IVORY

Light & bright, airy & refreshingly tranquil. A subtly sophisticated scheme that maximises light and creates a sense of calm.

- A LAMINATE**  
Kitchen – Under Bench & Towers
- B LAMINATE**  
Kitchen – Shelves
- C STONE**  
Kitchen – Benchtop
- D WALL TILES**  
Kitchen – Splashback  
Bathroom – General Wall Tile
- E CUT PILE CARPET**  
Bedrooms, Living & Dining
- F FLOOR TILE**  
Kitchen & Bathrooms



Purchasers are advised that the finishes proposed for use in the apartments include natural materials such as timber and reconstituted stone products. Natural materials may display characteristics which may vary from the samples shown on the display colour boards due to the intrinsic nature of such naturally occurring materials. Light fittings, GPO's, access control system, TV/cable outlets, telecommunication outlets and bathroom accessories are subject detailed architectural design. Minor variations in location and quantities of these items may occur following detailed architectural design. All product ranges, models and suppliers are subject to change.

# 1 & 2 Bedroom Inclusions

Here's what you need to know about your brand new apartment.

## FLOORPLAN ATTRIBUTES

- Durable and stylish finishes
- Energy efficient LED lighting throughout
- Reverse cycle airconditioning units to each apartment
- Spacious balconies to each apartment
- Flexible floorplans maximising sunlight
- Individual and secure storage cages

## LAUNDRY

- Laundry tub

## KITCHEN

- Stone benchtops
- SMEG electric oven, ceramic cooktop, dishwasher and undermount rangehood

## BATHROOMS & ENSUITE

- Full height tiling to shower recess and basin/toilet wall only. Skirting tiles elsewhere
- Semi frameless shower screen and door
- Custom joinery

## BUILDING ONE

# Pricing Summary

## 1 BEDROOM

FROM \$299,900

## 2 BEDROOM

FROM \$494,900

BED	NUMBER OF UNITS	ESTIMATED RENTAL	AVERAGE ESTIMATED STRATA LEVIES	WATER	RATES	LAND TAX	AVERAGE STAMP DUTY
1 BED	138	\$390 - \$470	\$2,303	\$644	\$1,450	\$1,550	\$8,719
2 BED	83	\$510 - \$590	\$3,179	\$644	\$1,450	\$1,550	\$13,954

The above figures are in \$AUD and were last updated on Feb 2021. This information has been prepared for general purposes only. Figures are estimated only and subject to change. Purchasers should make their own enquiries in respect of the information contained in this document and must not rely on it.

**REVITALISED.  
RE-ENERGISED.  
REDEFINED.  
RENEWED.  
REIMAGINED.  
WODEN  
REVAMPED.**

For more information  
Contact us on 1300 97 97 57  
[wova.geocon.com.au](http://wova.geocon.com.au)



**GEOCON**

Disclaimer WOVA ('the Development') The information, images and plans representing the Development in this brochure are for illustration only and are subject to change. Please contact 1300 97 97 57 for the most up to date plans before entering into any contract for sale. Illustrations and plans are the designer's impressions only and may not be an accurate representation of the development, or be to scale. Purchasers should rely on their own enquiries and information in their contract for sale before making any commitments. This brochure does not constitute an offer or contract. Licence no 18401809. Min EER 6