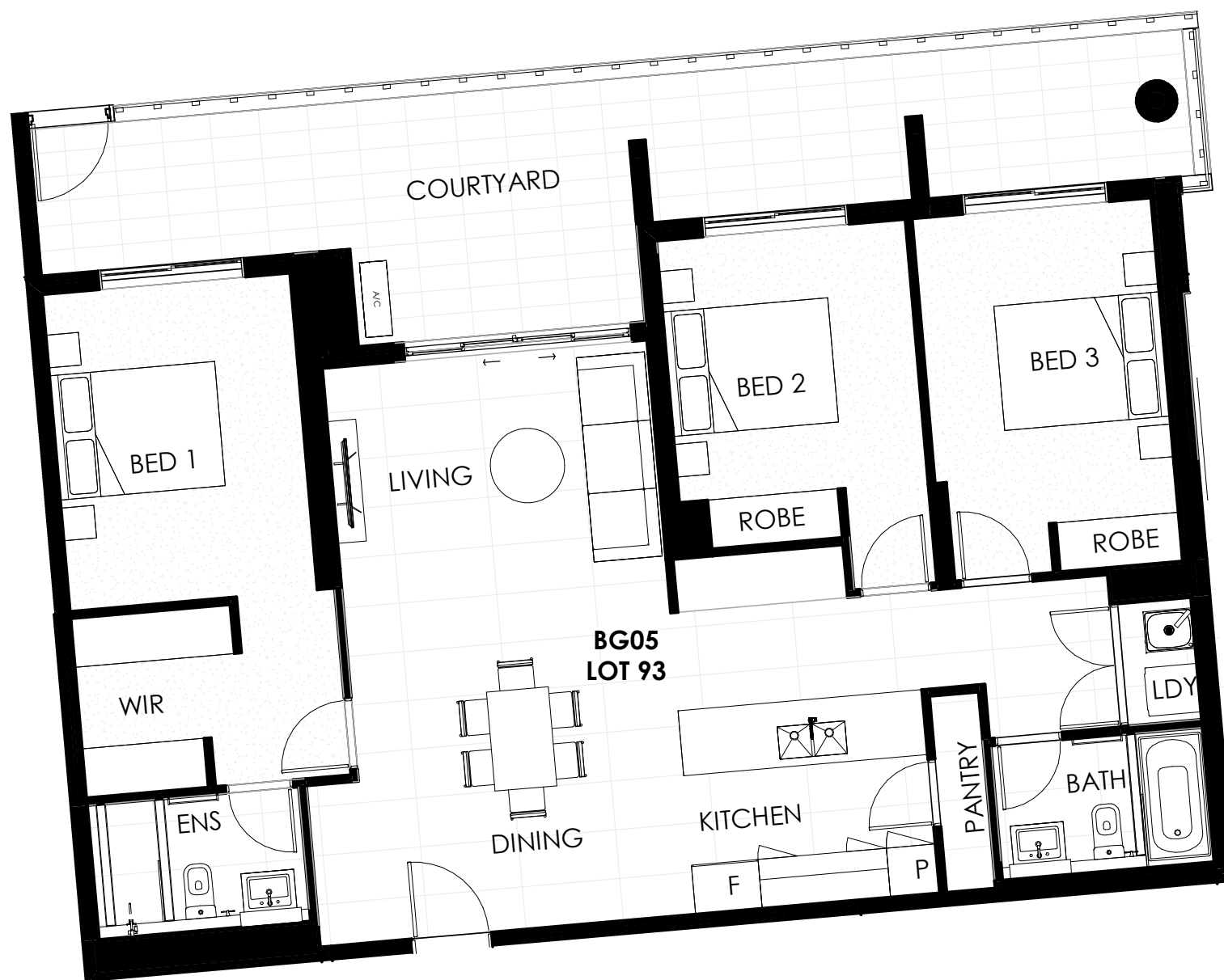


M Unit Type - 048

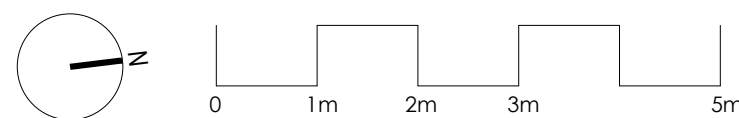
BUILDING B

BG05
BG08

2



LOCATION PLAN



JASMINE
SCHOFIELD GARDENS

BUILDING B

UNIT BG05

LOT 93



3



2



2

INTERNAL AREA 104 m²

EXTERNAL AREA 29 m²

TOTAL AREA 133 m²

Disclaimer: This plan is for marketing purposes only, is not to scale, will not form part of any contract for the sale of the property and does not define what is being sold and purchased under any such contract. The plan was produced prior to construction, and any dimensions, areas fittings, finishes and specifications referred to in the plan are subject to change without notice. The sale of the property will exclude any furniture, furnishings, plants and vegetation, chattels and non-fixed items depicted in the plan, and the positioning of any such items in the plan cannot be relied upon as an indication of the final positioning of any power points, TV connections points and the like. For details of the inclusions in the sale, prospective buyers must refer to the Schedule of Finishes and any other provisions expressly stated in the contact for sale. All graphics, including but not limited to tile layout, balustrades, and bedroom opaque window location are indicative only. Bulkheads for services are not depicted. MARKETING FLOOR PLAN - REV C - OCTOBER 2024





JASMINE
SCHOFIELD GARDENS

BUILDING B

UNIT B505

LOT 169

LIVABLE



3



2

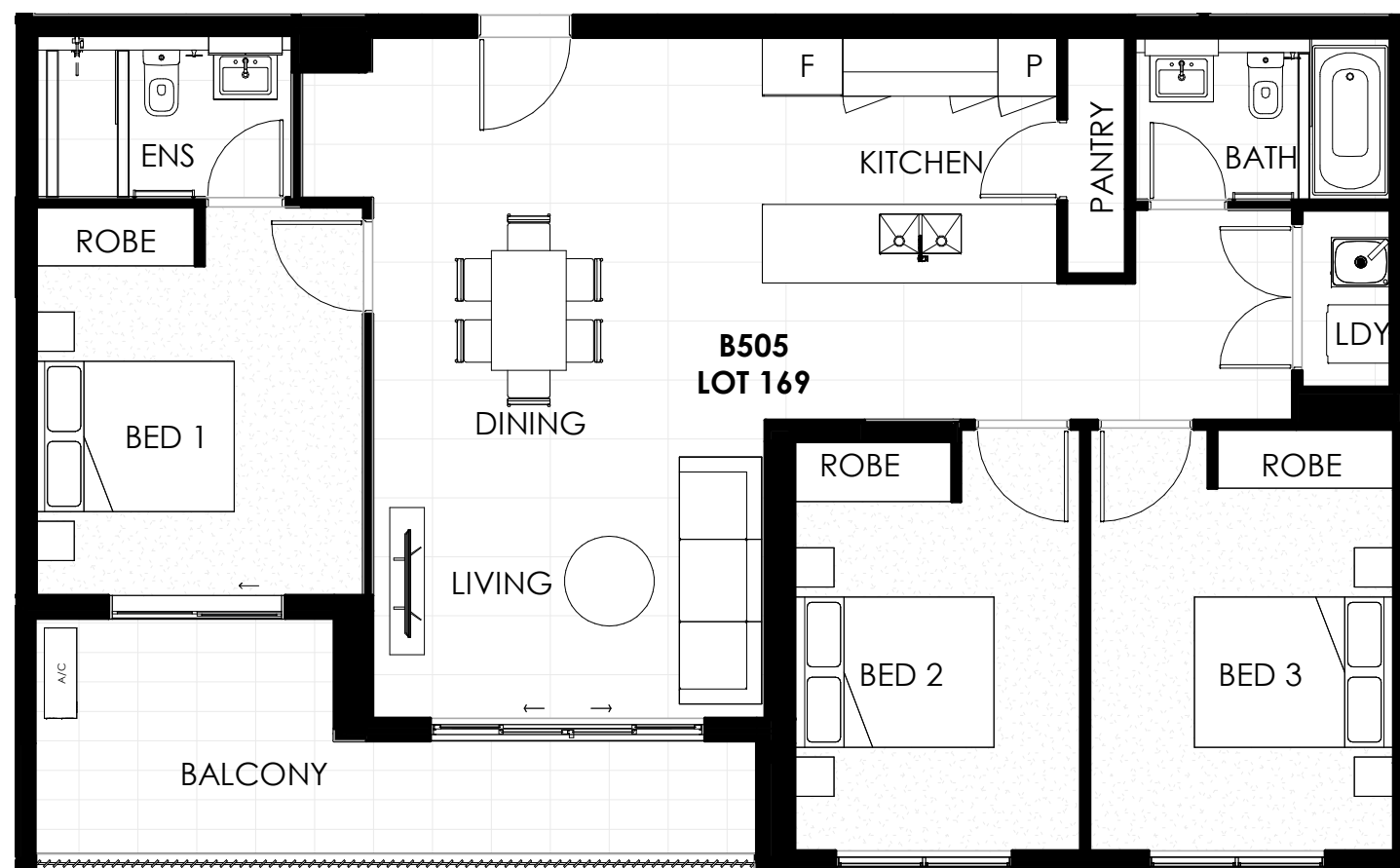


2

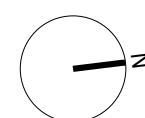
INTERNAL AREA 97 m²

EXTERNAL AREA 12 m²

TOTAL AREA 109 m²



LOCATION PLAN



0 1m 2m 3m 5m

Disclaimer: This plan is for marketing purposes only, is not to scale, will not form part of any contract for the sale of the property and does not define what is being sold and purchased under any such contract. The plan was produced prior to construction, and any dimensions, areas fittings, finishes and specifications referred to in the plan are subject to change without notice. The sale of the property will exclude any furniture, furnishings, plants and vegetation, chattels and non-fixed items depicted in the plan, and the positioning of any such items in the plan cannot be relied upon as an indication of the final positioning of any power points, TV connections points and the like. For details of the inclusions in the sale, prospective buyers must refer to the Schedule of Finishes and any other provisions expressly stated in the contact for sale. All graphics, including but not limited to tile layout, balustrades, and bedroom opaque window location are indicative only. Bulkheads for services are not depicted. MARKETING FLOOR PLAN - REV C - OCTOBER 2024

ALAND



JASMINE
SCHOFIELD GARDENS

BUILDING B

UNIT B501

LOT 165

LIVABLE



3



2

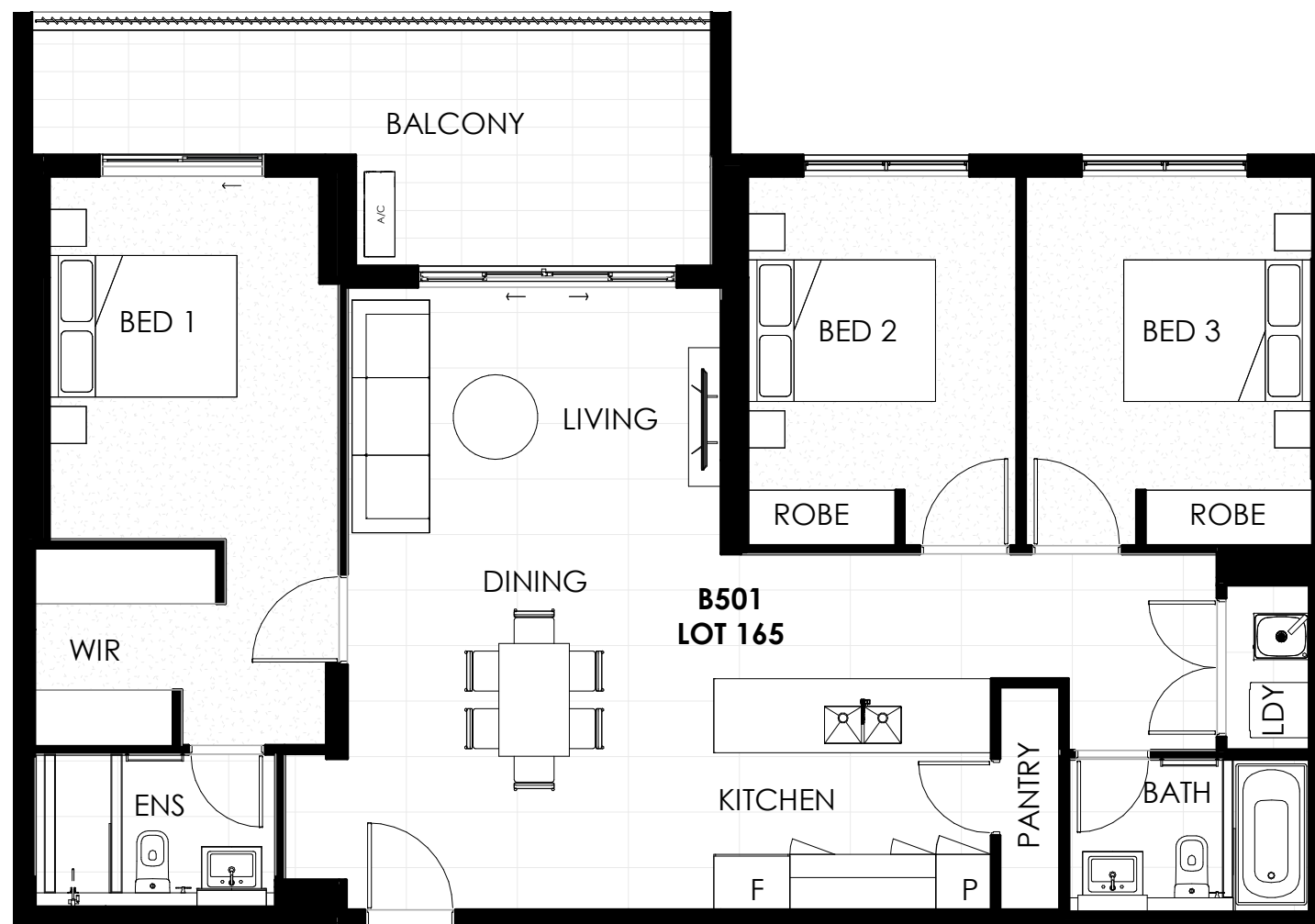


2

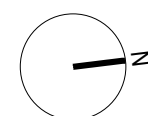
INTERNAL AREA 101 m²

EXTERNAL AREA 14 m²

TOTAL AREA 115 m²



LOCATION PLAN



0 1m 2m 3m 5m

Disclaimer: This plan is for marketing purposes only, is not to scale, will not form part of any contract for the sale of the property and does not define what is being sold and purchased under any such contract. The plan was produced prior to construction, and any dimensions, areas fittings, finishes and specifications referred to in the plan are subject to change without notice. The sale of the property will exclude any furniture, furnishings, plants and vegetation, chattels and non-fixed items depicted in the plan, and the positioning of any such items in the plan cannot be relied upon as an indication of the final positioning of any power points, TV connections points and the like. For details of the inclusions in the sale, prospective buyers must refer to the Schedule of Finishes and any other provisions expressly stated in the contact for sale. All graphics, including but not limited to tile layout, balustrades, and bedroom opaque window location are indicative only. Bulkheads for services are not depicted. MARKETING FLOOR PLAN - REV C - OCTOBER 2024

ALAND

M Unit Type - 068

BUILDING B

B413

B505

2



JASMINE
SCHOFIELD GARDENS

BUILDING B

UNIT B413

LOT 161

LIVABLE



3



2

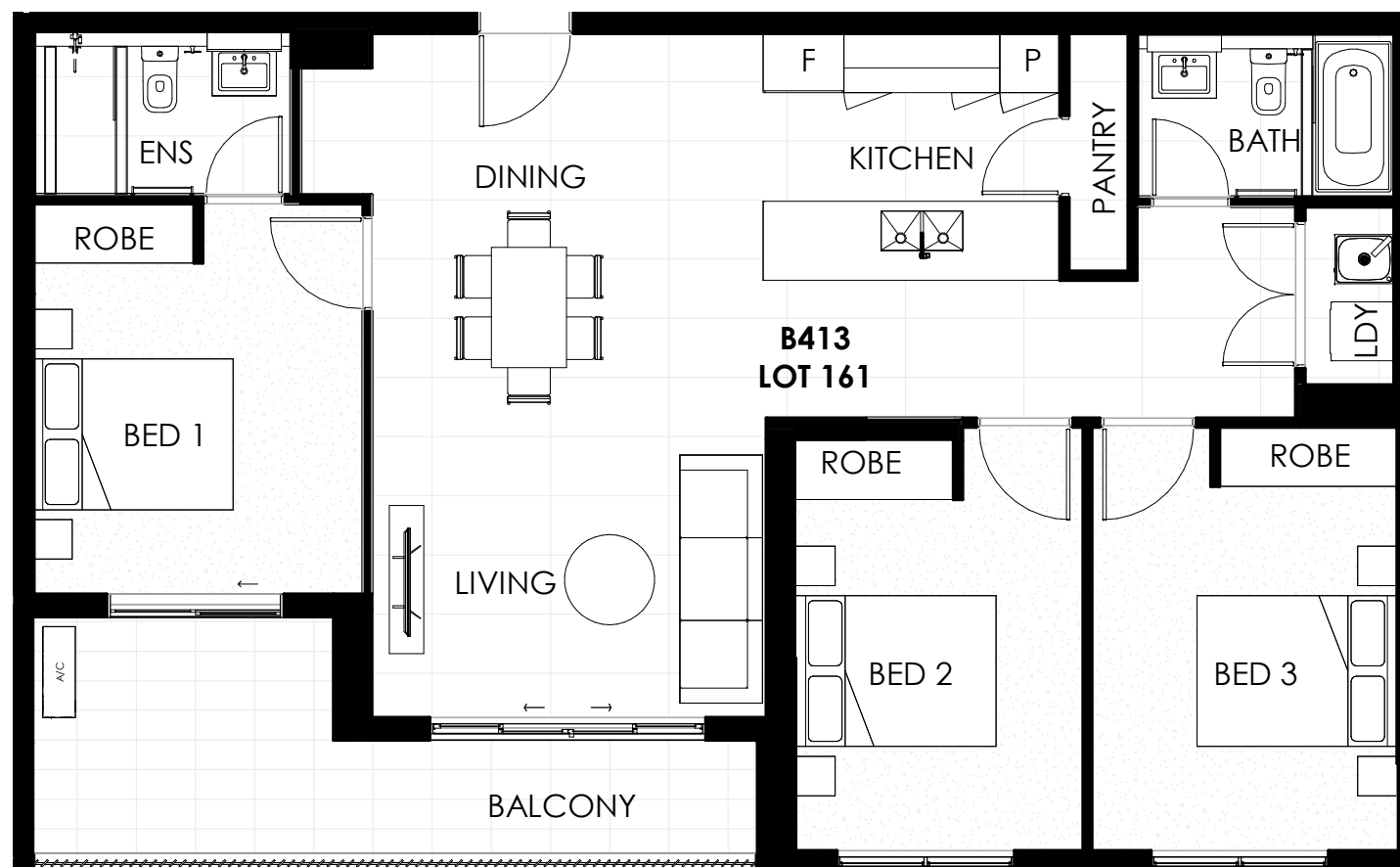


2

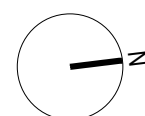
INTERNAL AREA 97 m²

EXTERNAL AREA 12 m²

TOTAL AREA 109 m²



LOCATION PLAN



0 1m 2m 3m 5m

Disclaimer: This plan is for marketing purposes only, is not to scale, will not form part of any contract for the sale of the property and does not define what is being sold and purchased under any such contract. The plan was produced prior to construction, and any dimensions, areas fittings, finishes and specifications referred to in the plan are subject to change without notice. The sale of the property will exclude any furniture, furnishings, plants and vegetation, chattels and non-fixed items depicted in the plan, and the positioning of any such items in the plan cannot be relied upon as an indication of the final positioning of any power points, TV connections points and the like. For details of the inclusions in the sale, prospective buyers must refer to the Schedule of Finishes and any other provisions expressly stated in the contact for sale. All graphics, including but not limited to tile layout, balustrades, and bedroom opaque window location are indicative only. Bulkheads for services are not depicted. MARKETING FLOOR PLAN - REV C - OCTOBER 2024

ALAND



JASMINE
SCHOFIELD GARDENS

BUILDING B

UNIT B409

LOT 157

LIVABLE



3



2



2

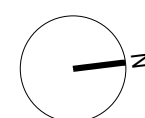
INTERNAL AREA 101 m²

EXTERNAL AREA 14 m²

TOTAL AREA 115 m²



LOCATION PLAN



0 1m 2m 3m 5m

Disclaimer: This plan is for marketing purposes only, is not to scale, will not form part of any contract for the sale of the property and does not define what is being sold and purchased under any such contract. The plan was produced prior to construction, and any dimensions, areas fittings, finishes and specifications referred to in the plan are subject to change without notice. The sale of the property will exclude any furniture, furnishings, plants and vegetation, chattels and non-fixed items depicted in the plan, and the positioning of any such items in the plan cannot be relied upon as an indication of the final positioning of any power points, TV connections points and the like. For details of the inclusions in the sale, prospective buyers must refer to the Schedule of Finishes and any other provisions expressly stated in the contact for sale. All graphics, including but not limited to tile layout, balustrades, and bedroom opaque window location are indicative only. Bulkheads for services are not depicted. MARKETING FLOOR PLAN - REV C - OCTOBER 2024

ALAND

M Unit Type - 067

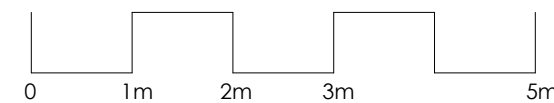
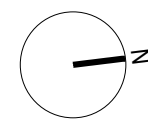
BUILDING B

B408

1



LOCATION PLAN



JASMINE
SCHOFIELD GARDENS

BUILDING B

UNIT B408

LOT 156



3



2



2

INTERNAL AREA 97 m²

EXTERNAL AREA 37 m²

TOTAL AREA 134 m²

Disclaimer: This plan is for marketing purposes only, is not to scale, will not form part of any contract for the sale of the property and does not define what is being sold and purchased under any such contract. The plan was produced prior to construction, and any dimensions, areas fittings, finishes and specifications referred to in the plan are subject to change without notice. The sale of the property will exclude any furniture, furnishings, plants and vegetation, chattels and non-fixed items depicted in the plan, and the positioning of any such items in the plan cannot be relied upon as an indication of the final positioning of any power points, TV connections points and the like. For details of the inclusions in the sale, prospective buyers must refer to the Schedule of Finishes and any other provisions expressly stated in the contact for sale. All graphics, including but not limited to tile layout, balustrades, and bedroom opaque window location are indicative only. Bulkheads for services are not depicted. MARKETING FLOOR PLAN - REV C - OCTOBER 2024





JASMINE
SCHOFIELD GARDENS

BUILDING B

UNIT B315

LOT 145

LIVABLE



3



2

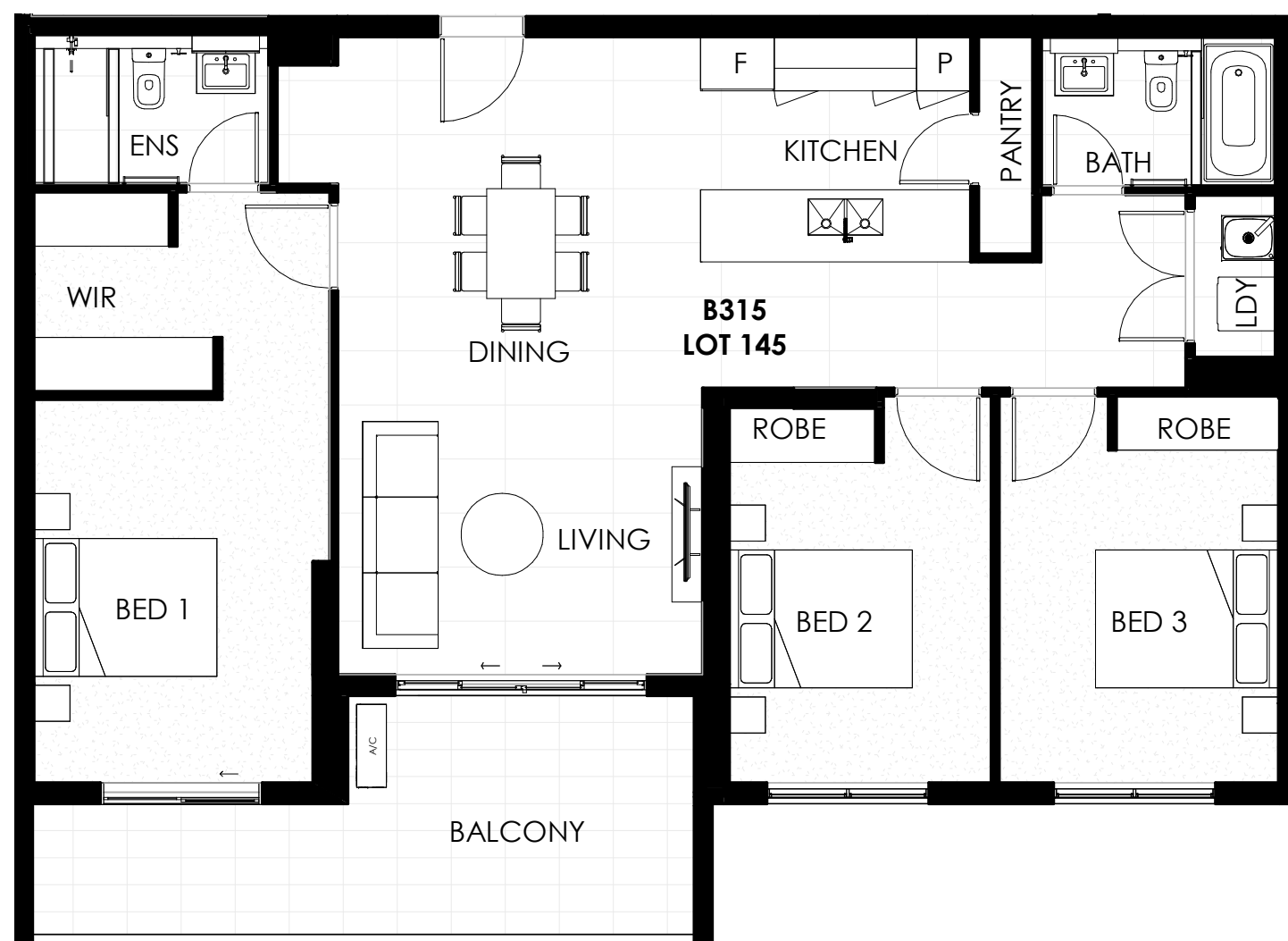


2

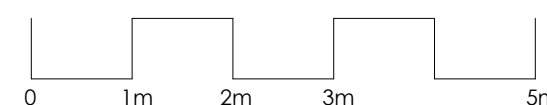
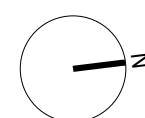
INTERNAL AREA 106 m²

EXTERNAL AREA 15 m²

TOTAL AREA 121 m²



LOCATION PLAN



Disclaimer: This plan is for marketing purposes only, is not to scale, will not form part of any contract for the sale of the property and does not define what is being sold and purchased under any such contract. The plan was produced prior to construction, and any dimensions, areas fittings, finishes and specifications referred to in the plan are subject to change without notice. The sale of the property will exclude any furniture, furnishings, plants and vegetation, chattels and non-fixed items depicted in the plan, and the positioning of any such items in the plan cannot be relied upon as an indication of the final positioning of any power points, TV connections points and the like. For details of the inclusions in the sale, prospective buyers must refer to the Schedule of Finishes and any other provisions expressly stated in the contact for sale. All graphics, including but not limited to tile layout, balustrades, and bedroom opaque window location are indicative only. Bulkheads for services are not depicted. MARKETING FLOOR PLAN - REV C - OCTOBER 2024

ALAND



JASMINE
SCHOFIELD GARDENS

BUILDING B

UNIT B311

LOT 141

LIVABLE



3



2



2

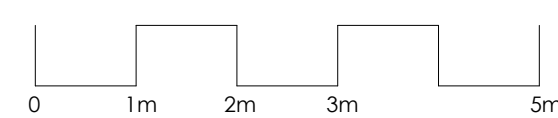
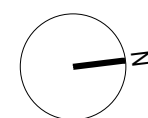
INTERNAL AREA 101 m²

EXTERNAL AREA 14 m²

TOTAL AREA 115 m²



LOCATION PLAN



Disclaimer: This plan is for marketing purposes only, is not to scale, will not form part of any contract for the sale of the property and does not define what is being sold and purchased under any such contract. The plan was produced prior to construction, and any dimensions, areas fittings, finishes and specifications referred to in the plan are subject to change without notice. The sale of the property will exclude any furniture, furnishings, plants and vegetation, chattels and non-fixed items depicted in the plan, and the positioning of any such items in the plan cannot be relied upon as an indication of the final positioning of any power points, TV connections points and the like. For details of the inclusions in the sale, prospective buyers must refer to the Schedule of Finishes and any other provisions expressly stated in the contact for sale. All graphics, including but not limited to tile layout, balustrades, and bedroom opaque window location are indicative only. Bulkheads for services are not depicted. MARKETING FLOOR PLAN - REV C - OCTOBER 2024

ALAND



JASMINE
SCHOFIELD GARDENS

BUILDING B

UNIT B310

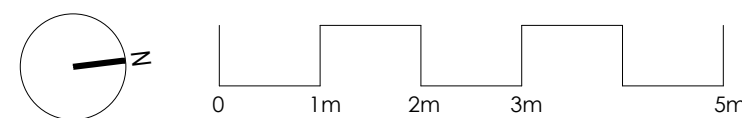
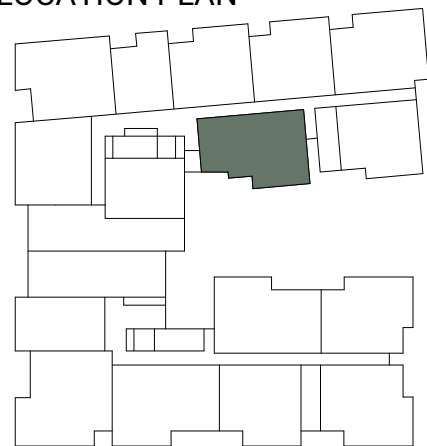
LOT 140



INTERNAL AREA	95 m ²
EXTERNAL AREA	14 m ²
TOTAL AREA	109 m ²



LOCATION PLAN



Disclaimer: This plan is for marketing purposes only, is not to scale, will not form part of any contract for the sale of the property and does not define what is being sold and purchased under any such contract. The plan was produced prior to construction, and any dimensions, areas fittings, finishes and specifications referred to in the plan are subject to change without notice. The sale of the property will exclude any furniture, furnishings, plants and vegetation, chattels and non-fixed items depicted in the plan, and the positioning of any such items in the plan cannot be relied upon as an indication of the final positioning of any power points, TV connections points and the like. For details of the inclusions in the sale, prospective buyers must refer to the Schedule of Finishes and any other provisions expressly stated in the contact for sale. All graphics, including but not limited to tile layout, balustrades, and bedroom opaque window location are indicative only. Bulkheads for services are not depicted. MARKETING FLOOR PLAN - REV C - OCTOBER 2024

ALAND

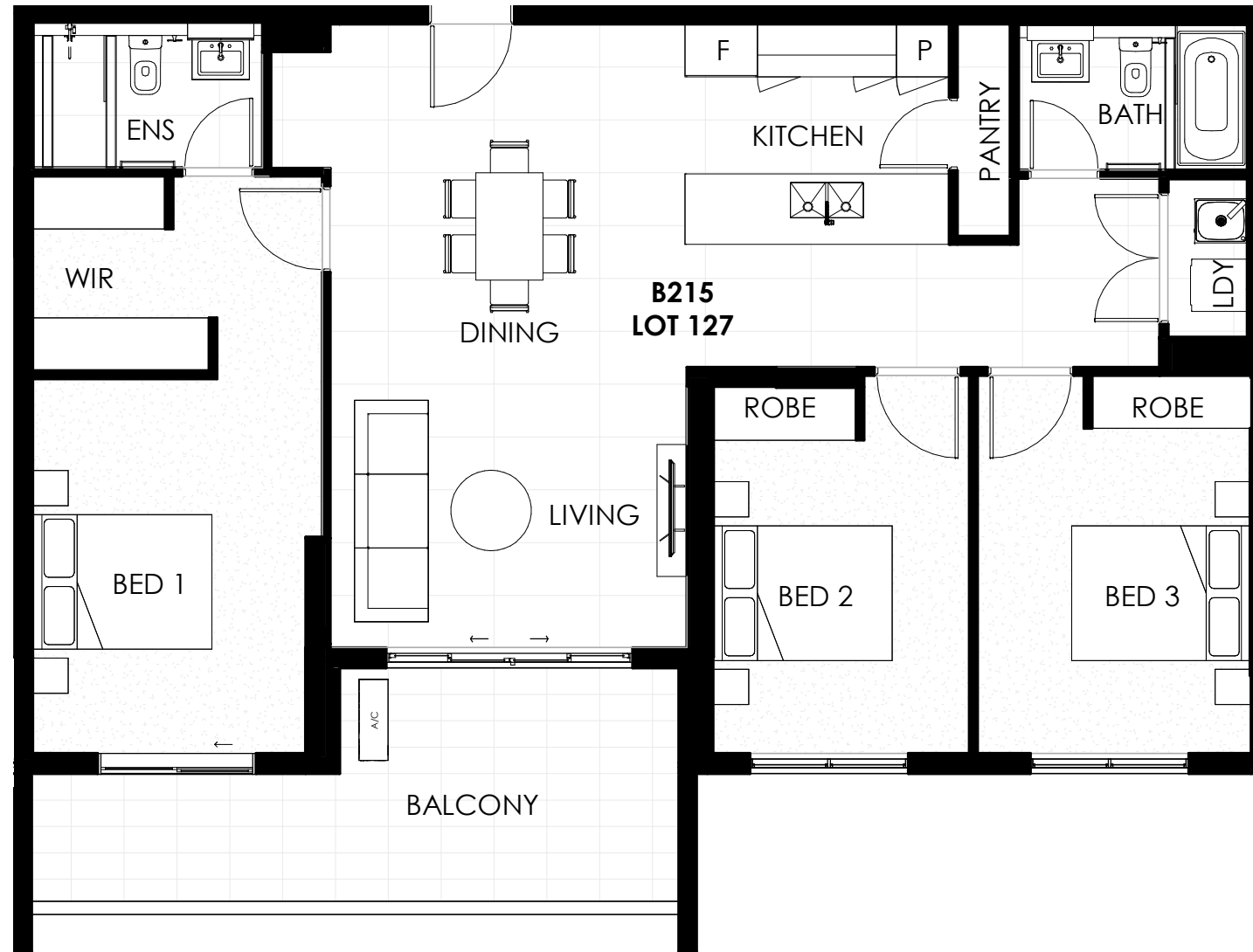
M Unit Type - 063

BUILDING B

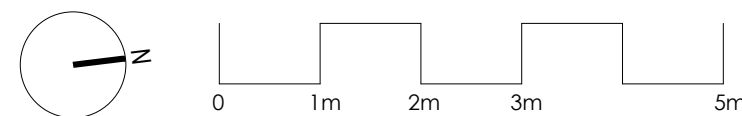
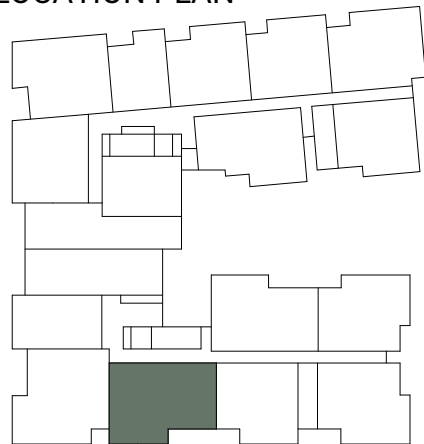
B215

B315

2



LOCATION PLAN



JASMINE
SCHOFIELD GARDENS

BUILDING B

UNIT B215

LOT 127

LIVABLE



3



2



2

INTERNAL AREA 106 m²

EXTERNAL AREA 15 m²

TOTAL AREA 121 m²

Disclaimer: This plan is for marketing purposes only, is not to scale, will not form part of any contract for the sale of the property and does not define what is being sold and purchased under any such contract. The plan was produced prior to construction, and any dimensions, areas fittings, finishes and specifications referred to in the plan are subject to change without notice. The sale of the property will exclude any furniture, furnishings, plants and vegetation, chattels and non-fixed items depicted in the plan, and the positioning of any such items in the plan cannot be relied upon as an indication of the final positioning of any power points, TV connections points and the like. For details of the inclusions in the sale, prospective buyers must refer to the Schedule of Finishes and any other provisions expressly stated in the contact for sale. All graphics, including but not limited to tile layout, balustrades, and bedroom opaque window location are indicative only. Bulkheads for services are not depicted. MARKETING FLOOR PLAN - REV C - OCTOBER 2024

ALAND



JASMINE
SCHOFIELD GARDENS

BUILDING B

UNIT B210

LOT 122

LIVABLE



3



2



2

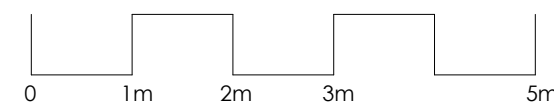
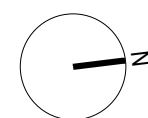
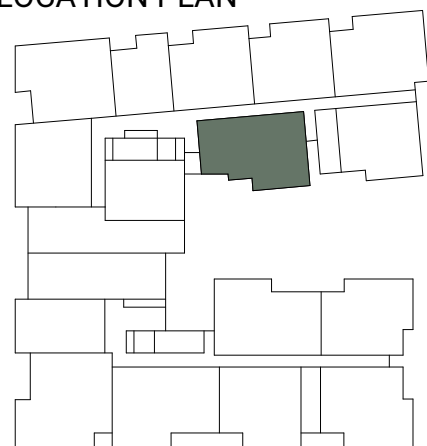
INTERNAL AREA 95 m²

EXTERNAL AREA 14 m²

TOTAL AREA 109 m²



LOCATION PLAN



Disclaimer: This plan is for marketing purposes only, is not to scale, will not form part of any contract for the sale of the property and does not define what is being sold and purchased under any such contract. The plan was produced prior to construction, and any dimensions, areas fittings, finishes and specifications referred to in the plan are subject to change without notice. The sale of the property will exclude any furniture, furnishings, plants and vegetation, chattels and non-fixed items depicted in the plan, and the positioning of any such items in the plan cannot be relied upon as an indication of the final positioning of any power points, TV connections points and the like. For details of the inclusions in the sale, prospective buyers must refer to the Schedule of Finishes and any other provisions expressly stated in the contact for sale. All graphics, including but not limited to tile layout, balustrades, and bedroom opaque window location are indicative only. Bulkheads for services are not depicted. MARKETING FLOOR PLAN - REV C - OCTOBER 2024

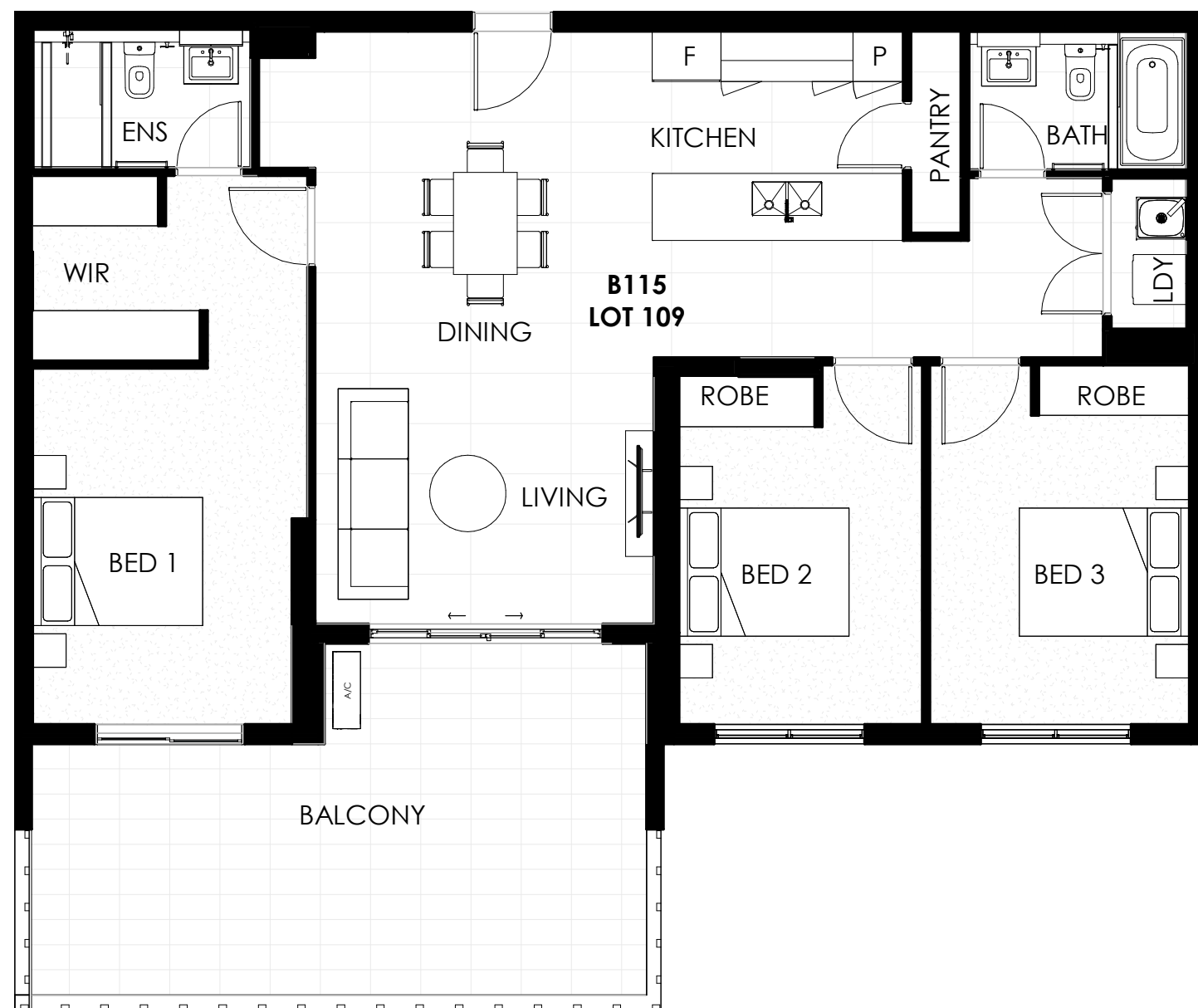
ALAND

M Unit Type - 058

BUILDING B

B115

1



LOCATION PLAN



JASMINE
SCHOFIELD GARDENS

BUILDING B

UNIT B115

LOT 109

LIVABLE



3



2



2

INTERNAL AREA 106 m²

EXTERNAL AREA 26 m²

TOTAL AREA 132 m²

Disclaimer: This plan is for marketing purposes only, is not to scale, will not form part of any contract for the sale of the property and does not define what is being sold and purchased under any such contract. The plan was produced prior to construction, and any dimensions, areas fittings, finishes and specifications referred to in the plan are subject to change without notice. The sale of the property will exclude any furniture, furnishings, plants and vegetation, chattels and non-fixed items depicted in the plan, and the positioning of any such items in the plan cannot be relied upon as an indication of the final positioning of any power points, TV connections points and the like. For details of the inclusions in the sale, prospective buyers must refer to the Schedule of Finishes and any other provisions expressly stated in the contact for sale. All graphics, including but not limited to tile layout, balustrades, and bedroom opaque window location are indicative only. Bulkheads for services are not depicted. MARKETING FLOOR PLAN - REV C - OCTOBER 2024

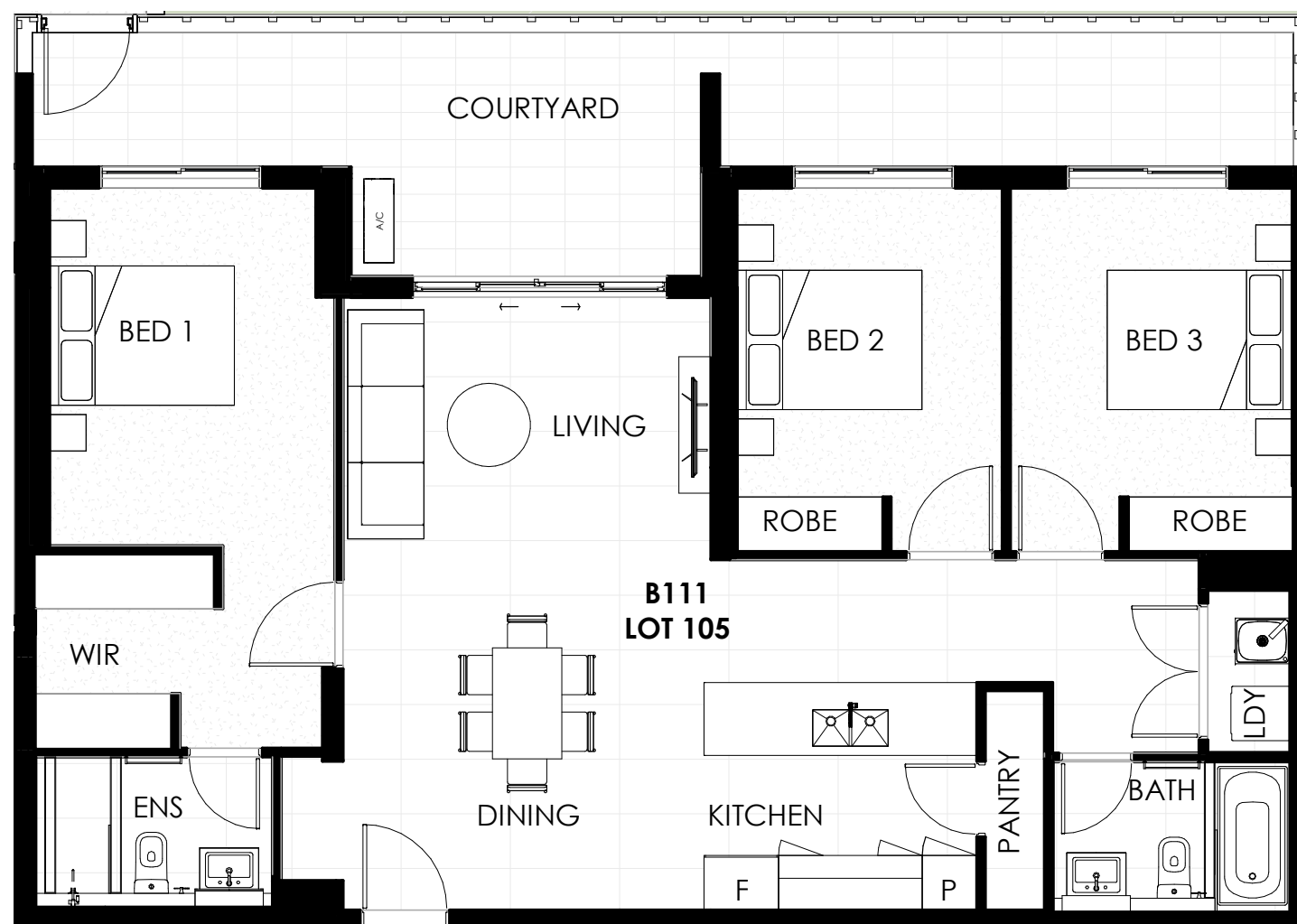
ALAND

M Unit Type - 055

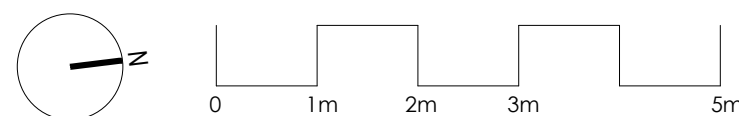
BUILDING B

B111

1



LOCATION PLAN



Disclaimer: This plan is for marketing purposes only, is not to scale, will not form part of any contract for the sale of the property and does not define what is being sold and purchased under any such contract. The plan was produced prior to construction, and any dimensions, areas fittings, finishes and specifications referred to in the plan are subject to change without notice. The sale of the property will exclude any furniture, furnishings, plants and vegetation, chattels and non-fixed items depicted in the plan, and the positioning of any such items in the plan cannot be relied upon as an indication of the final positioning of any power points, TV connections points and the like. For details of the inclusions in the sale, prospective buyers must refer to the Schedule of Finishes and any other provisions expressly stated in the contact for sale. All graphics, including but not limited to tile layout, balustrades, and bedroom opaque window location are indicative only. Bulkheads for services are not depicted. MARKETING FLOOR PLAN - REV C - OCTOBER 2024



JASMINE
SCHOFIELD GARDENS

BUILDING B

UNIT B111

LOT 105

LIVABLE



3



2



2

INTERNAL AREA 101 m²

EXTERNAL AREA 24 m²

TOTAL AREA 125 m²



M Unit Type - 054

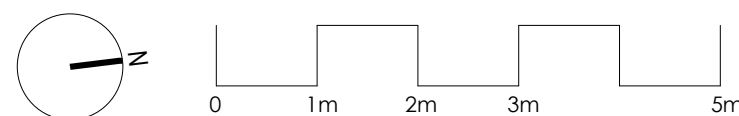
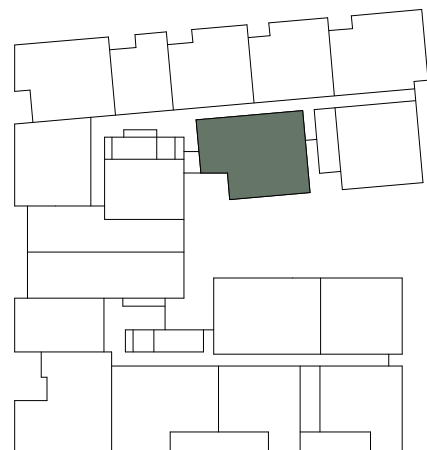
BUILDING B

B110
B210
B310

3



LOCATION PLAN



JASMINE
SCHOFIELD GARDENS

BUILDING B

UNIT B110

LOT 104

LIVABLE



3



2



2

INTERNAL AREA 95 m²

EXTERNAL AREA 35 m²

TOTAL AREA 130 m²

Disclaimer: This plan is for marketing purposes only, is not to scale, will not form part of any contract for the sale of the property and does not define what is being sold and purchased under any such contract. The plan was produced prior to construction, and any dimensions, areas fittings, finishes and specifications referred to in the plan are subject to change without notice. The sale of the property will exclude any furniture, furnishings, plants and vegetation, chattels and non-fixed items depicted in the plan, and the positioning of any such items in the plan cannot be relied upon as an indication of the final positioning of any power points, TV connections points and the like. For details of the inclusions in the sale, prospective buyers must refer to the Schedule of Finishes and any other provisions expressly stated in the contact for sale. All graphics, including but not limited to tile layout, balustrades, and bedroom opaque window location are indicative only. Bulkheads for services are not depicted. MARKETING FLOOR PLAN - REV C - OCTOBER 2024





JASMINE
SCHOFIELD GARDENS

BUILDING E

UNIT E405

LOT 226



3



2



2

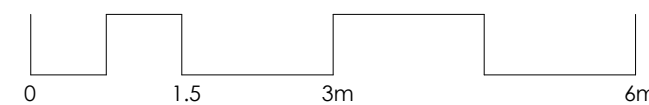
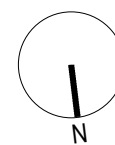
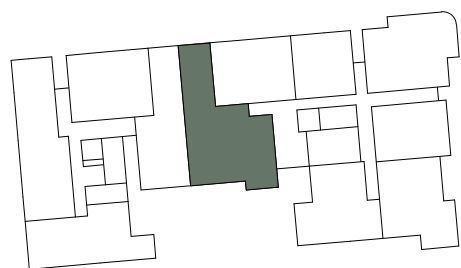
INTERNAL AREA 122 m²

EXTERNAL AREA 16 m²

TOTAL AREA 138 m²



LOCATION PLAN



Disclaimer: This plan is for marketing purposes only, is not to scale, will not form part of any contract for the sale of the property and does not define what is being sold and purchased under any such contract. The plan was produced prior to construction, and any dimensions, areas fittings, finishes and specifications referred to in the plan are subject to change without notice. The sale of the property will exclude any furniture, furnishings, plants and vegetation, chattels and non-fixed items depicted in the plan, and the positioning of any such items in the plan cannot be relied upon as an indication of the final positioning of any power points, TV connections points and the like. For details of the inclusions in the sale, prospective buyers must refer to the Schedule of Finishes and any other provisions expressly stated in the contact for sale. All graphics, including but not limited to tile layout, balustrades, and bedroom opaque window location are indicative only. Bulkheads for services are not depicted. MARKETING FLOOR PLAN - REV B - AUGUST 2023





JASMINE
SCHOFIELD GARDENS

BUILDING E

UNIT E401

LOT 222



3

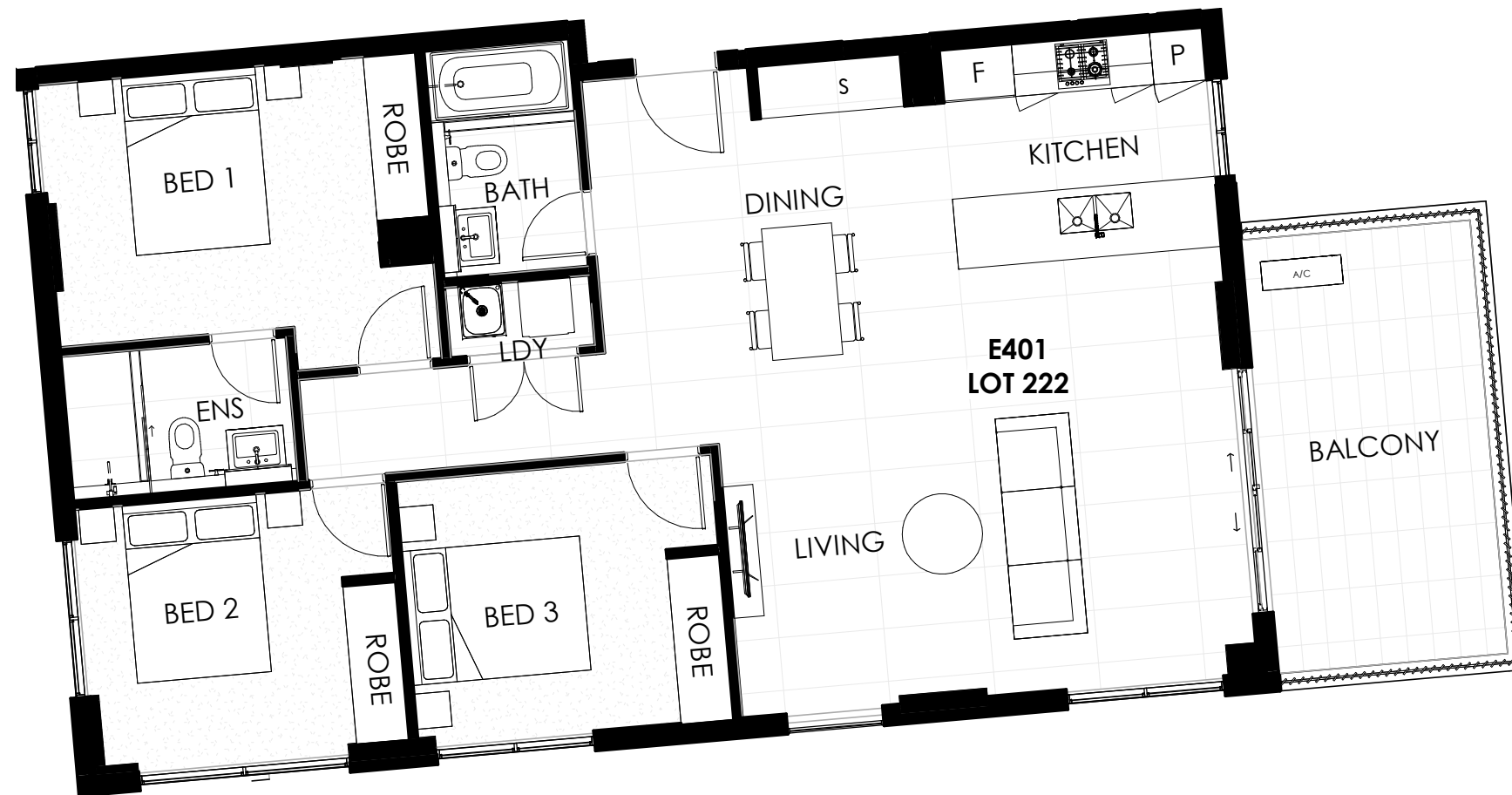


2

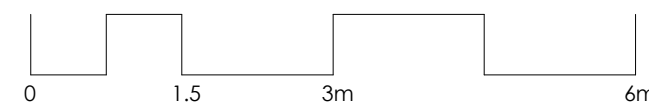
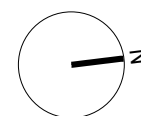
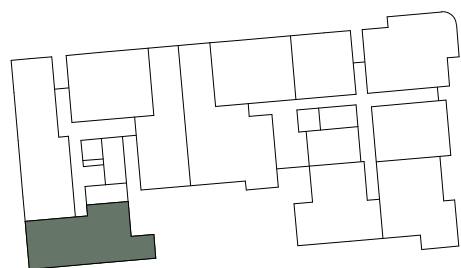


2

INTERNAL AREA	99 m ²
EXTERNAL AREA	12 m ²
TOTAL AREA	111 m ²



LOCATION PLAN



Disclaimer: This plan is for marketing purposes only, is not to scale, will not form part of any contract for the sale of the property and does not define what is being sold and purchased under any such contract. The plan was produced prior to construction, and any dimensions, areas fittings, finishes and specifications referred to in the plan are subject to change without notice. The sale of the property will exclude any furniture, furnishings, plants and vegetation, chattels and non-fixed items depicted in the plan, and the positioning of any such items in the plan cannot be relied upon as an indication of the final positioning of any power points, TV connections points and the like. For details of the inclusions in the sale, prospective buyers must refer to the Schedule of Finishes and any other provisions expressly stated in the contact for sale. All graphics, including but not limited to tile layout, balustrades, and bedroom opaque window location are indicative only. Bulkheads for services are not depicted. MARKETING FLOOR PLAN - REV B - AUGUST 2023





JASMINE
SCHOFIELD GARDENS

BUILDING E

UNIT E206

LOT 203

LIVABLE



3



2



2

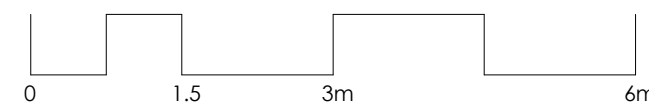
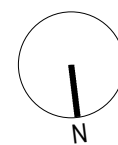
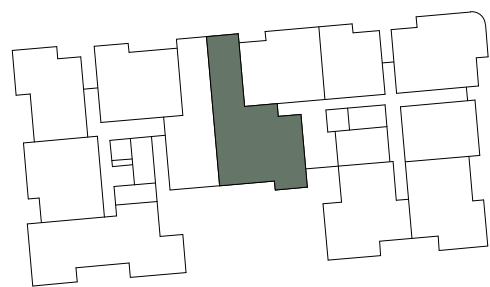
INTERNAL AREA 126 m²

EXTERNAL AREA 17 m²

TOTAL AREA 143 m²



LOCATION PLAN



Disclaimer: This plan is for marketing purposes only, is not to scale, will not form part of any contract for the sale of the property and does not define what is being sold and purchased under any such contract. The plan was produced prior to construction, and any dimensions, areas fittings, finishes and specifications referred to in the plan are subject to change without notice. The sale of the property will exclude any furniture, furnishings, plants and vegetation, chattels and non-fixed items depicted in the plan, and the positioning of any such items in the plan cannot be relied upon as an indication of the final positioning of any power points, TV connections points and the like. For details of the inclusions in the sale, prospective buyers must refer to the Schedule of Finishes and any other provisions expressly stated in the contact for sale. All graphics, including but not limited to tile layout, balustrades, and bedroom opaque window location are indicative only. Bulkheads for services are not depicted. MARKETING FLOOR PLAN - REV B - AUGUST 2023





JASMINE
SCHOFIELD GARDENS

BUILDING E

UNIT E106

LOT 191

LIVABLE



3



2



2

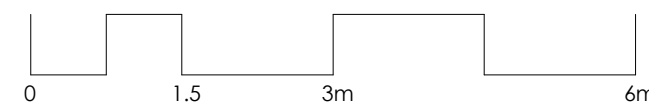
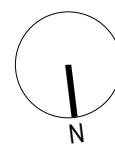
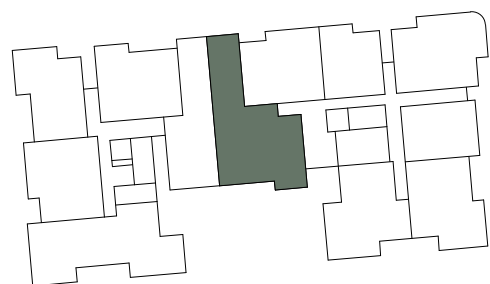
INTERNAL AREA 127 m²

EXTERNAL AREA 24 m²

TOTAL AREA 151 m²



LOCATION PLAN



Disclaimer: This plan is for marketing purposes only, is not to scale, will not form part of any contract for the sale of the property and does not define what is being sold and purchased under any such contract. The plan was produced prior to construction, and any dimensions, areas fittings, finishes and specifications referred to in the plan are subject to change without notice. The sale of the property will exclude any furniture, furnishings, plants and vegetation, chattels and non-fixed items depicted in the plan, and the positioning of any such items in the plan cannot be relied upon as an indication of the final positioning of any power points, TV connections points and the like. For details of the inclusions in the sale, prospective buyers must refer to the Schedule of Finishes and any other provisions expressly stated in the contact for sale. All graphics, including but not limited to tile layout, balustrades, and bedroom opaque window location are indicative only. Bulkheads for services are not depicted. MARKETING FLOOR PLAN - REV B - AUGUST 2023

ALAND



JASMINE
SCHOFIELD GARDENS

BUILDING E

UNIT EG10

LOT 184



3



2

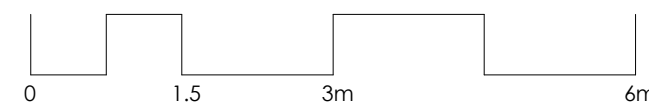
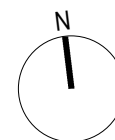
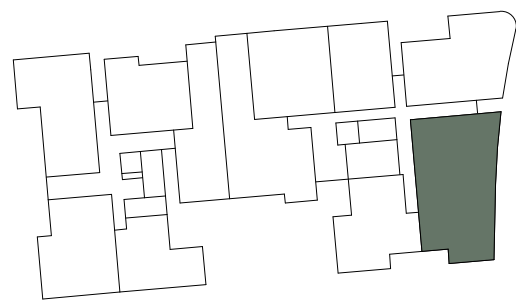


2

INTERNAL AREA	99 m ²
EXTERNAL AREA	70 m ²
TOTAL AREA	169 m ²



LOCATION PLAN

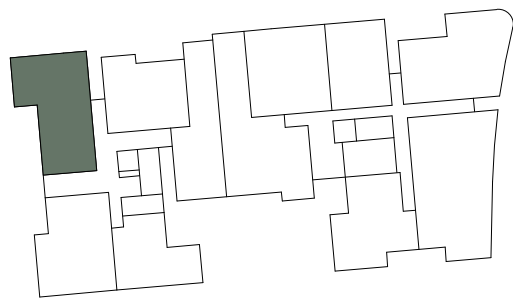


Disclaimer: This plan is for marketing purposes only, is not to scale, will not form part of any contract for the sale of the property and does not define what is being sold and purchased under any such contract. The plan was produced prior to construction, and any dimensions, areas fittings, finishes and specifications referred to in the plan are subject to change without notice. The sale of the property will exclude any furniture, furnishings, plants and vegetation, chattels and non-fixed items depicted in the plan, and the positioning of any such items in the plan cannot be relied upon as an indication of the final positioning of any power points, TV connections points and the like. For details of the inclusions in the sale, prospective buyers must refer to the Schedule of Finishes and any other provisions expressly stated in the contact for sale. All graphics, including but not limited to tile layout, balustrades, and bedroom opaque window location are indicative only. Bulkheads for services are not depicted. MARKETING FLOOR PLAN - REV B - AUGUST 2023

ALAND



LOCATION PLAN



JASMINE
SCHOFIELD GARDENS

BUILDING E

UNIT EG03

LOT 177



INTERNAL AREA	98 m ²
EXTERNAL AREA	33 m ²
TOTAL AREA	131 m²

Disclaimer: This plan is for marketing purposes only, is not to scale, will not form part of any contract for the sale of the property and does not define what is being sold and purchased under any such contract. The plan was produced prior to construction, and any dimensions, areas fittings, finishes and specifications referred to in the plan are subject to change without notice. The sale of the property will exclude any furniture, furnishings, plants and vegetation, chattels and non-fixed items depicted in the plan, and the positioning of any such items in the plan cannot be relied upon as an indication of the final positioning of any power points, TV connections points and the like. For details of the inclusions in the sale, prospective buyers must refer to the Schedule of Finishes and any other provisions expressly stated in the contact for sale. All graphics, including but not limited to tile layout, balustrades, and bedroom opaque window location are indicative only. Bulkheads for services are not depicted. MARKETING FLOOR PLAN - REV B - AUGUST 2023





JASMINE
SCHOFIELD GARDENS

BUILDING D

UNIT D402

LOT 162



3



2

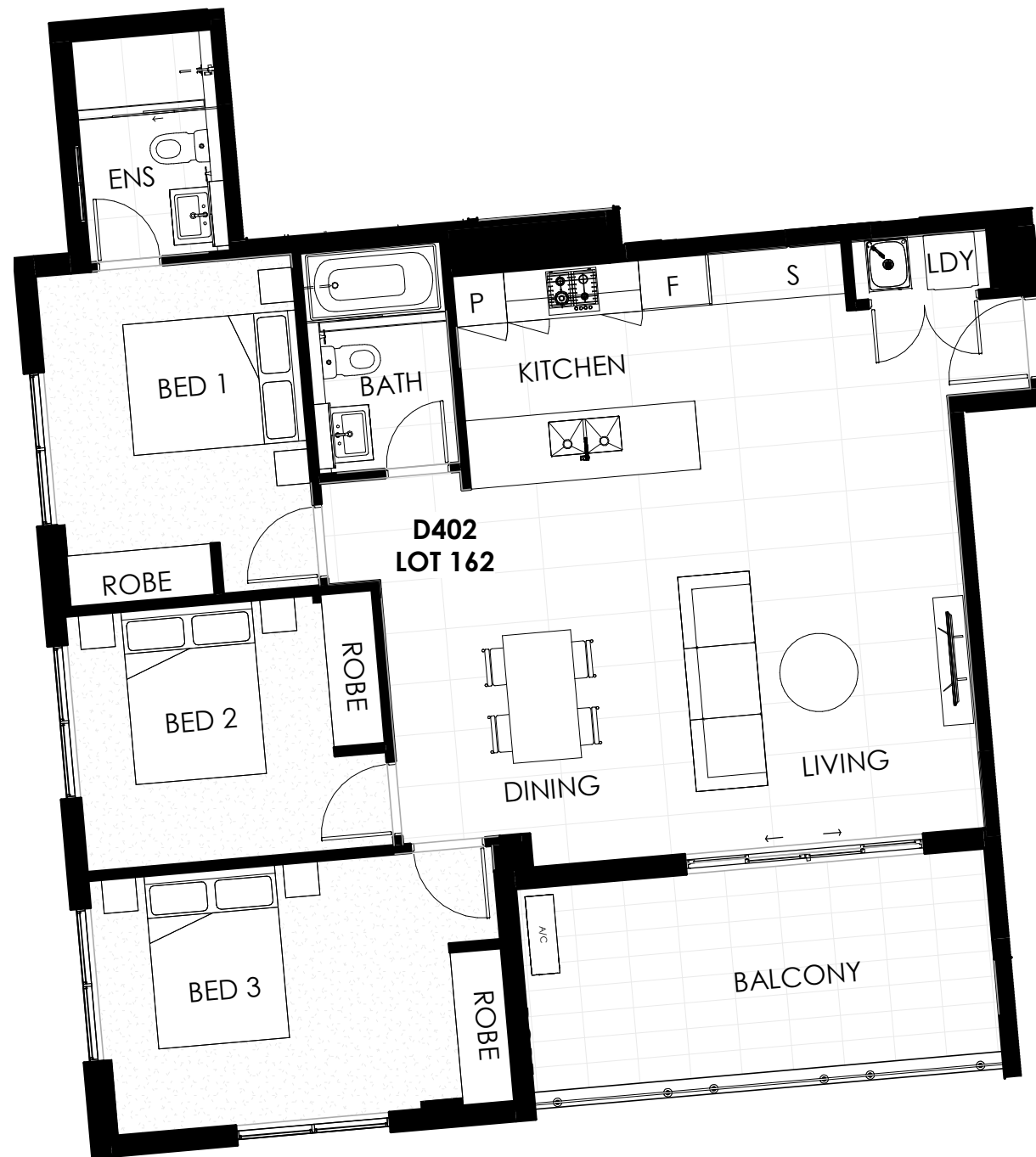


2

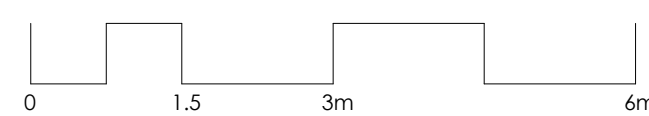
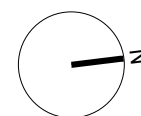
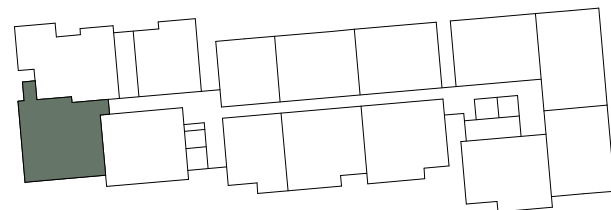
INTERNAL AREA 92 m²

EXTERNAL AREA 13 m²

TOTAL AREA 105 m²



LOCATION PLAN



Disclaimer: This plan is for marketing purposes only, is not to scale, will not form part of any contract for the sale of the property and does not define what is being sold and purchased under any such contract. The plan was produced prior to construction, and any dimensions, areas fittings, finishes and specifications referred to in the plan are subject to change without notice. The sale of the property will exclude any furniture, furnishings, plants and vegetation, chattels and non-fixed items depicted in the plan, and the positioning of any such items in the plan cannot be relied upon as an indication of the final positioning of any power points, TV connections points and the like. For details of the inclusions in the sale, prospective buyers must refer to the Schedule of Finishes and any other provisions expressly stated in the contact for sale. All graphics, including but not limited to tile layout, balustrades, and bedroom opaque window location are indicative only. Bulkheads for services are not depicted. MARKETING FLOOR PLAN - REV B - AUGUST 2023

ALAND

M Unit Type - 043

BUILDING A

A513

BUILDING B

B211

B311

B409

B501

5



JASMINE
SCHOFIELD GARDENS

BUILDING A

UNIT A513

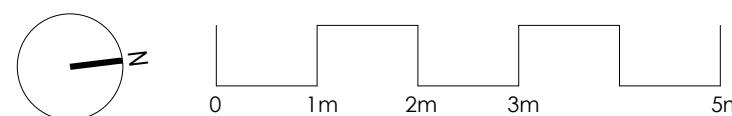
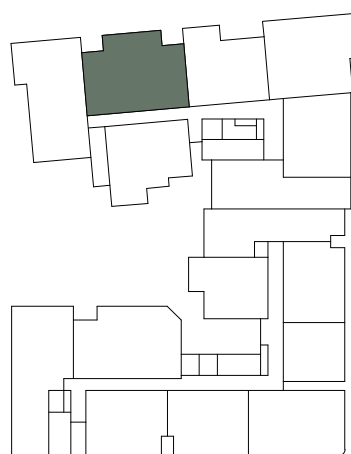
LOT 317



INTERNAL AREA	101 m ²
EXTERNAL AREA	13 m ²
TOTAL AREA	114 m ²



LOCATION PLAN



Disclaimer: This plan is for marketing purposes only, is not to scale, will not form part of any contract for the sale of the property and does not define what is being sold and purchased under any such contract. The plan was produced prior to construction, and any dimensions, areas fittings, finishes and specifications referred to in the plan are subject to change without notice. The sale of the property will exclude any furniture, furnishings, plants and vegetation, chattels and non-fixed items depicted in the plan, and the positioning of any such items in the plan cannot be relied upon as an indication of the final positioning of any power points, TV connections points and the like. For details of the inclusions in the sale, prospective buyers must refer to the Schedule of Finishes and any other provisions expressly stated in the contact for sale. All graphics, including but not limited to tile layout, balustrades, and bedroom opaque window location are indicative only. Bulkheads for services are not depicted. MARKETING FLOOR PLAN - REV C - OCTOBER 2024





JASMINE
SCHOFIELD GARDENS

BUILDING A

UNIT A505

LOT 309

LIVABLE



3



2



2

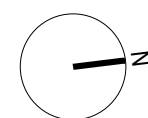
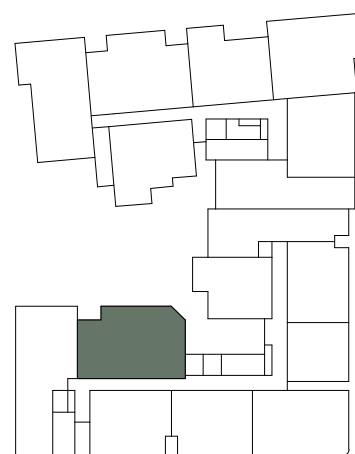
INTERNAL AREA 93 m²

EXTERNAL AREA 20 m²

TOTAL AREA 113 m²



LOCATION PLAN



0 1m 2m 3m 5m

Disclaimer: This plan is for marketing purposes only, is not to scale, will not form part of any contract for the sale of the property and does not define what is being sold and purchased under any such contract. The plan was produced prior to construction, and any dimensions, areas fittings, finishes and specifications referred to in the plan are subject to change without notice. The sale of the property will exclude any furniture, furnishings, plants and vegetation, chattels and non-fixed items depicted in the plan, and the positioning of any such items in the plan cannot be relied upon as an indication of the final positioning of any power points, TV connections points and the like. For details of the inclusions in the sale, prospective buyers must refer to the Schedule of Finishes and any other provisions expressly stated in the contact for sale. All graphics, including but not limited to tile layout, balustrades, and bedroom opaque window location are indicative only. Bulkheads for services are not depicted. MARKETING FLOOR PLAN - REV C - OCTOBER 2024

ALAND

M Unit Type - 040

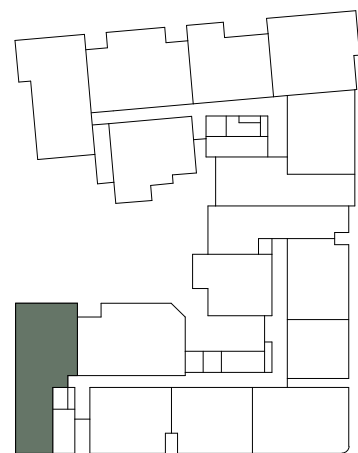
BUILDING A

A504

1



LOCATION PLAN



JASMINE
SCHOFIELD GARDENS

BUILDING A

UNIT A504

LOT 308



3



2



2

INTERNAL AREA 99 m²

EXTERNAL AREA 20 m²

TOTAL AREA 119 m²

Disclaimer: This plan is for marketing purposes only, is not to scale, will not form part of any contract for the sale of the property and does not define what is being sold and purchased under any such contract. The plan was produced prior to construction, and any dimensions, areas fittings, finishes and specifications referred to in the plan are subject to change without notice. The sale of the property will exclude any furniture, furnishings, plants and vegetation, chattels and non-fixed items depicted in the plan, and the positioning of any such items in the plan cannot be relied upon as an indication of the final positioning of any power points, TV connections points and the like. For details of the inclusions in the sale, prospective buyers must refer to the Schedule of Finishes and any other provisions expressly stated in the contact for sale. All graphics, including but not limited to tile layout, balustrades, and bedroom opaque window location are indicative only. Bulkheads for services are not depicted. MARKETING FLOOR PLAN - REV C - OCTOBER 2024





JASMINE
SCHOFIELD GARDENS

BUILDING A

UNIT A406

LOT 292

LIVABLE



3



2



2

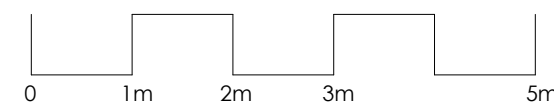
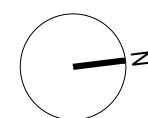
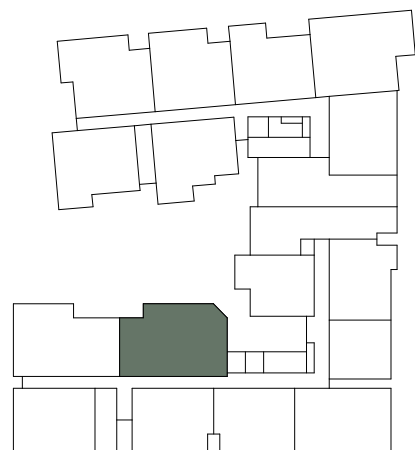
INTERNAL AREA 93 m²

EXTERNAL AREA 20 m²

TOTAL AREA 113 m²



LOCATION PLAN



Disclaimer: This plan is for marketing purposes only, is not to scale, will not form part of any contract for the sale of the property and does not define what is being sold and purchased under any such contract. The plan was produced prior to construction, and any dimensions, areas fittings, finishes and specifications referred to in the plan are subject to change without notice. The sale of the property will exclude any furniture, furnishings, plants and vegetation, chattels and non-fixed items depicted in the plan, and the positioning of any such items in the plan cannot be relied upon as an indication of the final positioning of any power points, TV connections points and the like. For details of the inclusions in the sale, prospective buyers must refer to the Schedule of Finishes and any other provisions expressly stated in the contact for sale. All graphics, including but not limited to tile layout, balustrades, and bedroom opaque window location are indicative only. Bulkheads for services are not depicted. MARKETING FLOOR PLAN - REV C - OCTOBER 2024

ALAND



JASMINE
SCHOFIELD GARDENS

BUILDING A

UNIT A405

LOT 291



3



2



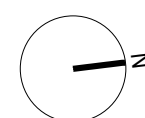
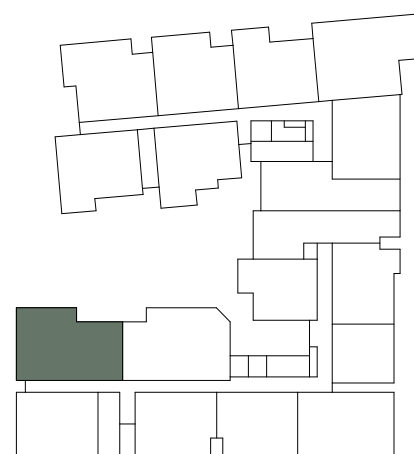
2

INTERNAL AREA 93 m²

EXTERNAL AREA 14 m²

TOTAL AREA 107 m²

LOCATION PLAN



0 1m 2m 3m 5m

Disclaimer: This plan is for marketing purposes only, is not to scale, will not form part of any contract for the sale of the property and does not define what is being sold and purchased under any such contract. The plan was produced prior to construction, and any dimensions, areas fittings, finishes and specifications referred to in the plan are subject to change without notice. The sale of the property will exclude any furniture, furnishings, plants and vegetation, chattels and non-fixed items depicted in the plan, and the positioning of any such items in the plan cannot be relied upon as an indication of the final positioning of any power points, TV connections points and the like. For details of the inclusions in the sale, prospective buyers must refer to the Schedule of Finishes and any other provisions expressly stated in the contact for sale. All graphics, including but not limited to tile layout, balustrades, and bedroom opaque window location are indicative only. Bulkheads for services are not depicted. MARKETING FLOOR PLAN - REV C - OCTOBER 2024

ALAND



JASMINE
SCHOFIELD GARDENS

BUILDING A

UNIT A306

LOT 274

LIVABLE



3



2



2

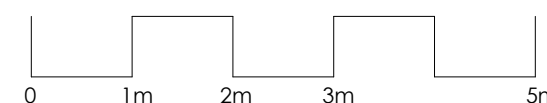
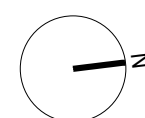
INTERNAL AREA 93 m²

EXTERNAL AREA 22 m²

TOTAL AREA 115 m²



LOCATION PLAN



Disclaimer: This plan is for marketing purposes only, is not to scale, will not form part of any contract for the sale of the property and does not define what is being sold and purchased under any such contract. The plan was produced prior to construction, and any dimensions, areas fittings, finishes and specifications referred to in the plan are subject to change without notice. The sale of the property will exclude any furniture, furnishings, plants and vegetation, chattels and non-fixed items depicted in the plan, and the positioning of any such items in the plan cannot be relied upon as an indication of the final positioning of any power points, TV connections points and the like. For details of the inclusions in the sale, prospective buyers must refer to the Schedule of Finishes and any other provisions expressly stated in the contact for sale. All graphics, including but not limited to tile layout, balustrades, and bedroom opaque window location are indicative only. Bulkheads for services are not depicted. MARKETING FLOOR PLAN - REV C - OCTOBER 2024

ALAND



JASMINE
SCHOFIELD GARDENS

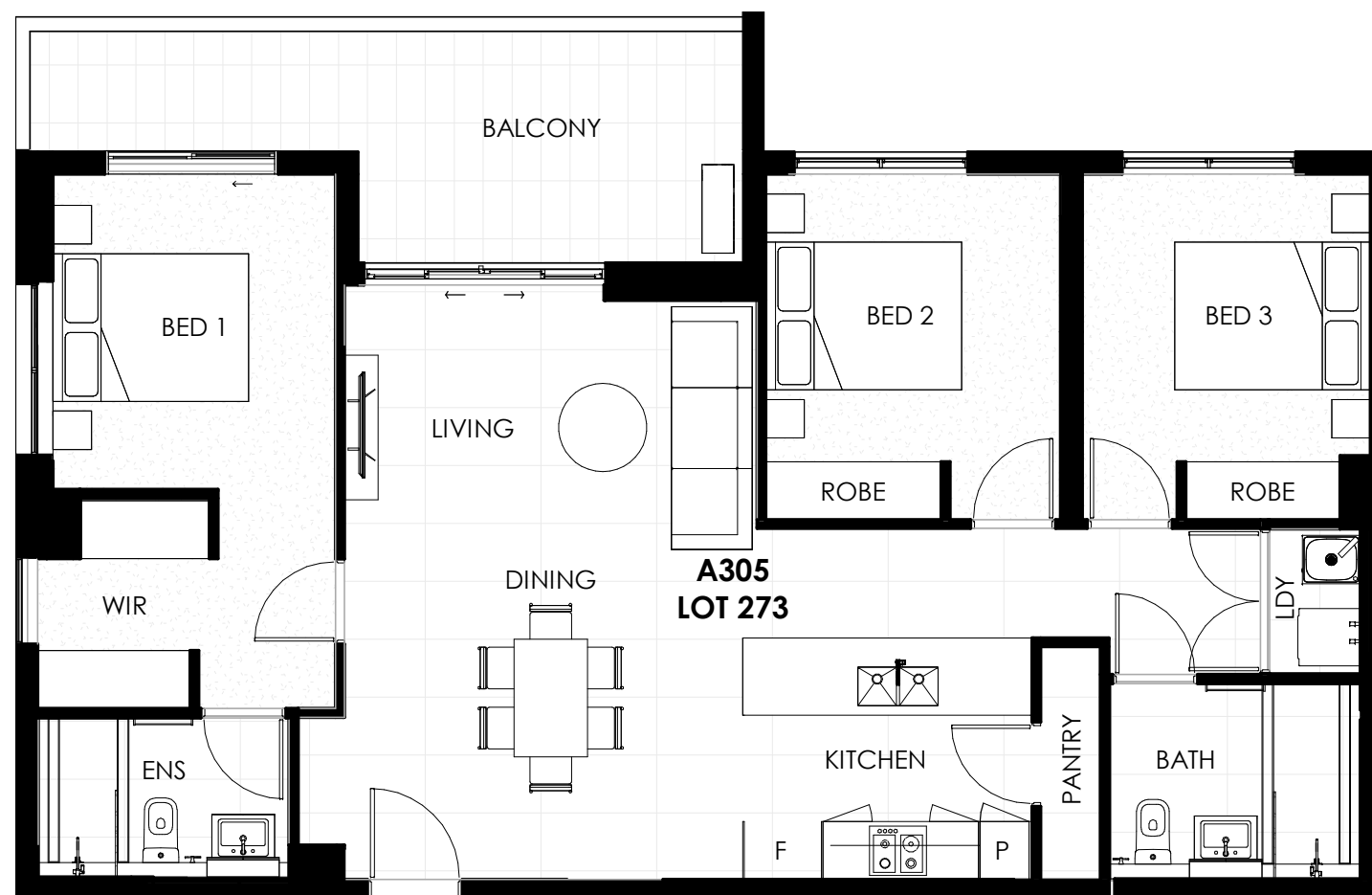
BUILDING A

UNIT A305

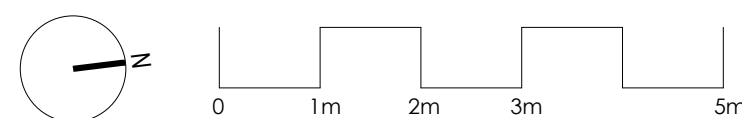
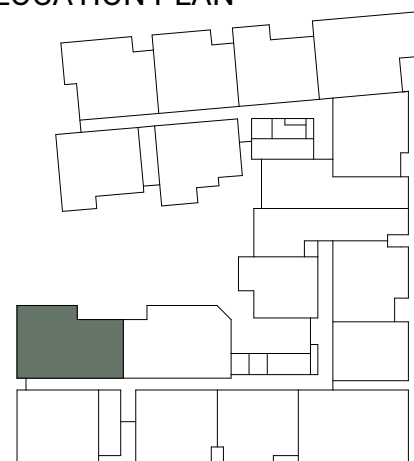
LOT 273



INTERNAL AREA	93 m ²
EXTERNAL AREA	14 m ²
TOTAL AREA	107 m ²



LOCATION PLAN



Disclaimer: This plan is for marketing purposes only, is not to scale, will not form part of any contract for the sale of the property and does not define what is being sold and purchased under any such contract. The plan was produced prior to construction, and any dimensions, areas fittings, finishes and specifications referred to in the plan are subject to change without notice. The sale of the property will exclude any furniture, furnishings, plants and vegetation, chattels and non-fixed items depicted in the plan, and the positioning of any such items in the plan cannot be relied upon as an indication of the final positioning of any power points, TV connections points and the like. For details of the inclusions in the sale, prospective buyers must refer to the Schedule of Finishes and any other provisions expressly stated in the contact for sale. All graphics, including but not limited to tile layout, balustrades, and bedroom opaque window location are indicative only. Bulkheads for services are not depicted. MARKETING FLOOR PLAN - REV C - OCTOBER 2024

ALAND

M Unit Type - 022

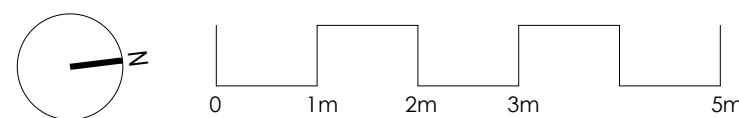
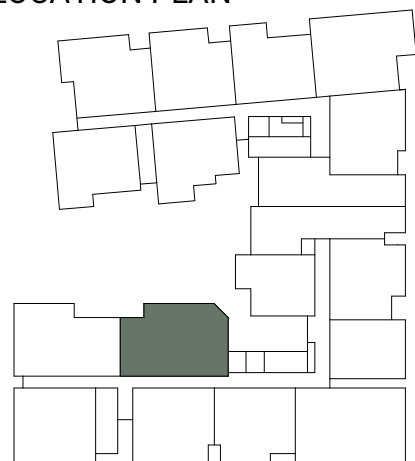
BUILDING A

A206
A306
A406
A505

4



LOCATION PLAN



Disclaimer: This plan is for marketing purposes only, is not to scale, will not form part of any contract for the sale of the property and does not define what is being sold and purchased under any such contract. The plan was produced prior to construction, and any dimensions, areas fittings, finishes and specifications referred to in the plan are subject to change without notice. The sale of the property will exclude any furniture, furnishings, plants and vegetation, chattels and non-fixed items depicted in the plan, and the positioning of any such items in the plan cannot be relied upon as an indication of the final positioning of any power points, TV connections points and the like. For details of the inclusions in the sale, prospective buyers must refer to the Schedule of Finishes and any other provisions expressly stated in the contact for sale. All graphics, including but not limited to tile layout, balustrades, and bedroom opaque window location are indicative only. Bulkheads for services are not depicted. MARKETING FLOOR PLAN - REV C - OCTOBER 2024



JASMINE
SCHOFIELD GARDENS

BUILDING A

UNIT A206

LOT 256

LIVABLE



INTERNAL AREA	93 m ²
EXTERNAL AREA	22 m ²
TOTAL AREA	115 m ²



M Unit Type - 021

BUILDING A

A205
A305
A405

3



JASMINE
SCHOFIELD GARDENS

BUILDING A

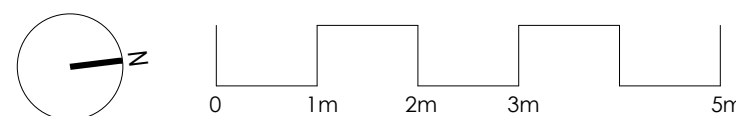
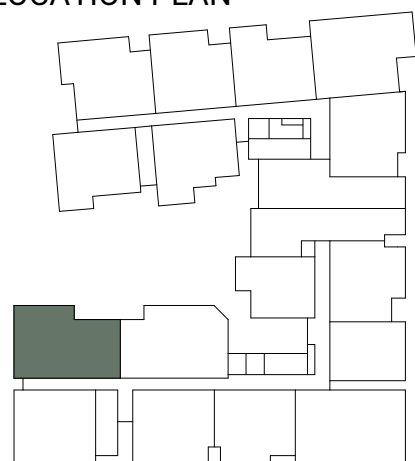
UNIT A205

LOT 255



INTERNAL AREA	93 m ²
EXTERNAL AREA	14 m ²
TOTAL AREA	107 m ²

LOCATION PLAN



Disclaimer: This plan is for marketing purposes only, is not to scale, will not form part of any contract for the sale of the property and does not define what is being sold and purchased under any such contract. The plan was produced prior to construction, and any dimensions, areas fittings, finishes and specifications referred to in the plan are subject to change without notice. The sale of the property will exclude any furniture, furnishings, plants and vegetation, chattels and non-fixed items depicted in the plan, and the positioning of any such items in the plan cannot be relied upon as an indication of the final positioning of any power points, TV connections points and the like. For details of the inclusions in the sale, prospective buyers must refer to the Schedule of Finishes and any other provisions expressly stated in the contact for sale. All graphics, including but not limited to tile layout, balustrades, and bedroom opaque window location are indicative only. Bulkheads for services are not depicted. MARKETING FLOOR PLAN - REV C - OCTOBER 2024



M Unit Type - 005

BUILDING A
A106

1



JASMINE
SCHOFIELD GARDENS

BUILDING A

UNIT A106

LOT 238

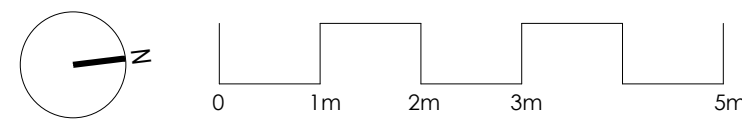
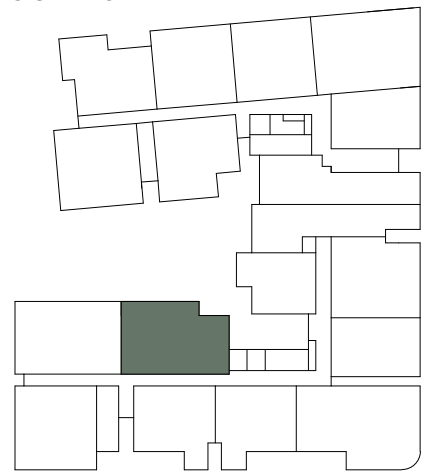
LIVABLE



INTERNAL AREA	93 m ²
EXTERNAL AREA	23 m ²
TOTAL AREA	116 m²



LOCATION PLAN



Disclaimer: This plan is for marketing purposes only, is not to scale, will not form part of any contract for the sale of the property and does not define what is being sold and purchased under any such contract. The plan was produced prior to construction, and any dimensions, areas fittings, finishes and specifications referred to in the plan are subject to change without notice. The sale of the property will exclude any furniture, furnishings, plants and vegetation, chattels and non-fixed items depicted in the plan, and the positioning of any such items in the plan cannot be relied upon as an indication of the final positioning of any power points, TV connections points and the like. For details of the inclusions in the sale, prospective buyers must refer to the Schedule of Finishes and any other provisions expressly stated in the contact for sale. All graphics, including but not limited to tile layout, balustrades, and bedroom opaque window location are indicative only. Bulkheads for services are not depicted. MARKETING FLOOR PLAN - REV C - OCTOBER 2024



M Unit Type - 004

BUILDING A
A105

1



JASMINE
SCHOFIELD GARDENS

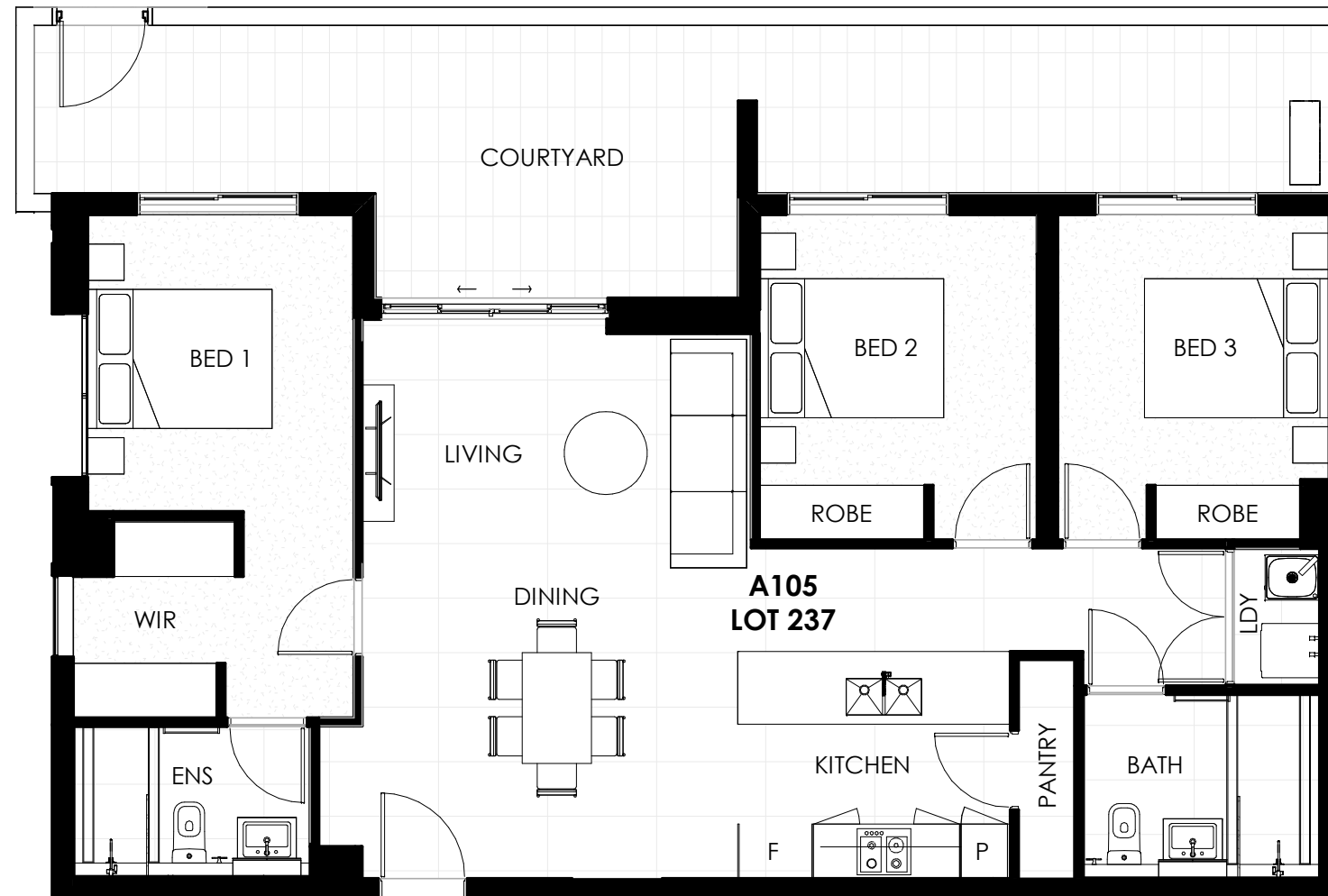
BUILDING A

UNIT A105

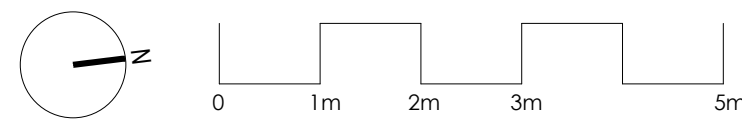
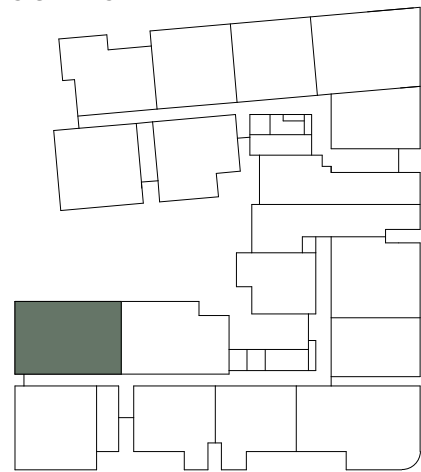
LOT 237



INTERNAL AREA	93 m ²
EXTERNAL AREA	30 m ²
TOTAL AREA	123 m²



LOCATION PLAN



Disclaimer: This plan is for marketing purposes only, is not to scale, will not form part of any contract for the sale of the property and does not define what is being sold and purchased under any such contract. The plan was produced prior to construction, and any dimensions, areas fittings, finishes and specifications referred to in the plan are subject to change without notice. The sale of the property will exclude any furniture, furnishings, plants and vegetation, chattels and non-fixed items depicted in the plan, and the positioning of any such items in the plan cannot be relied upon as an indication of the final positioning of any power points, TV connections points and the like. For details of the inclusions in the sale, prospective buyers must refer to the Schedule of Finishes and any other provisions expressly stated in the contact for sale. All graphics, including but not limited to tile layout, balustrades, and bedroom opaque window location are indicative only. Bulkheads for services are not depicted. MARKETING FLOOR PLAN - REV C - OCTOBER 2024

