

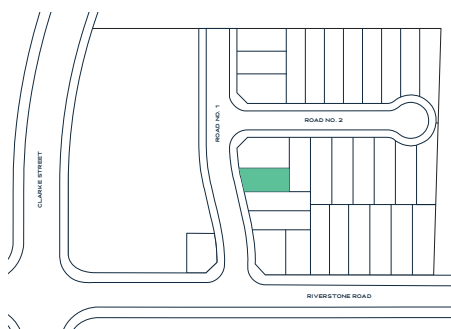


## LOT 11

Clarke St, Rouse Hill NSW 2155

Ground Floor	89.98m <sup>2</sup>
First Floor	85.88m <sup>2</sup>
Garage	18.97m <sup>2</sup>
<b>Total</b>	<b>198.53m<sup>2</sup></b>

5 3.5 1



## TURNKEY INCLUSIONS

900mm gas wok cooktop with cast-iron trivets, 900mm ducted rangehood & 600mm electric oven.

20mm zero silica stone kitchen benchtops with square edging and soft close kitchen drawers & cupboards (in accordance with selected colour scheme).

Actron dual zone ducted reverse cycle heating & cooling system.

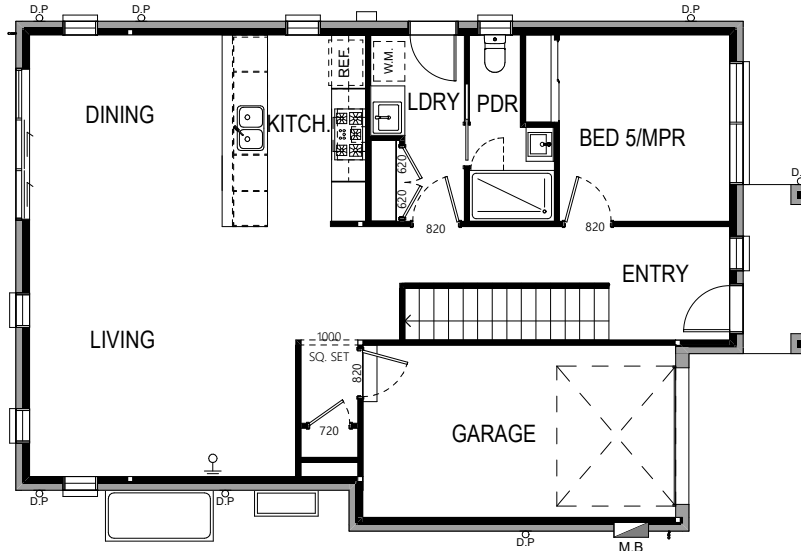
Latest in hybrid flooring (heat, stain, water & bacteria resistant).

Built-in sliding mirrored storage.

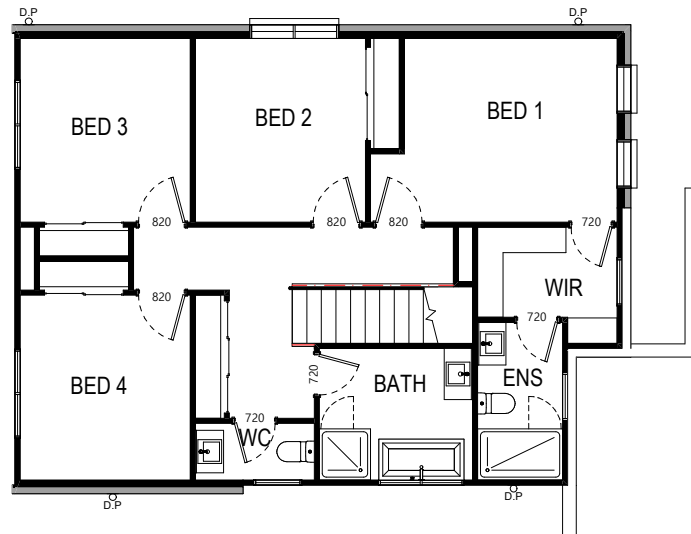
LED downlights throughout kitchen & bathroom areas.

Sectional overhead Colorbond garage door with auto opener (2 hand-held transmitters & 1 wall-mounted transmitter).


Landscaping to front and rear yards, concrete driveway, boundary fencing, letterbox and clothesline.



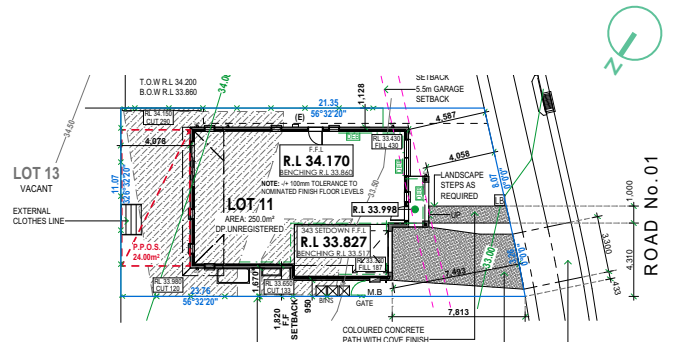
GROUND FLOOR



FIRST FLOOR

 5    
  3.5    
  1

Land Size	250.0m <sup>2</sup>
House Size	198.53m <sup>2</sup>
Frontage	8.07m



SITE PLAN

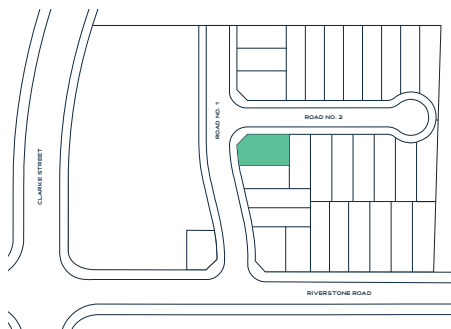


## LOT 12

Clarke St, Rouse Hill NSW 2155

Ground Floor	83.85m <sup>2</sup>
First Floor	87.88m <sup>2</sup>
Garage	20.46m <sup>2</sup>
<b>Total</b>	<b>206.88m<sup>2</sup></b>

5 3.5 1



## TURNKEY INCLUSIONS

900mm gas wok cooktop with cast-iron trivets, 900mm ducted rangehood & 600mm electric oven.

20mm zero silica stone kitchen benchtops with square edging and soft close kitchen drawers & cupboards (in accordance with selected colour scheme).

Actron dual zone ducted reverse cycle heating & cooling system.

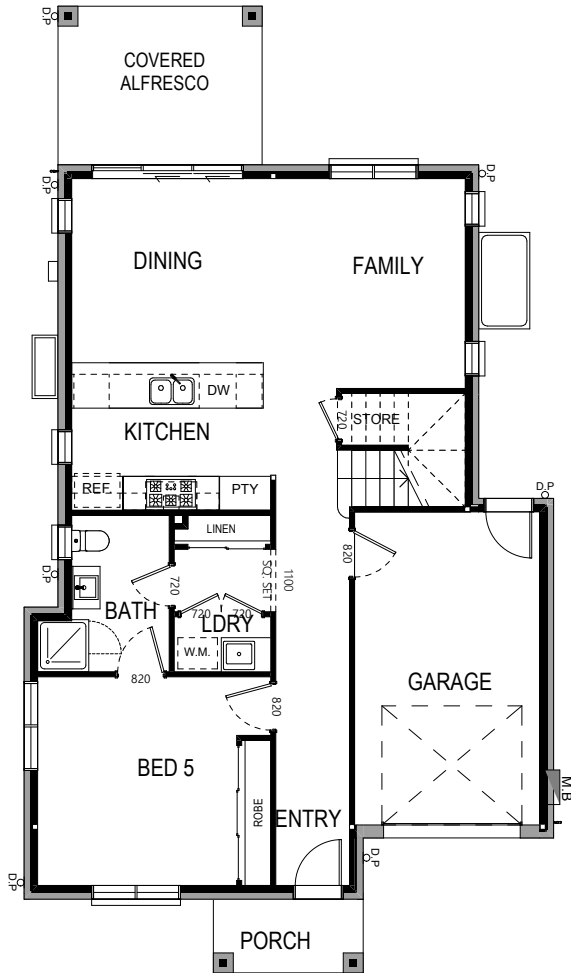
Latest in hybrid flooring (heat, stain, water & bacteria resistant).

Built-in sliding mirrored storage.

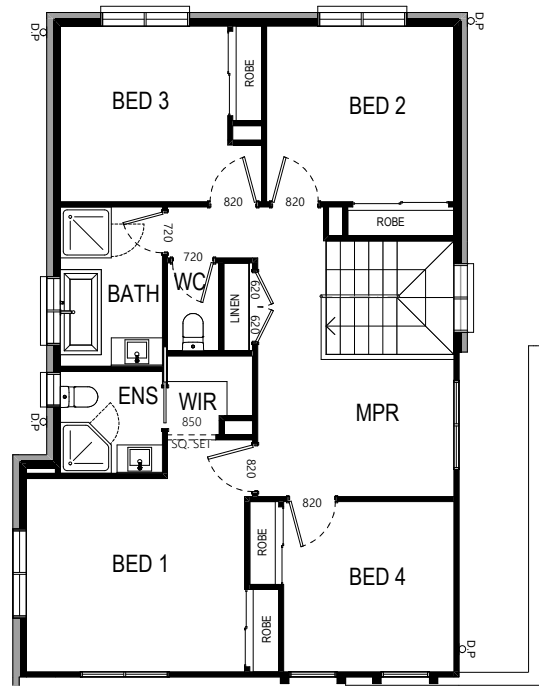
LED downlights throughout kitchen & bathroom areas.

Sectional overhead Colorbond garage door with auto opener (2 hand-held transmitters & 1 wall-mounted transmitter).

Landscaping to front and rear yards, concrete driveway, boundary fencing, letterbox and clothesline.



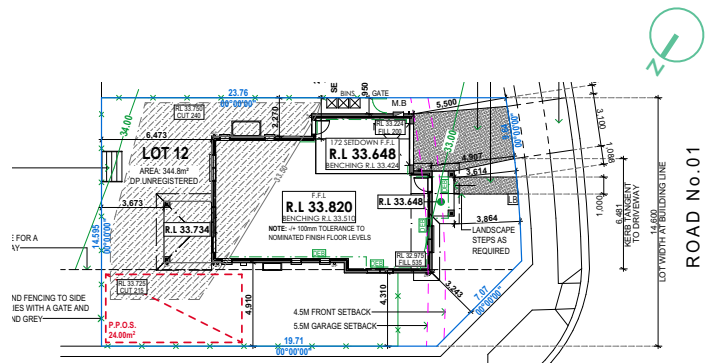
GROUND FLOOR



FIRST FLOOR

5 3.5 1

Land Size	344.8m <sup>2</sup>
House Size	206.88m <sup>2</sup>
Frontage	9.64m



SITE PLAN

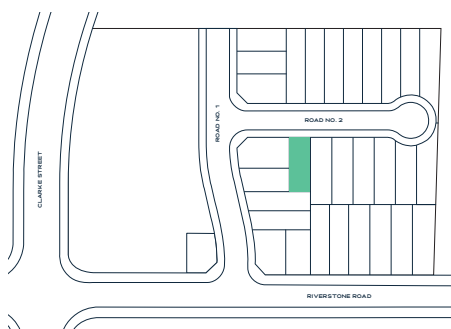


## LOT 13

Clarke St, Rouse Hill NSW 2155

Ground Floor	79.13m <sup>2</sup>
First Floor	83.68m <sup>2</sup>
Garage	20.05m <sup>2</sup>
<b>Total</b>	<b>186.84m<sup>2</sup></b>

 5
  3.5
  1



## TURNKEY INCLUSIONS

900mm gas wok cooktop with cast-iron trivets, 900mm ducted rangehood & 600mm electric oven.

20mm zero silica stone kitchen benchtops with square edging and soft close kitchen drawers & cupboards (in accordance with selected colour scheme).

Actron dual zone ducted reverse cycle heating & cooling system.

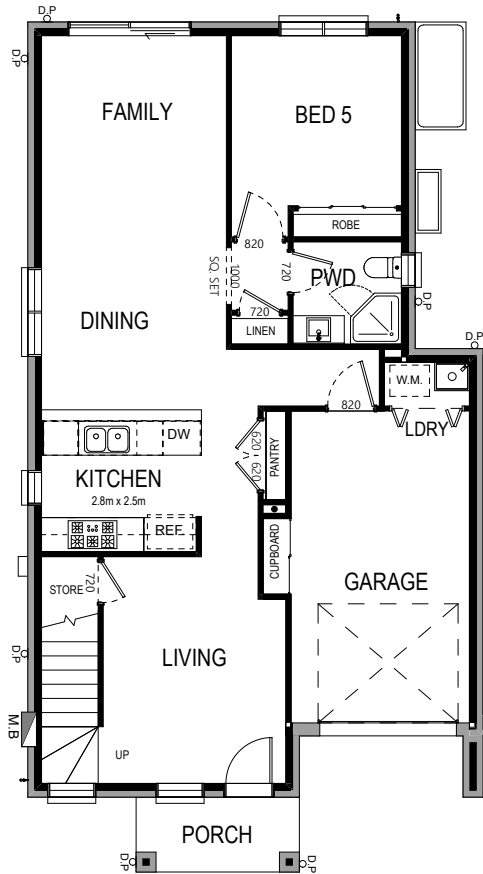
Latest in hybrid flooring (heat, stain, water & bacteria resistant).

Built-in sliding mirrored storage.

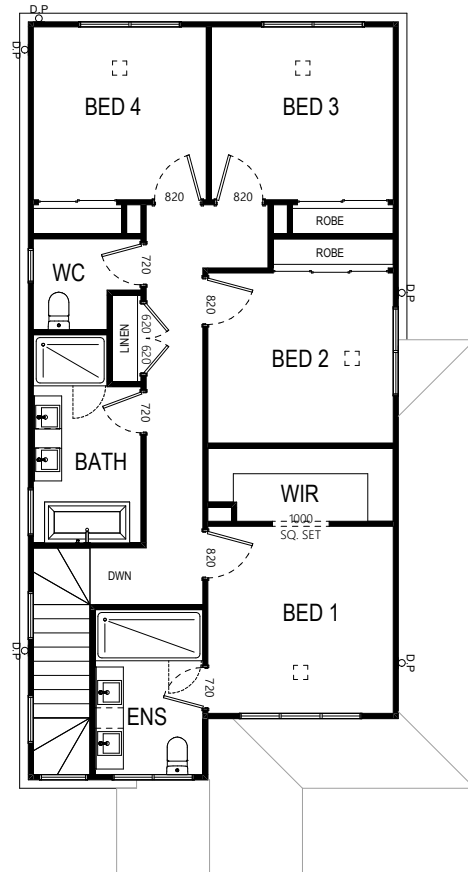
LED downlights throughout kitchen & bathroom areas.

Sectional overhead Colorbond garage door with auto opener (2 hand-held transmitters & 1 wall-mounted transmitter).

Landscaping to front and rear yards, concrete driveway, boundary fencing, letterbox and clothesline.



GROUND FLOOR



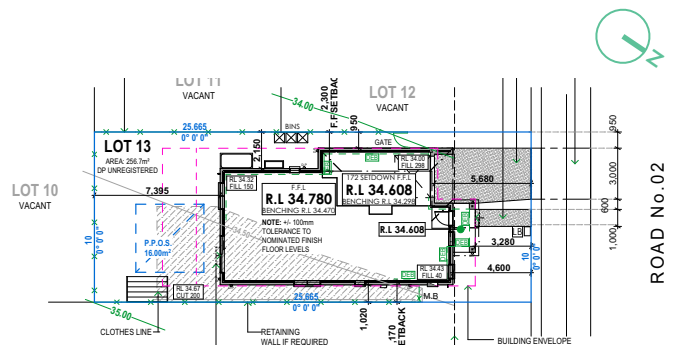
FIRST FLOOR

5 3.5 1

Land Size 256.7m<sup>2</sup>

House Size 186.84m<sup>2</sup>

Frontage 10m



SITE PLAN

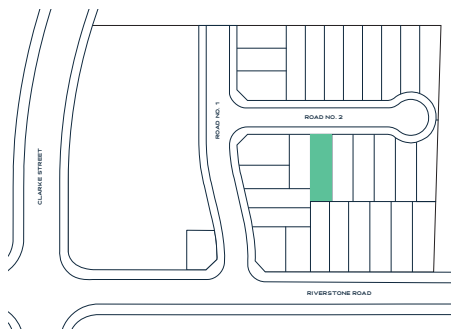


## LOT 14

Clarke St, Rouse Hill NSW 2155

Ground Floor	83.16m <sup>2</sup>
First Floor	92.09m <sup>2</sup>
Garage	33.70m <sup>2</sup>
<b>Total</b>	<b>212.68m<sup>2</sup></b>

 5
  3.5
  2



## TURNKEY INCLUSIONS

900mm gas wok cooktop with cast-iron trivets, 900mm ducted rangehood & 600mm electric oven.

20mm zero silica stone kitchen benchtops with square edging and soft close kitchen drawers & cupboards (in accordance with selected colour scheme).

Actron dual zone ducted reverse cycle heating & cooling system.

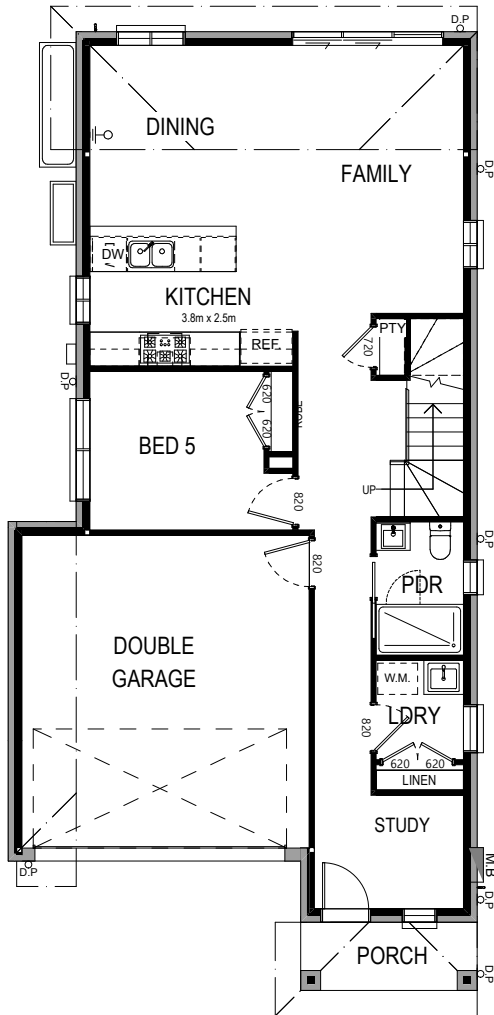
Latest in hybrid flooring (heat, stain, water & bacteria resistant).

Built-in sliding mirrored storage.

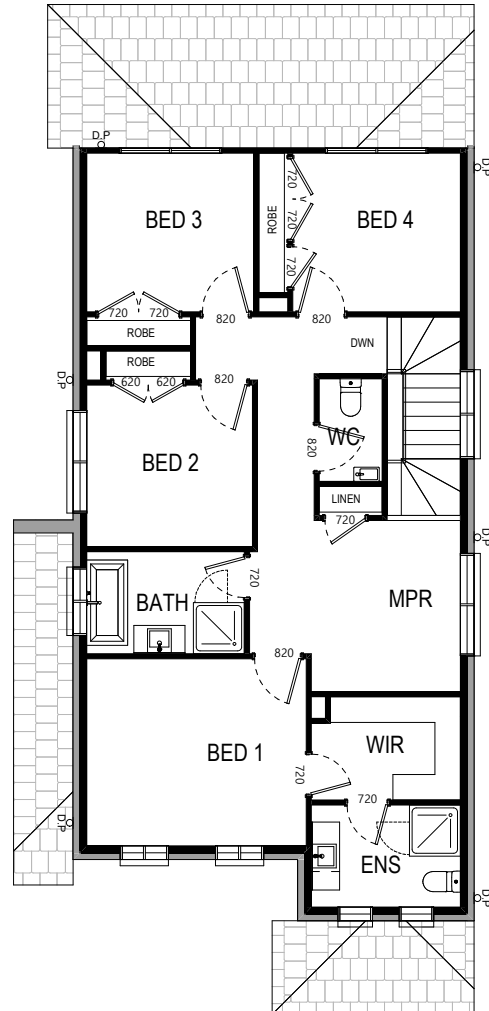
LED downlights throughout kitchen & bathroom areas.

Sectional overhead Colorbond garage door with auto opener (2 hand-held transmitters & 1 wall-mounted transmitter).

Landscaping to front and rear yards, concrete driveway, boundary fencing, letterbox and clothesline.



GROUND FLOOR



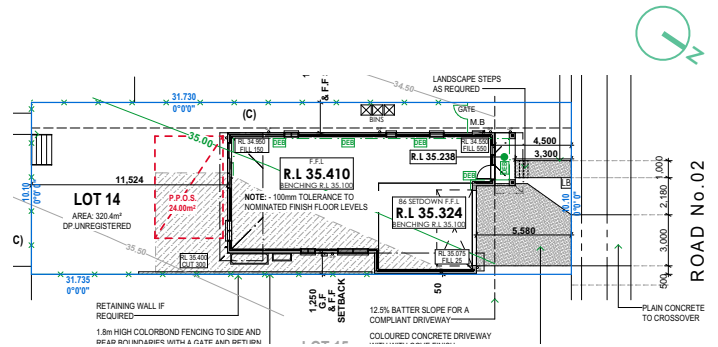
FIRST FLOOR

5 3.5 2

Land Size 320.4m<sup>2</sup>

House Size 212.68m<sup>2</sup>

Frontage 10.1m



SITE PLAN

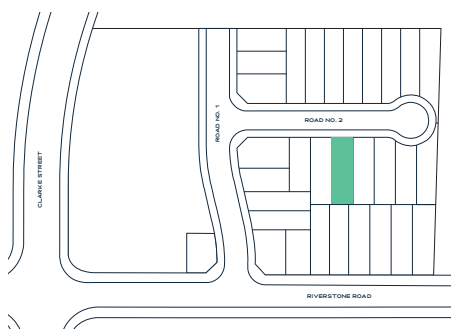


## LOT 15

Clarke St, Rouse Hill NSW 2155

Ground Floor	91.29m <sup>2</sup>
First Floor	101.90m <sup>2</sup>
Garage	19.81m <sup>2</sup>
<b>Total</b>	<b>224.55m<sup>2</sup></b>

 4
  2.5
  1



## TURNKEY INCLUSIONS

900mm gas wok cooktop with cast-iron trivets, 900mm ducted rangehood & 600mm electric oven.

20mm zero silica stone kitchen benchtops with square edging and soft close kitchen drawers & cupboards (in accordance with selected colour scheme).

Actron dual zone ducted reverse cycle heating & cooling system.

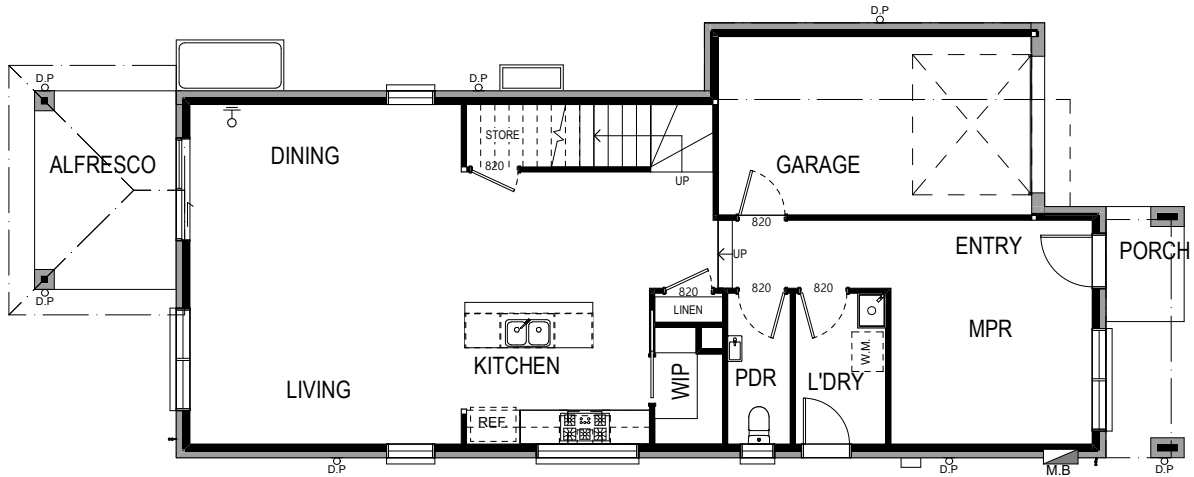
Latest in hybrid flooring (heat, stain, water & bacteria resistant).

Built-in sliding mirrored storage.

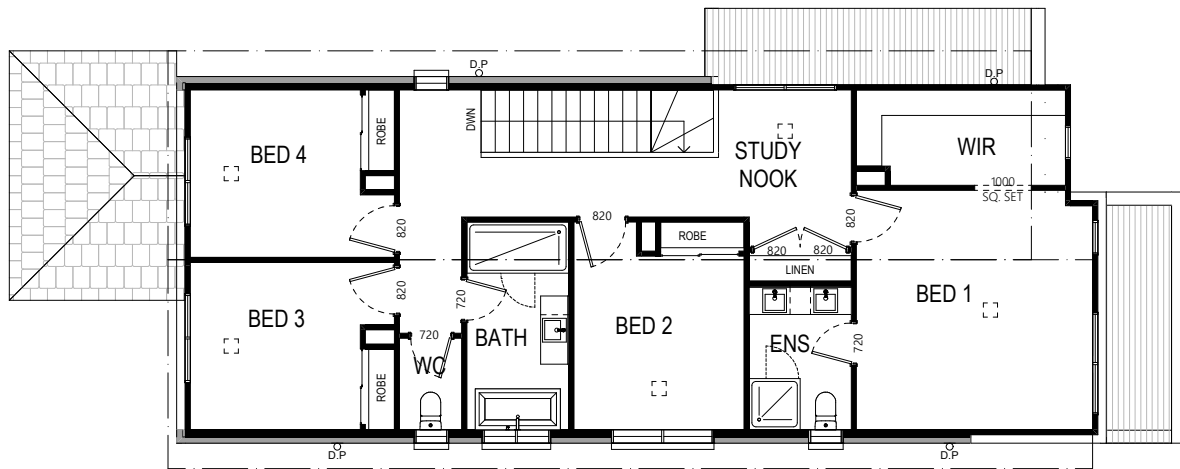
LED downlights throughout kitchen & bathroom areas.

Sectional overhead Colorbond garage door with auto opener (2 hand-held transmitters & 1 wall-mounted transmitter).

Landscaping to front and rear yards, concrete driveway, boundary fencing, letterbox and clothesline.



GROUND FLOOR



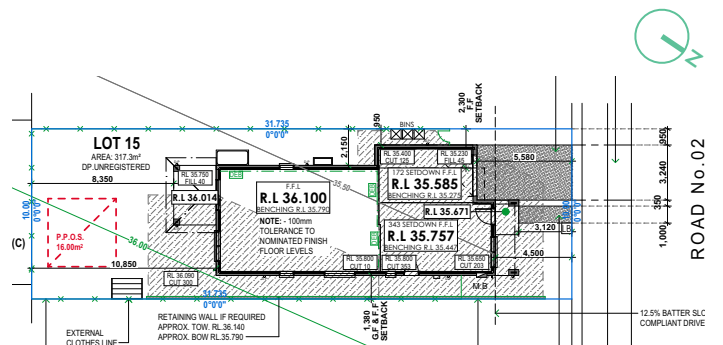
FIRST FLOOR

4 2.5 1

Land Size 317.3m<sup>2</sup>

House Size 224.55m<sup>2</sup>

Frontage 10m



SITE PLAN

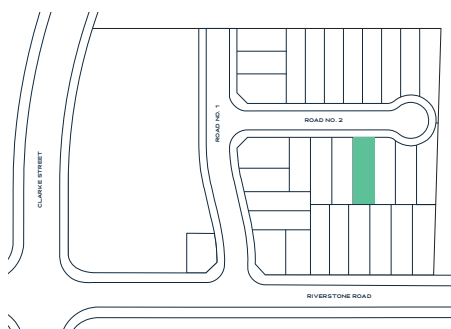


## LOT 16

Clarke St, Rouse Hill NSW 2155

Ground Floor	83.16m <sup>2</sup>
First Floor	90.63m <sup>2</sup>
Garage	33.70m <sup>2</sup>
<b>Total</b>	<b>211.22m<sup>2</sup></b>

 5
  3.5
  2



## TURNKEY INCLUSIONS

900mm gas wok cooktop with cast-iron trivets, 900mm ducted rangehood & 600mm electric oven.

20mm zero silica stone kitchen benchtops with square edging and soft close kitchen drawers & cupboards (in accordance with selected colour scheme).

Actron dual zone ducted reverse cycle heating & cooling system.

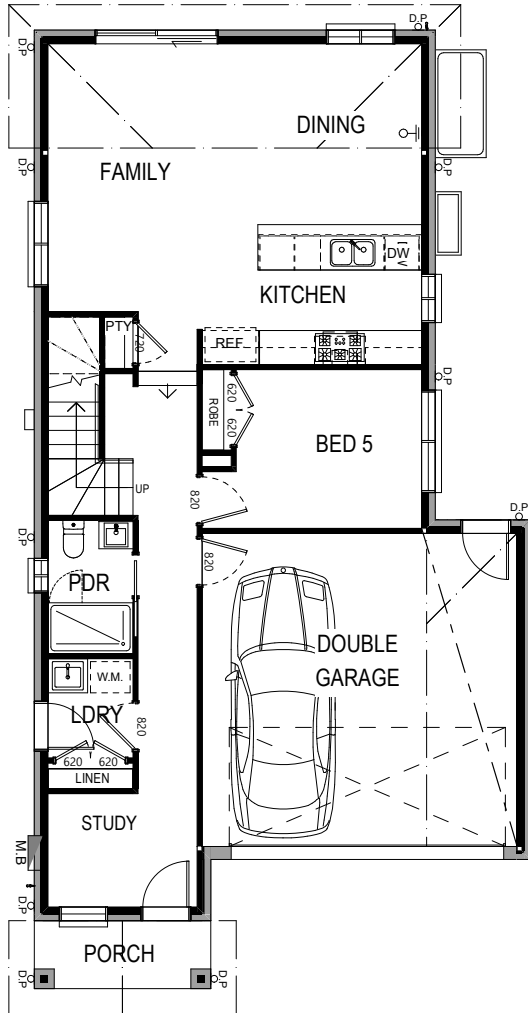
Latest in hybrid flooring (heat, stain, water & bacteria resistant).

Built-in sliding mirrored storage.

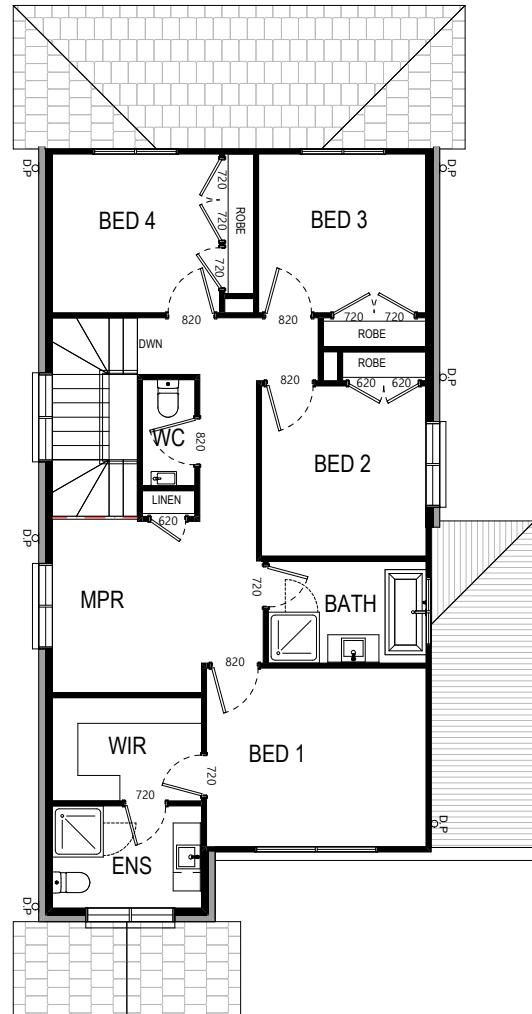
LED downlights throughout kitchen & bathroom areas.

Sectional overhead Colorbond garage door with auto opener (2 hand-held transmitters & 1 wall-mounted transmitter).

Landscaping to front and rear yards, concrete driveway, boundary fencing, letterbox and clothesline.



GROUND FLOOR



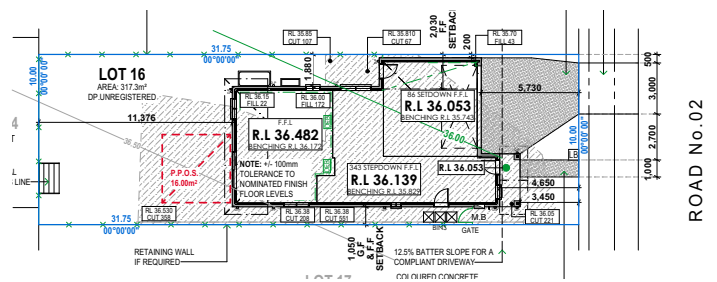
FIRST FLOOR

5 3.5 2

Land Size 317.3m<sup>2</sup>

House Size 211.22m<sup>2</sup>

Frontage 10m



SITE PLAN



## LOT 17

Clarke St, Rouse Hill NSW 2155

Ground Floor	91.29m <sup>2</sup>
First Floor	103.2m <sup>2</sup>
Garage	19.81m <sup>2</sup>
<b>Total</b>	<b>225.67m<sup>2</sup></b>



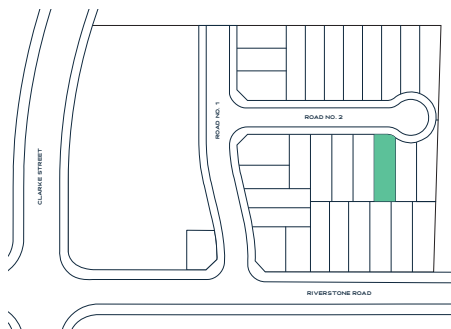
4



2.5



1



## TURNKEY INCLUSIONS

900mm gas wok cooktop with cast-iron trivets, 900mm ducted rangehood & 600mm electric oven.

20mm zero silica stone kitchen benchtops with square edging and soft close kitchen drawers & cupboards (in accordance with selected colour scheme).

Actron dual zone ducted reverse cycle heating & cooling system.

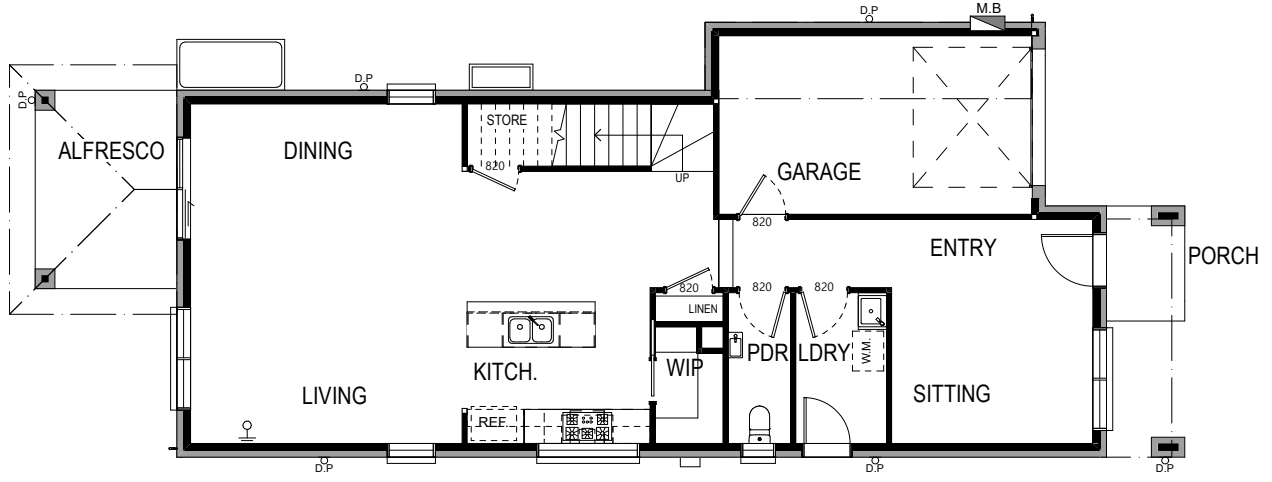
Latest in hybrid flooring (heat, stain, water & bacteria resistant).

Built-in sliding mirrored storage.

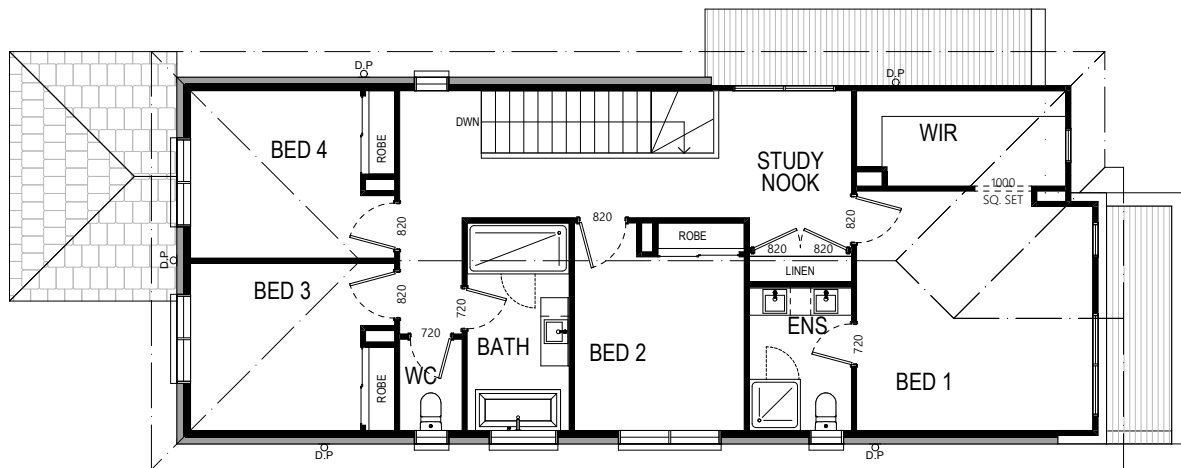
LED downlights throughout kitchen & bathroom areas.

Sectional overhead Colorbond garage door with auto opener (2 hand-held transmitters & 1 wall-mounted transmitter).

Landscaping to front and rear yards, concrete driveway, boundary fencing, letterbox and clothesline.



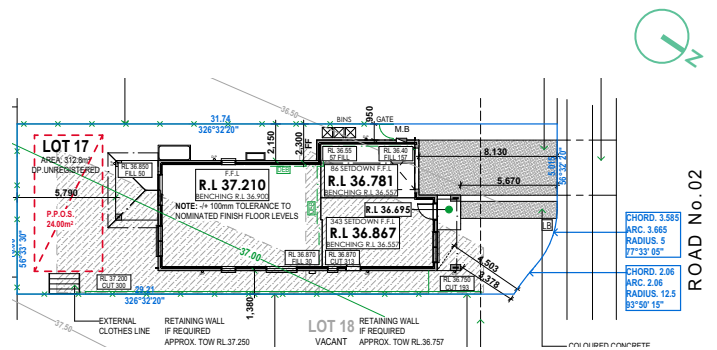
GROUND FLOOR



FIRST FLOOR

4    
 2.5    
 1

Land Size	312.8m <sup>2</sup>
House Size	225.67m <sup>2</sup>
Frontage	10m



SITE PLAN

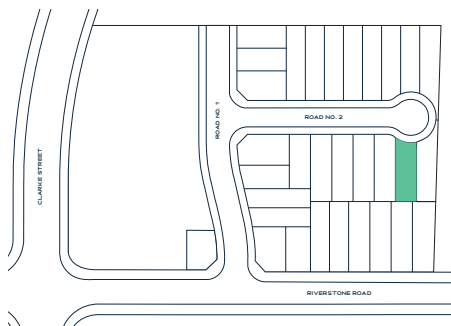


**LOT 18**

**Clarke St, Rouse Hill NSW 2155**

Ground Floor	79.20m <sup>2</sup>
First Floor	87.89m <sup>2</sup>
Garage	20.16m <sup>2</sup>
<b>Total</b>	<b>191.05m<sup>2</sup></b>

 5    
  3.5    
  1



**TURNKEY INCLUSIONS**

900mm gas wok cooktop with cast-iron trivets, 900mm ducted rangehood & 600mm electric oven.

20mm zero silica stone kitchen benchtops with square edging and soft close kitchen drawers & cupboards (in accordance with selected colour scheme).

Actron dual zone ducted reverse cycle heating & cooling system.

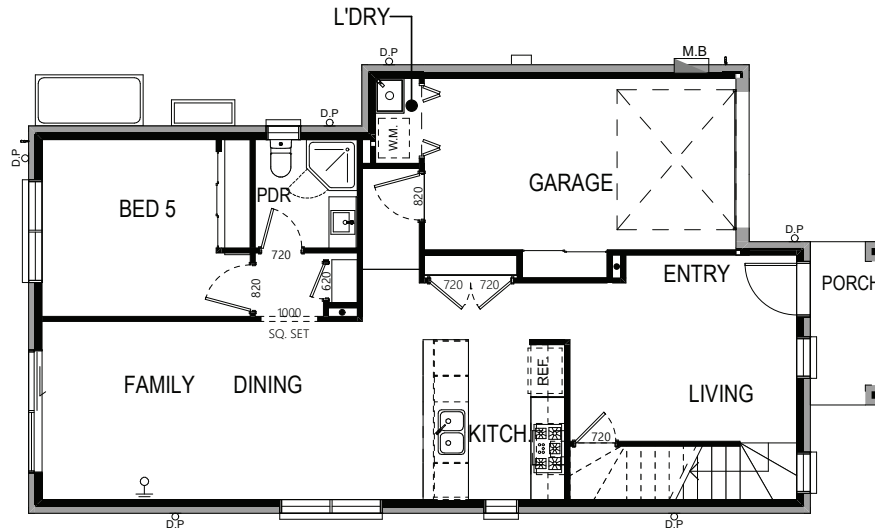
Latest in hybrid flooring (heat, stain, water & bacteria resistant).

Built-in sliding mirrored storage.

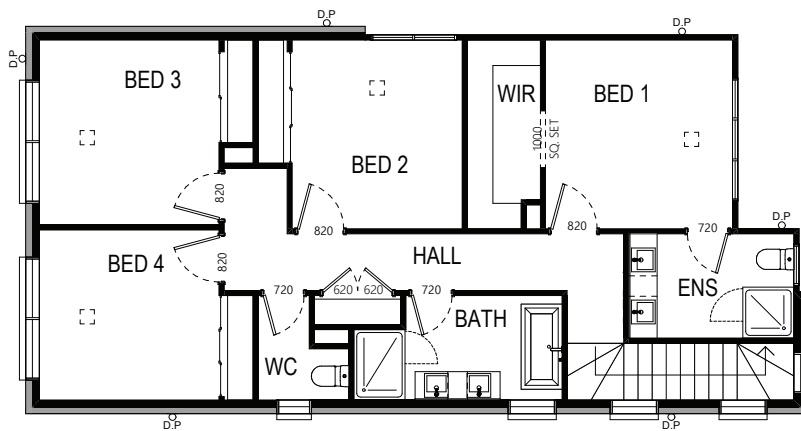
LED downlights throughout kitchen & bathroom areas.

Sectional overhead Colorbond garage door with auto opener (2 hand-held transmitters & 1 wall-mounted transmitter).

Landscaping to front and rear yards, concrete driveway, boundary fencing, letterbox and clothesline.



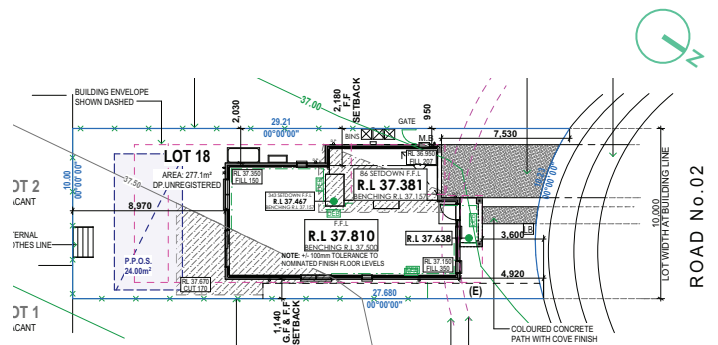
GROUND FLOOR



FIRST FLOOR

5    
 3.5    
 1

Land Size	277.1m <sup>2</sup>
House Size	191.05m <sup>2</sup>
Frontage	10m



SITE PLAN