

INNESDALE ROAD

INNESDALE ROAD

DRIVEWAY

103

104

105

111

110

109

102

108

101

106

112

107

1 BED 2 BED 3 BED

LEVEL

G

tqm GROUP

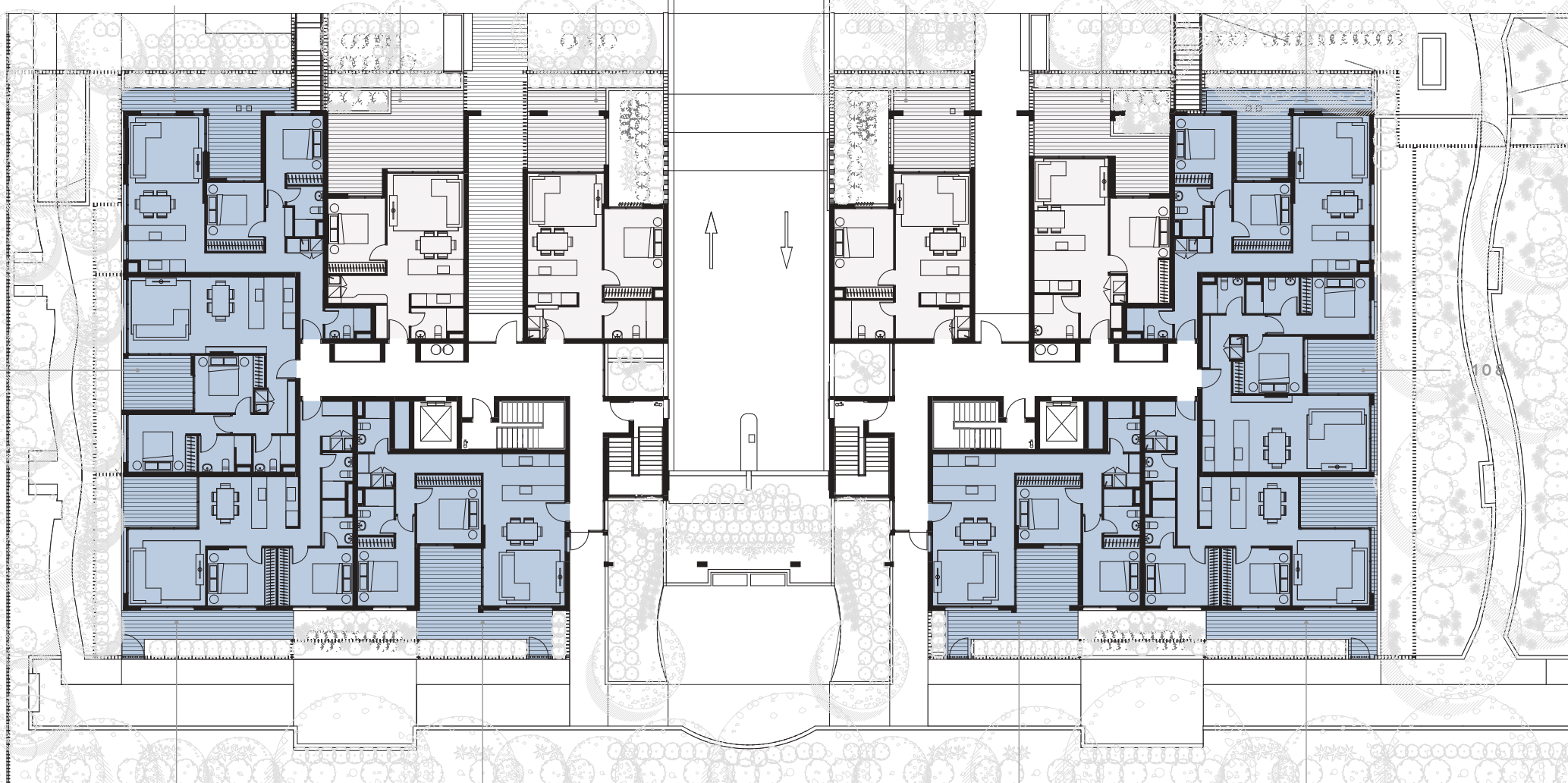
BAYOU

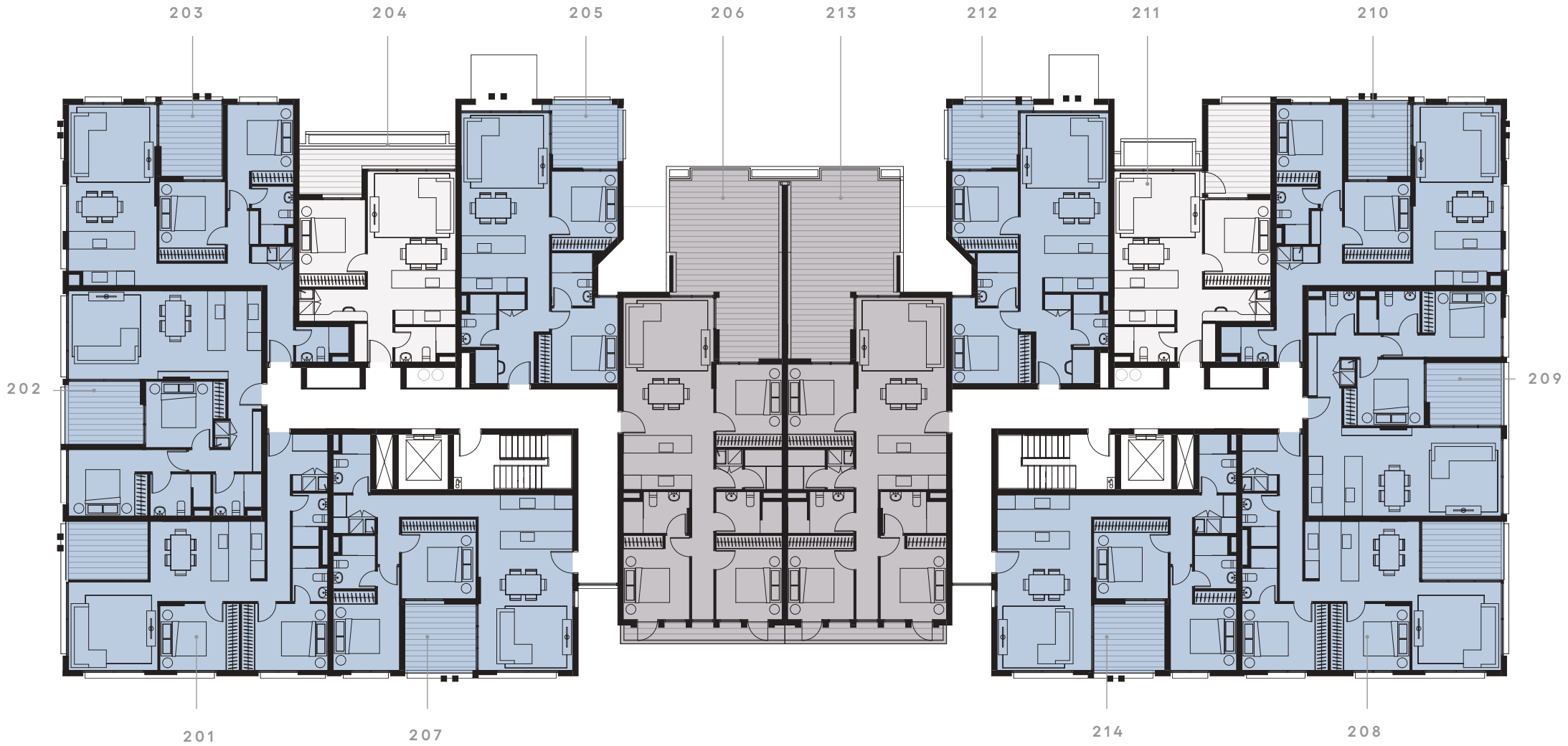
WOLLI CREEK

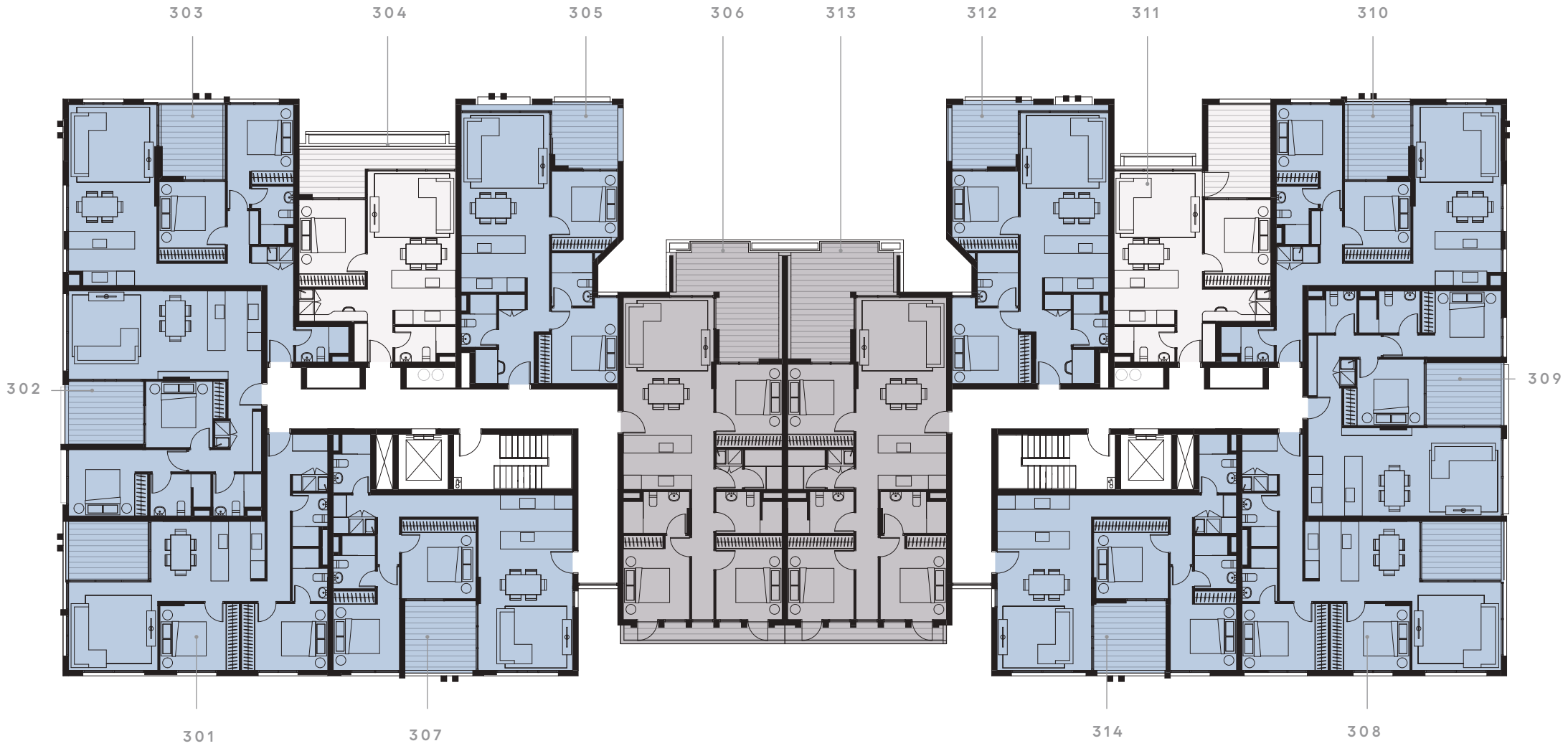
23 INNESDALE ROAD, WOLLI CREEK, 2205

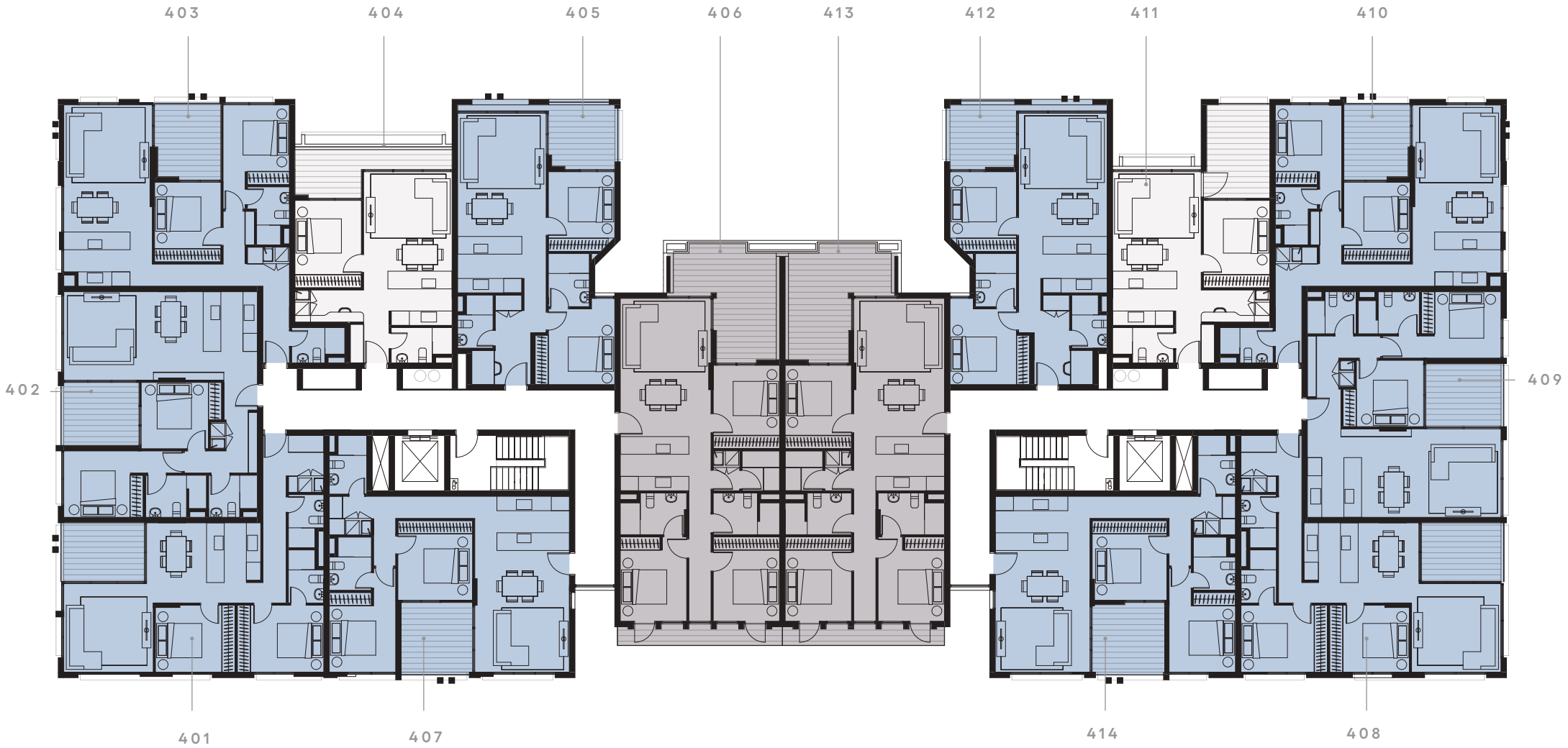


Updated September 2024 - Note: this plan is a guide only and does not constitute an offer or contract. Please note that changes may be made to the development during construction and elements such as areas, fittings, fixtures etc may change without notice. All parties should rely on their own investigation to validate this information as it is not guaranteed. No liability will be accepted for any inaccuracy or misstatement. Creative by Heard.









1 BED 2 BED 3 BED



603

604

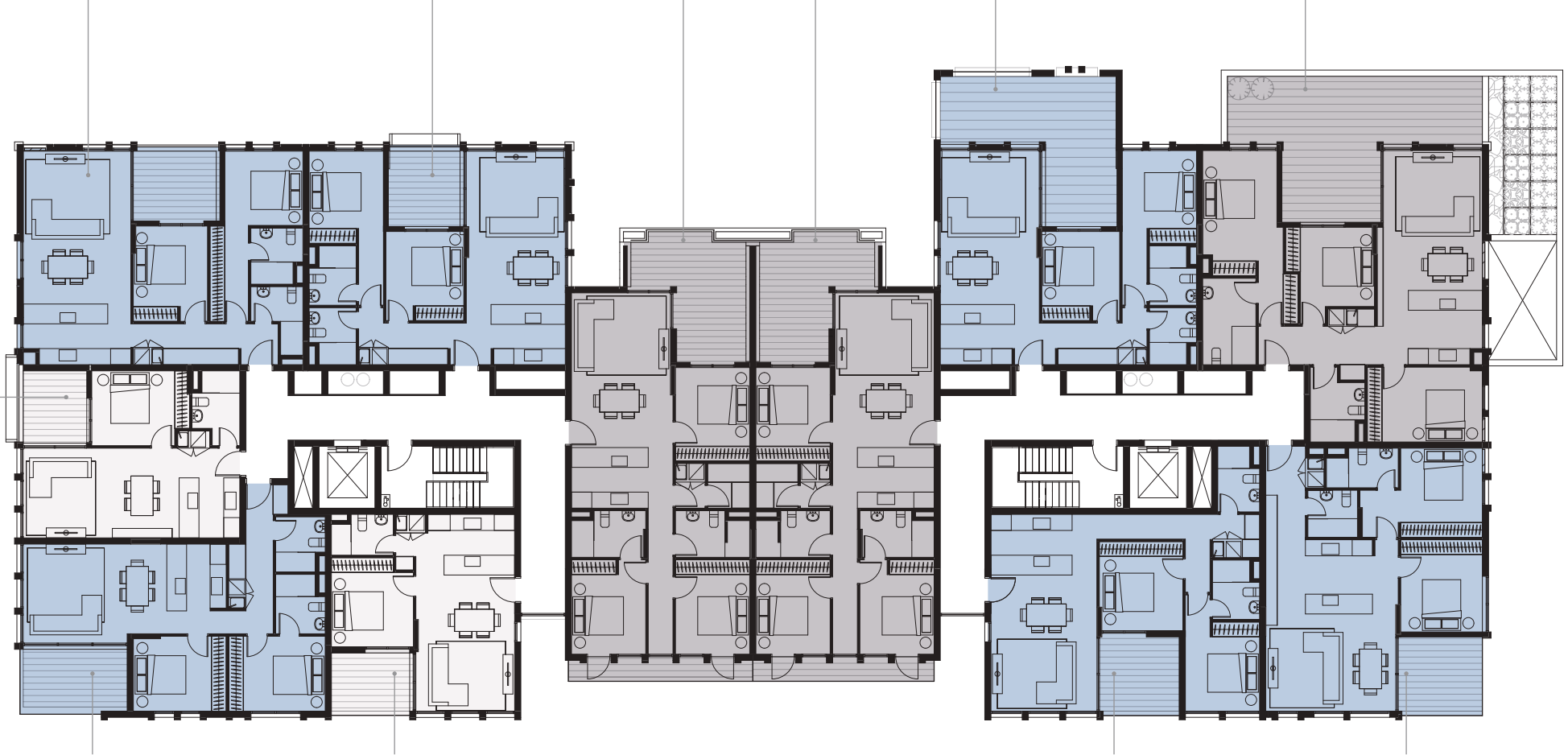
605

610

609

608

602



601

606

611

607



BAYOU

WOLLIE CREEK

1 BED
 2 BED
 3 BED

23 INNESDALE ROAD, WOLLIE CREEK, 2205



LEVEL

5



Updated September 2024 - Note: this plan is a guide only and does not constitute an offer or contract. Please note that changes may be made to the development during construction and elements such as areas, fittings, fixtures etc may change without notice. All parties should rely on their own investigation to validate this information as it is not guaranteed. No liability will be accepted for any inaccuracy or misstatement. Creative by Heard.



803

804

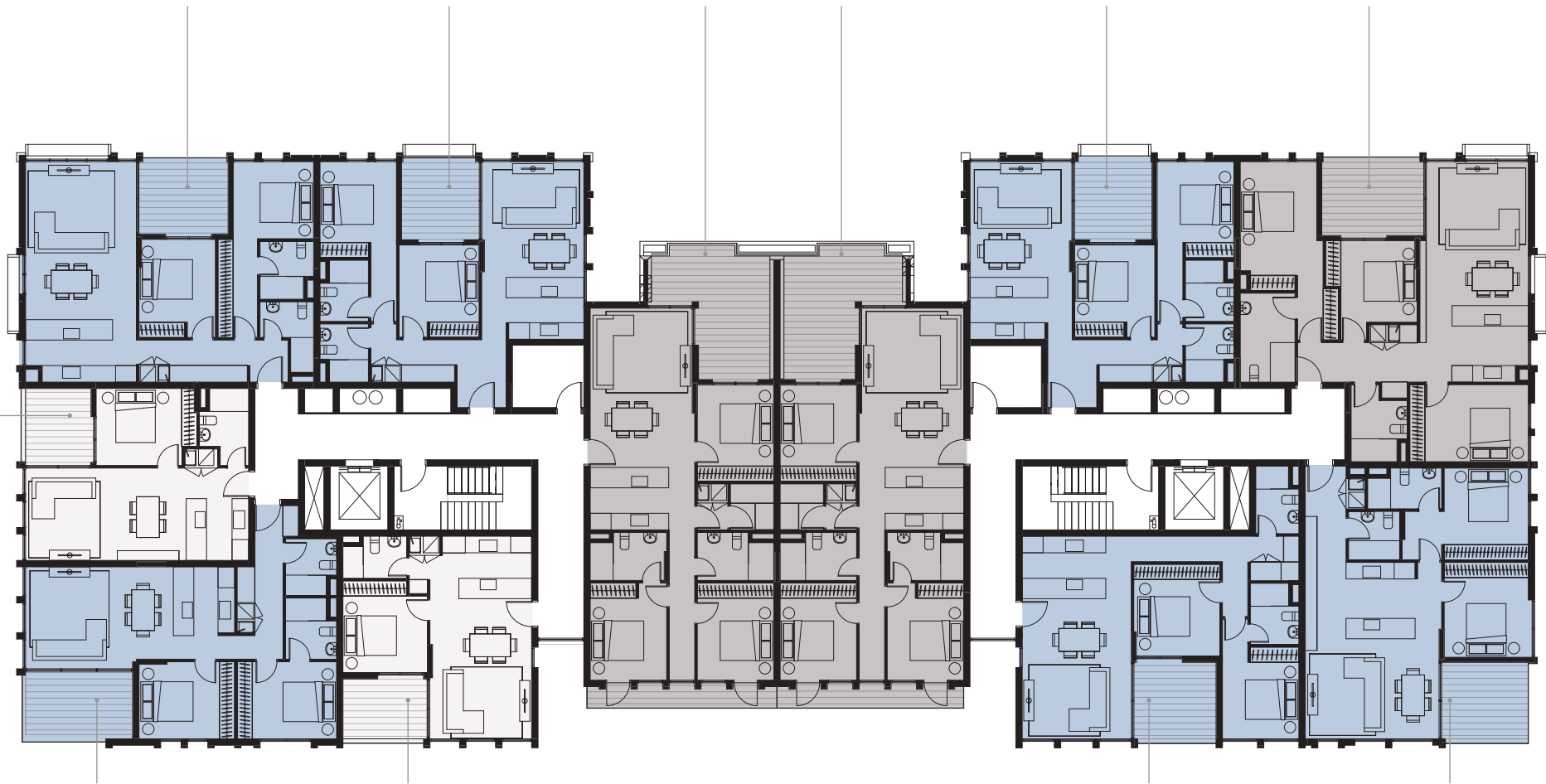
805

810

809

808

802



801

806

811

807



BAYOU

WOLLI CREEK

1 BED 2 BED 3 BED

23 INNESDALE ROAD, WOLLI CREEK, 2205

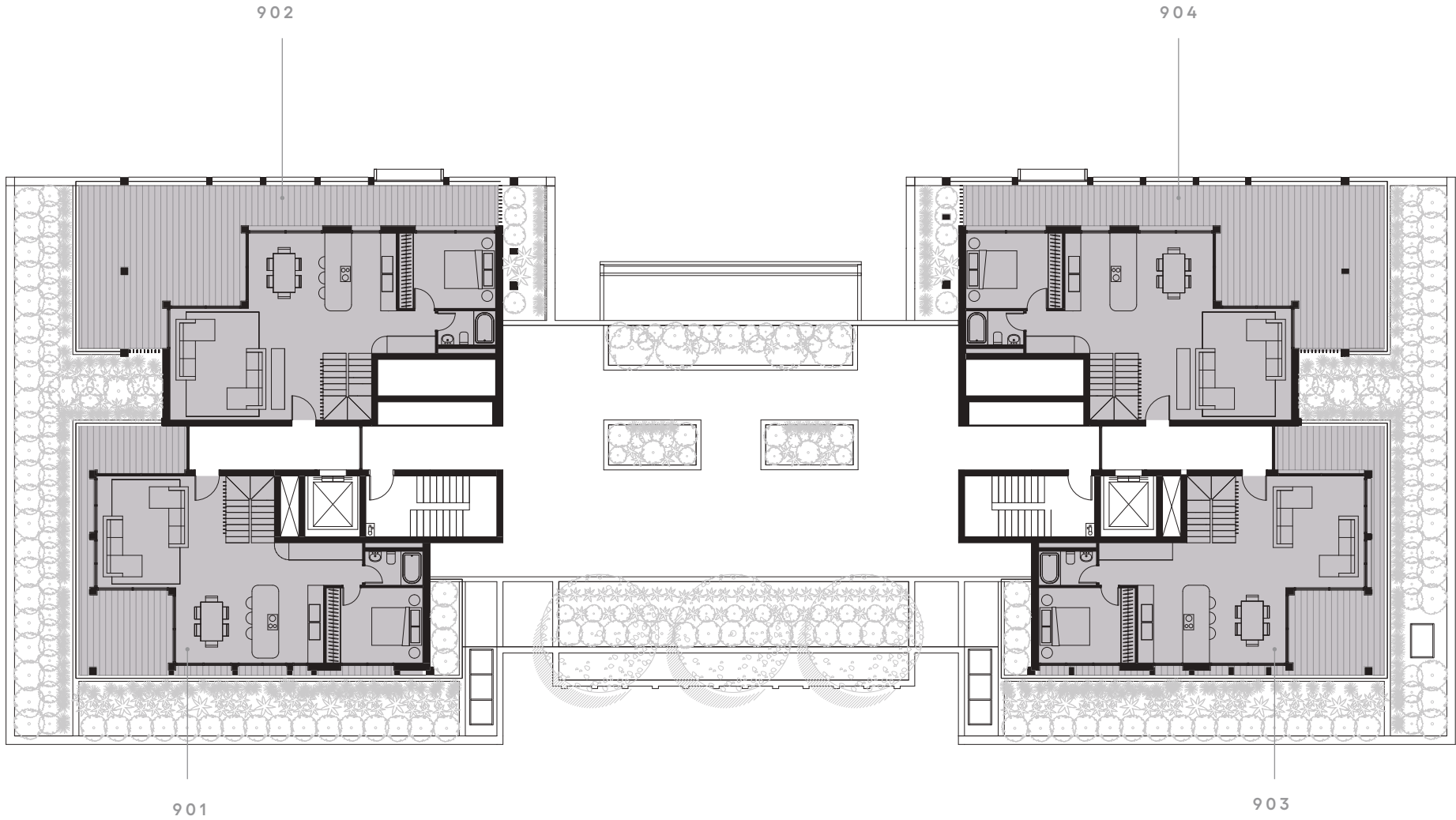


LEVEL

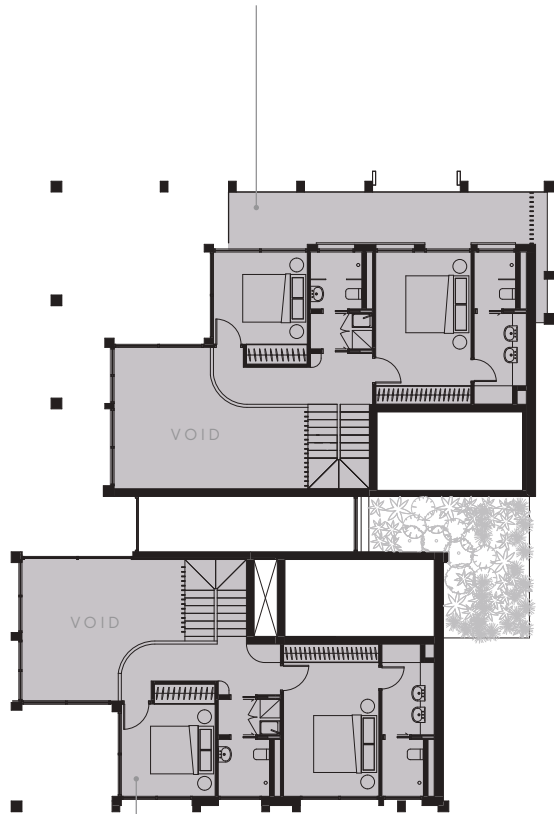
7



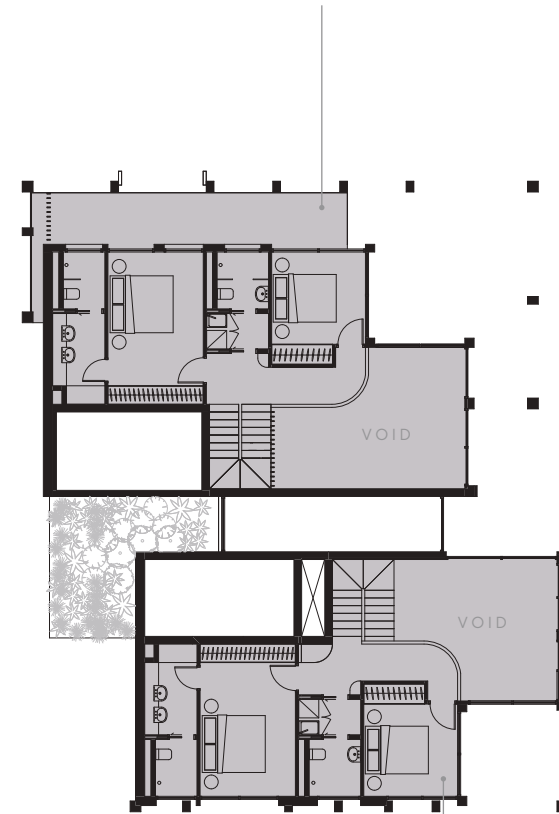
Updated September 2024 - Note: this plan is a guide only and does not constitute an offer or contract. Please note that changes may be made to the development during construction and elements such as areas, fittings, fixtures etc may change without notice. All parties should rely on their own investigation to validate this information as it is not guaranteed. No liability will be accepted for any inaccuracy or misstatement. Creative by Heard.



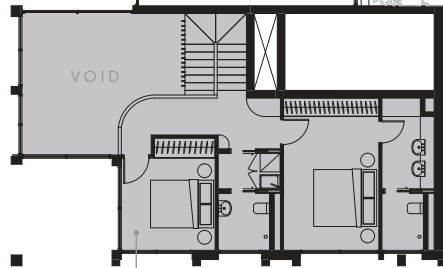
902



904



901



903

